



W I N T E R E Q U E S T R I A N F E S T I V A L

WEEKLY WIRE

WEEK 2 • JANUARY 14, 2026

**SPOTLIGHT ON: GREAT CHARITY
CHALLENGE PARTNERS**

**ACCESSORIZE YOUR RIDE WITH
CURATED FINDS**

**INTRODUCING: THE SHOW PONY
SIGNATURE COCKTAIL**



A NOTE FROM THE EDITOR

I remember my first WEF ribbon. I remember it because it was two years ago. It took me over 35 years for many reasons.

First, I probably heard the phrase Winter Equestrian Festival for the first time when I was 16. I spent my childhood at local shows on a chestnut cob my parents paid \$600 for. When the financial responsibility of horses shifted from my parents to me in my 20s, I could be found catch riding anything I could get my leg over—still a far cry from WEF.

In my late 20s, horses became my job. In my early 30s, I learned that just because you love what you do, that doesn't mean it isn't "work". There's a saying that goes: "when you do what you love, you'll never work a day in your life." The other saying you don't hear as much is: "when you do what you love, you're always working."

Today, I've learned to make time for horses—time for horses to be my passion again, not just how I pay my mortgage. Moments like the one shown in the photos on this page help me not to forget that. I challenge you to try and appreciate your upcoming WEF moments in the same exuberant way this young girl celebrated being tossed a second-place ribbon.

Other things you don't want to miss in this issue:

- Our new vendor spotlight column—it's your guide to shopping WEF.
- A closer look at Wellington International's signature cocktail: the Show Pony.
- The profile on Carmela Martin, a show jumping groom experiencing her first WEF in winning fashion.

And, hey, in between shifts in the media center and drafting my next editor's note, maybe I'll collect my second WEF ribbon soon. Here's hoping...

The Wire is produced for, about and in celebration of YOU. If you have story ideas, want to share content with us from your Wellington International experience, or would like to submit a letter to the editor—please email press@wellingtoninternational.com.

You can find The Wire distributed weekly on Thursdays throughout the showgrounds and online at WellingtonInternational.com.

All the best,
Lindsay Brock
Editor



LOW-SUGAR, VET-APPROVED HORSE TREATS YOU CAN TRUST

Finding a treat that is both delicious and nutritionally appropriate for horses can be a challenge, especially for those with metabolic concerns, insulin resistance, or weight sensitivities. Kelcie's Pumpkin Spice Horse Treats are designed to meet that need—providing a safe, tasty option that supports overall wellness.

One of the key factors that sets Kelcie's apart is its commitment to transparency. These treats have been independently sugar-tested by the Minnesota Valley Testing Laboratory, with a verified total NSC (non-structural carbohydrate) of just 8.48%. This low NSC level

makes them an excellent choice for sugar-sensitive horses, and veterinarians often recommend Kelcie's treats for horses with metabolic diseases or sugar sensitivities thanks to the Guaranteed Nutritional Analysis and third-party testing results.

Despite being low in sugar, Kelcie's Pumpkin Spice Treats are picky-eater approved. Their light, crunchy texture and natural pumpkin spice aroma make them a barn favorite, proving that healthy can still be delicious.

Beyond their low sugar content, these treats offer multiple wellness benefits. They are crafted from 100%



naturally sourced, locally grown ingredients and are naturally rich in Omega-3s and fatty acids to promote a glossy, healthy coat. The unique extrusion process gives them an airy texture that encourages chewing, helps stimulate saliva production to buffer stomach acid, and supports digestive health.

Kelcie's treats are also gut-friendly, high in fiber, and provide a steady source of "cool calories," delivering

energy without the risk of sugar spikes. Because every batch is fully extruded, moisture is reduced—keeping them fresh and preventing mold.

With their combination of low sugar, vet-recommended safety, and irresistible taste, Kelcie's Pumpkin Spice Horse Treats offer peace of mind for owners and pure enjoyment for horses.





Palm Beach Equine Clinic:

Peak Performance and Compassionate Care

For more than four decades, Palm Beach Equine Clinic (PBEC) has been at the heart of South Florida's equestrian community, providing exceptional veterinary care to horses competing at the highest levels. As the Official Veterinarians of the Winter Equestrian Festival (WEF), Global Dressage Festival, and National Polo Center, PBEC ensures every horse has access to world-class expertise — whether for routine health papers, emergency services, advanced imaging, surgery, or second opinions in collaboration with referring veterinarians. At WEF, PBEC veterinarians are on-site daily

throughout the circuit to oversee competing horses and help with any needs at their satellite location next to the Stabling Office.

COMPREHENSIVE EXPERTISE, ALL UNDER ONE ROOF

PBEC's team of more than 30 veterinarians represents one of the most comprehensive collections of equine medical knowledge in the region. Their specialties span internal medicine, emergency care, reproduction and fertility, regenerative medicine, podiatry, dentistry, and alternative therapies such as equine medical manipulation and acupuncture. This breadth of expertise allows PBEC to think outside the box

when it comes to both prevention and treatment, keeping sport horses sound and competitive.

CUTTING-EDGE IMAGING AND TECHNOLOGY

One of PBEC's standout features is its unmatched diagnostic imaging capabilities, anchored by South Florida's only Canon Aquilion LB Exceed CT scanner. Unlike traditional CT machines, this advanced system moves around the patient, elevating to scan the head and neck or lowering to image the limbs of a standing horse. This level of precision gives veterinarians crucial information to make timely, accurate diagnoses — often

guiding successful treatment or surgery.

"As the official veterinarians for WEF and GDF, we take great pride in being available 24/7 to care for any equine in the Wellington area," said PBEC President Dr. Scott Swerdlin. "The standards we set for ourselves — and the level of talent within our team — are second to none. We're proud to provide top-level care to horses and riders who come here from around the world."

TRUSTED BY HORSE OWNERS

PBEC's commitment to excellence has earned the trust of riders, trainers, and owners across disciplines. Hear from some of their clients, who share glowing testimonials about the clinic's expertise and care:

"Dr. Weston Davis and his team saved my horse's life. He is a five-star surgeon; my horse was really lucky to have Dr. Davis and is alive because of him. I will always be grateful to Palm Beach



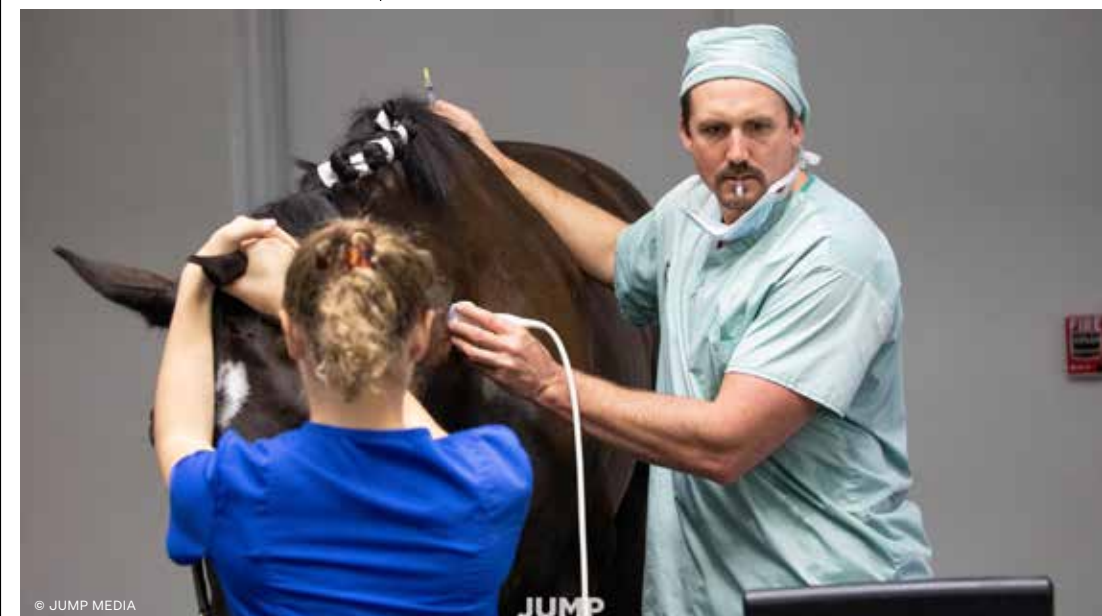
Equine Clinic and have so much gratitude toward them."

"We have had two overnight stays at Palm Beach Equine Clinic: one planned for Kissing Spine surgery and one unplanned for a major colic. The colic was due to a nephrosplenic entrapment and was resolved without surgery. Everyone from the vets, to the techs, to the office staff, was always well trained, talented, and kind to both my horse and me. Highly

recommend, over and over."

BEYOND HORSES: HELPING A SEA TURTLE IN NEED

PBEC's technology and compassion extend beyond equine athletes. When a loggerhead sea turtle named Pennywise washed ashore injured, Loggerhead Marinelife Center turned to PBEC for help. Using the CT scanner, PBEC veterinarians helped diagnose Pennywise's injuries and discovered she was carrying a clutch of eggs.



"A big thanks goes to Dr. Karen Beste at PBEC, who allowed us to come in and use their machine and help us with getting good CT scan images, because those were really important for us to get a good diagnosis and treatment plan for Pennywise," said Dr. Heather Barron, chief science officer at the center.

Dr. Beste added, "We're really lucky to have this CT scanner. It's extremely versatile. It's a very powerful machine, and it's obviously big enough to handle animals that wouldn't normally have imaging options. We're really happy to be able to help this turtle. We are available to do anything we can to help any animal in need."

A VITAL PART OF YOUR HORSE'S TEAM

Whether your horse is a seasoned grand prix champion, a young horse on the rise, or a beloved family pet, Palm Beach Equine Clinic wants to be part of your team, offering the expertise, technology, and compassionate care needed to keep horses healthy and performing at their best. Trusted by top equestrian athletes from around the world, PBEC remains the gold standard in equine veterinary medicine.

To learn more about PBEC's services, visit www.EquineClinic.com or call 561-793-1599.



GONZALO BUSCA ROCA BRINGS DOWN THE HOUSE

IN PALM BEACH COUNTY SPORTS COMMISSION
CSI3* GRAND PRIX



Spain's Gonzalo Busca Roca won his first Wellington International Saturday Night Lights in the \$140,000 Palm Beach County Sports Commission CSI3* Grand Prix during opening week of international competition at the 2026 WEF. He rode to a ceremonious victory aboard Cristiano Obolensky, a horse he has been partnered with for four years and owns together with Stud V.V. BVBA.

As part of Wellington International's all-new series of theme nights, a record

crowd for the first Saturday Night Lights turned out in hats, boots and buckles for 'Country Western Night.' They were treated to a testing track built by Nick Granat (USA) that saw nine horses advance to the jump-off despite the course's difficulty.

"Everything was delicate tonight which made it a tough course," said Busca Roca, who has only shown under the lights at Wellington International twice before. "My horse is a dream. He's a real warrior and put a lot of effort in tonight. There were

©ASHLEY NEUHOF & CASSIDY KLEIN



some very fast riders behind me, so I had to give it a try. I went as fast as I could, and it worked for me."

Busca Roca and the 11-year-old Hanoverian gelding (Cornet Obolensky x Stakkato) stopped the clock at 41.7 seconds to take over the lead from American Tanner Korotkin riding Kinmar Quality Hero, a 13-year-old Irish Sport Horse gelding by Obos Quality X Moujik De Sohan owned by Sandalwood Farms.

In a field where 14 countries were represented, fellow US rider Marilyn Little and her 11-year-old Mecklenburg mare La Contessa (License x Cornet's Prinz) matched Korotkin's time of 42.77 to end in a tie for second.

"The crowd here is pushing all the time," continued Busca Roca—based in Wellington—of the electric atmosphere under the lights of WEF. "It's a good atmosphere, very good sport and always difficult to win here.

"[Cristiano] has a lot of blood, and he gets excited after a really fast round, so he's always waiting for me to tell him what's next," continued Busca Roca of the mount he has piloted since the gelding's seven-year-old season. "He's a very special horse."

From here, Cristiano Obolensky will enjoy a few weeks of rest before taking aim at the CSI4* on the grass derby field during WEF 4.



Frank & Eileen

MADE TO LIVE IN
FRANKANDEILEEN.COM



Ringside Health

CONCIERGE MEDICINE • URGENT CARE • WELLNESS & LONGEVITY

ON-SITE AT WELLINGTON INTERNATIONAL

On-Site Medical Care

Acute injuries, sprains, illness visits & emergency coordination
X-rays, casting, laceration repair
Onsite lab testing (flu/COVID/strep), advanced diagnostics
In-house pharmacy & medication refills
Return-to-sport & FEI/USEF clearance

IV & Recovery Services

Hydration, immune & energy drips
Vitamins, recovery blends, NAD+ therapy
Injection therapy: Vit C/D, Tri-Immune, Lipo-B, Zinc, Biotin & more

Wellness & Longevity

Hormone therapy, peptide therapy
Weight loss & metabolic management
Functional and Integrative Medicine
Primary care & nationwide telemedicine

Cosmetic & Dermatology

Skin health treatments & medical-grade products
Hair growth therapies



• Located On-Site at
Wellington International
• www.RingsideHealth.com
• (561) 247-2373
• info@ringsidemds.com



INTRODUCING THE SHOW PONY

The world's most celebrated sporting events all have their defining drinks—the Mint Julep at the Kentucky Derby, the Honey Deuce at the US Open—cocktails that become part of the lore, the experience and the sense of occasion.

In 2026, WEF debuts one of its own: the Show Pony, the event's first-ever official signature cocktail, crafted exclusively in partnership with Chrome Horse Society Tequila.

Designed to embody the spirit of WEF—athleticism, sophistication and the unmistakable energy of Wellington's winter circuit—the Show Pony marks a new chapter in the event's evolution and its commitment to elevating the spectator experience across the grounds.

"WEF is more than a competition, it's a lifestyle, community and vibrant atmosphere unlike anything else in equestrian sport," said Murray Kessler, CEO of Wellington International. "The Show Pony is giving spectators and riders a

signature moment they can savor and share. It's fresh, modern and made to become a part of the excitement that brings people back to Wellington year after year."

A refreshing paloma with a signature twist, the Show Pony is crafted with Chrome Horse Society's triple-distilled tequila. Served in a limited-edition commemorative collectible cup created exclusively for the 2026 season, it's poised to become a symbol of Wellington International's winter circuit.

"WEF brings together the best riders, horses, and fans from around the world—it deserves a signature drink that reflects that level of excellence," said Jack Morgan, founder of Chrome Horse Society. "The Show Pony is bright, bold, and celebratory—a perfect match for the festival's energy."

Enjoy the Show Pony at the Central Park Bar, Modon International Club, BrainJuice Tiki Hut and the many satellite bars around the grounds.



Peptides, NAD+ and Ageless Medicine:

Supporting Health,
Beauty and Longevity



Modern wellness is no longer just about treating illness—it's about supporting how you feel, how you function and how you age. At Ringside Health, we focus on Ageless Medicine, a proactive approach that supports long-term health, performance, and beauty from the inside out. Therapies like NAD+ infusions, immune support and peptide therapy play a powerful role in helping patients look and feel their best at every stage of life.

NAD+ (nicotinamide adenine dinucleotide) is a naturally occurring molecule found in every cell of the body. It plays a key role in energy production, cellular repair and overall metabolic health. As we age—or experience high stress, travel, or physical demands—NAD+ levels naturally decline. NAD+ therapy helps support energy

levels, mental clarity, recovery and resilience. From a beauty perspective, supporting cellular repair can also contribute to healthier-looking skin, improved tone and a more refreshed appearance.

Peptide therapy is one of the most exciting tools in Ageless Medicine. Peptides are short chains of amino acids that act as messengers in the body, telling cells how to function more efficiently. Different peptides are used for different goals, including supporting muscle recovery, improving sleep, balancing hormones and reducing inflammation. Many peptides also support beauty and anti-aging goals, helping promote clearer, firmer skin, improved skin elasticity, and healthier hair and nail growth. By supporting collagen production and tissue repair, peptides help the body age

more gracefully—naturally and safely.

Immune support therapies, such as tri-immune boosts, also play an important role in overall wellness. A strong immune system supports better recovery, reduces downtime and helps the body manage stress more effectively. When the body is functioning well internally, it often shows externally through brighter skin, better energy, and overall vitality.

What truly sets Ringside Health apart is our Concierge Health Programs. These programs take a highly personalized approach to care. There is no one-size-fits-all plan. Our physicians carefully evaluate your health history, lifestyle, goals, and concerns—whether those goals are performance-based, longevity-focused, or beauty-driven. From there,

we curate a customized plan using peptides, NAD+, and other supportive therapies designed specifically for you.

Ringside Health offers these services both in-clinic and through telemedicine, making advanced Ageless Medicine accessible no matter where you are. Whether you prefer in-person care or the convenience of virtual visits, our team ensures ongoing guidance, monitoring and adjustments as your goals evolve.

Ageless Medicine is about supporting your body at a cellular level so you can feel strong, confident, and vibrant—today and for years to come. At Ringside Health, our personalized, concierge-based approach ensures your wellness and beauty goals are supported every step of the way.



2026 WEF VENDORS

INTERNATIONAL CLUB

Lugano
Stefano Ricci
Ritz Carlton Residences,
West Palm Beach
Sean Rush
Wellington Lifestyle Partners
Human Touch

TIKI TERRACE

French Boutique (WEF P-2)
Flor de Campo (WEF 3-4)
Irene Neuwirth (WEF 5-6)
Zoe (WEF 7-11)
SR Blackinton (WEF 12)
WEF Store
Hermès
DandyLion
Karina Brez Jewelry
Serenella

BRIDGE DECK AT TIKI TERRACE

DADA Sport
Coastal Steel Structures (WEF 5-7)
US Equestrian Store (WEF 12)
Cara VL (WEF P-1)
Horsehair Jewellery (WEF 3-4)
Hangai Mountain Textiles (WEF 5-7)
The Calvert Collection (WEF 8-12)
Weatherly Stroh Studio (WEF 8-11)

HUNTER HILL

LeMieux
Gladiator Equine
Lash LaRue
VMJ for Horses (WEF P-10)
Coastal Steel Structures (WEF 11-12)

INTERNATIONAL RING WARM UP

Prestige Italia
Horcery
Bruno Delgrange Maître Sellier
Barnwalkers
IDA Development

RING 6

Antarès Sellier
Voltaire Design
Theault

FOOD VENDOR

RING 9

Arion Sellier
Forestier Sellier
Sportfot
Graceful Oaks
Nathalie's Café

RING 10

Ringside Health
McGuinn Farms
Magdalena's Mexican

VENDOR VILLAGE SOUTHSIDE

Danny & Ron's Dog Rescue
Equestrian Team Apparel
Optic Nirvana
Fab Finds by Sarah
JODS
Sofie's Boutique
Best Buds Florist
Odette Boutique (WEF P-4)
Respoke (WEF 5-8)
Flor de Campo (WEF 9-10)
Renrod Equestrian (WEF 11-12)

VENDOR VILLAGE NORTHSIDE

Loopy's Crepes
The In Gate
Ride EquiSafe
Miki Saddlery
Parlanti
Equ Lifestyle Boutique
EQUIS
Vogel NYC
Kelly's Lemonade

PONY ISLAND

Farm Stand
Hunters Landing
Silva's Tacos
Florida Snow
Best Pizza Heaven
Palm Beach
International Academy
House Call The App (WEF 1-2)
Fashion Farm Girl (WEF 3, 4, 6, 10, 11 & 12)

OASIS

Charles Ancona
La Enovesé Designs
Erica Wilson (WEF P-4)
J Wilder Imports (WEF 5-6)
Odette Boutique (WEF 7-8, WEF 11-12)
Ryde Equestrian (WEF 9-10)
Devoucoux
70 Degrees
CWD Sellier
Paulina Velez Designs
The Oasis Café

TRAILER ROW

Stephex
Tony Hanley Horse Supplements
Kelly Kocher Tack
Running Fox
Turner & Co.
Personalized Products
CM Hadfield's
Equine Tack & Nutritionals
Equiline
Tack N' Rider
Toasties Gourmet

THE BARNs

Paddock Paws Veterinary
Dandy Products
FarmVet
Josey's Laundry
Anonymous Coffee

SOUTH BARNs

Rider's Boutique
Zest
Blue Ribbon Carts
Tampico Hermoso



AROUND THE GROUNDS

From the Wellington International Photography Collective



PHOTOS © ASHLEY NEUHOF, BRIDGETTE NESS, ELEGANT EQUUS, CHELSEA LOTHROP, GIANA TERRANOVA, KAITLYN MILLER, KIND MEDIA, UNBRIDLED MEDIA, SIERRA BUERKLEY



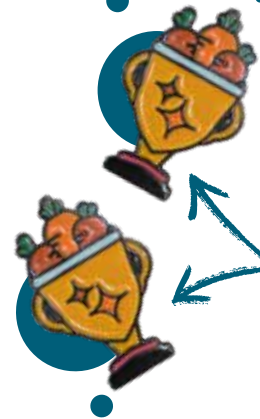
AROUND THE GROUNDS

From the Wellington International Photography Collective





Accessorize your ride with curated finds



**Pin Snickety
Trophy Pin**
Shop them at The In
Gate in Vendor Village



Rancher Hat
in Wild Wild West
Shop it at Fab Finds
By Sarah in Vendor
Village



Crossbody Bag
Shop it at Wellington
International Shop at
Bridge Deck Shops



Fluff Monkey
in the color Poppies
Shop them at
Equestrian Team Apparel
in Vendor Village



Fringe Boot Bag
Shop it at Odette in
Vendor Village.



**Beaded Dog Mom
Tote Bag**
Shop it at Fab Finds By
Sarah in Vendor Village



**Thom Browne
Horse Charm**
Shop it at Serenella
at Tiki Terrace



**Eye-Catching
Emerald Neck
Party Collection**
Shop it at La Envosé
Designs in Vendor Village



Wellington Regional
Medical Center

is presenting

Lunch & Learn

Topic: Vaccines: Myths and Facts
Presented by Dr. Larry Bush

When: January 16th 10:30AM-2:00PM, The Wellington Club at Wellington International

Complimentary lunch and drink provided!

All exhibitors and spectators welcome. Free event. Address: 3400 Equestrian Club Dr., Wellington, FL

LEAVE YOUR COMPETITION IN THE DUST

From essential health supplies to products that
power performance, FarmVet supports horses and
riders from the schooling ring to the show ring.

Visit us on showgrounds across
from Permanent Barn 4 or at our
Wellington Store & Pharmacy in
the Commerce Business Park.

FarmVet
WE ARE HORSE HEALTH



FARMVET.COM | 888.837.3626 Prescriptions · Supplements · Supplies · Compounds

DELIVERIES ON SHOWGROUNDS & AROUND WELLINGTON

Carmela Martini Stars

IN SATURDAY NIGHT LIGHTS

Contributed by Sarah Eakin/Paper Horse Media
in collaboration with HorseGrooms

When Carmela Martini arrived from Argentina two weeks ago, she was fulfilling a dream to see the Winter Equestrian Festival—she was not expecting to be starring in it as the winning groom of Saturday Night Lights. When Gonzalo Busca Roca and her charge Cristiano Obolensky won the Palm Beach County Sports Commission CSI3* Grand Prix, Martini was honored with the Double H Farm Grooms Award by sponsor Cayce Harrison. “It was always my dream to come here to Wellington,” said the 22-year-old, who grew up riding and competing as a show jumper. “And to get to know this world, to understand how everything works here, the horses, the training, the routines. I couldn’t wait to be able to watch how top riders train their horses, how they take care of them.”

Martini is a year away from graduating from medical school at the University of Cordoba. This winter, however, she is on a hiatus, grooming for the first time at the top level of the profession. Having ridden since she was three, she has all the expertise needed, gleaned also from having her own two horses. One she has had for six years and is competing at 1.40m, and the other a young horse that she bought just one month before leaving for the States and is training herself.

Martini was told about the job with the leading Spanish rider by one of her many friends in the horse world. While she knew how to look after horses, she found some differences in the way things are done at the top level in Wellington. “The routine is stricter,” she said. “Feeding horses at 7am and then again at exactly 12pm,



©ASHLEY NEUHOF & CASSIDY KLEIN



for example. We care for our horses just as much in Argentina, but we don’t have everything strictly planned out this way.” Martini and her fellow grooms look after five horses for Busco Roca, Cristian Obolensky aka ‘Cris’ being one of them. According to Martini, Cris is quiet at home, but Saturday Night Lights brought out a whole new personality. “He transforms into another horse when he’s competing,” she said. “He’s the one that the kids can be around at the barn. But he has a lot of blood and the other night we met a new Cristiano.”

Going to bed at midnight on Saturday and getting up at 6am to go back to the show on Sunday did not

phase Martini. “I am enjoying being here so much,” she said. Saturday Night Lights also brought unexpected bonuses. “It was very nice to get a check,” Martini said of the \$500 Double H Grooms award. The atmosphere of the packed International Arena was more familiar. “People in Argentina love, like here, to shout and have fun.”

“I came here for the experience, and I’m getting more than I ever imagined,” concluded Martini. “I want to thank Gonzalo, Charlie [Gordon] and the whole team for that.”

About HorseGrooms

HorseGrooms is a global platform dedicated to supporting, educating, and connecting grooms across all disciplines of equestrian sport. Through educational resources, interviews, in-person events, and an international online community, HorseGrooms works to improve horse welfare while giving grooms the recognition, tools, and support they deserve.

HorseGrooms collaborates with events, brands, and professionals worldwide to share practical knowledge and real stories from the people who care for horses every day, from local barns to top-level competition venues.

Learn more at www.horsegrooms.com



CHAMPIONS GALLERY



Virtue, ridden by Christopher Payne to champion of the Antares Sellier France 3'3" Green Hunter division and owned by Lulav Group LTD, was named the Champion Equine Insurance Hunter Style Award winner for WEF 1, presented by Laura Fetterman.



CHAMPIONS GALLERY



Toulouse VH Beekhof Z, ridden by Alissa Kinsey and owned by Sabrina Lefebvre, earned the Champion Equine Insurance Jumper Style Award presented by Laura Fetterman after winning the \$10,000 CMJ Sporthorse NAL/WIHS 1.15m Amateur Jumper Classic 36+.

\$25,000 LEADING INTERNATIONAL RIDER BONUS STANDINGS

PRESENTED BY MICHAEL SMITH

1	GONZALO BUSCA ROCA ESP	\$42,000
2	MARILYN LITTLE USA	\$27,700
3	TANNER KOROTKIN USA	\$24,500
4	NINA MALLEVAEY FRA	\$16,600
5	MIMI GOCHMAN USA	\$14,000

Gonzalo Busca Roca and Cristiano Obolensky after winning the \$140,000 Palm Beach County Sports Commission CSI3* Grand Prix.

LEADING LADY RIDER AWARD STANDINGS

PRESENTED BY MARTHA W. JOLICOEUR, DOUGLAS ELLIMAN

1	MARILYN LITTLE	123 PTS
2	NINA MALLEVAEY	119 PTS
3	NATALIE DEAN	103 PTS
4	LAURA KRAUT	94 PTS
5	MIMI GOCHMAN	90 PTS

HERMÈS 1.50M CHAMPIONSHIP JUMPER SERIES

1	LILLIE KEENAN USA	50 PTS
2	PABLO MEJIA VILLA COL	42 PTS
3	MCKAYLA LANGMEIER USA	29 PTS
4	CIAN O'CONNOR IRL	28 PTS
5	MCLAIN WARD USA	27 PTS



USA's Lillie Keenan topped week 2 of the Hermès 1.50m Championship Jumper Series riding her own 9-year-old Chagrin D'Amour.

DON LITTLE MASTERS STANDINGS

PRESENTED BY RUSHY MARSH FARM

1	KAREN ARRIGONI & AGR COLOMBIA	28 PTS
2	PATRICIA HURTER & HEART 2 HEART	27 PTS
3	CAMILLE PACHECO CESARSKI & FLINT T.S. ET	21 PTS
4	ELIZABETH MALONEY & CLEMENTINE	20 PTS
5	ELIZABETH MALONEY & DISCOVERY 63	19 PTS



Karen Arrigoni and AGR Colombia were reserve champions during the WEF 1 offering of the Rushy Marsh Farm Don Little Masters and took over the lead in the overall season standings.



After finishing second in the \$140,000 Palm Beach County Sports Commission CSI3* Grand Prix, Marilyn Little is presented with the Martha Jolicoeur, Douglas Elliman Leading Lady Rider



Spotlight On:

Great Charity Challenge Partners

The Golden Girls

POSTAGE STAMP FARM FOUNDATION

What was started in New York to support local art and education programs has since transformed into supporting Florida's budding local community. The Postage Stamp Farm Foundation, founded by Annabelle Garret, not only supports Florida's community and non-profits but encourages young riders to connect with the root purpose of the Great Charity Challenge.

The Postage Stamp Farm Foundation works to find and support organizations that align with their values, from supporting equine rescues, therapeutic riding centers, to education and art programs. Aside from their community involvement, they are actively shining a light on the importance of the equestrian sport making a positive impact within their own communities.

Originating from a family that highlighted the importance of philanthropic



"The Golden Girls" / AKA Postage Stamp Farm Foundation riders David O'Brien, Lillian O'Brien and Stephanie Garrett with members of Nat King Cole Generation Hope, Inc.

involvement, the Postage Stamp Farm Foundation joined the Great Charity Challenge to help support its mission and teach the future generation of equestrian sport the importance of giving back.

Engaging directly with nonprofits, learning their story, getting out there to help young riders become more emotionally involved with their sponsored nonprofit, is what the

Postage Stamp Farm Foundation focuses on each year during GCC.

In 2025, the beloved Pet Parade and Costume Contest, presented by the Postage Stamp Farm Foundation, raised an additional \$56,000, celebrating creativity and compassion across all ages. This year, Postage Stamp Farm Foundation will hope to repeat their 2024 GCC victory, which helped raise

\$100,000 for Nat King Cole Generation Hope Inc., a nonprofit organization that provides music education for children with the greatest need by cultivating opportunities and funding programs for instruction, mentoring and resources.

(CONTINUED ON PAGE 22)



GREAT CHARITY CHALLENGE
SPONSORED BY FIDELITY INVESTMENTS®

JOIN US FOR THE 17TH ANNUAL GREAT CHARITY CHALLENGE

Saturday, January 31, 2026
At Wellington International

Gates Open at 6PM
Free General Admission



WWW.WELLINGTONINTERNATIONAL.COM/GREAT-CHARITY-CHALLENGE/



Nine-year-old Azalia Lavinge in action at WEF.

AZLIV STABLES

From love at first sight, horses have brought a mother and daughter duo closer together than ever imagined. Azliv Stables, founded by Joelle Lavinge, was created to support the endeavors of young rider Azalia Lavinge and has since become the home to many other young riders with aspirations of achieving excellence.

Based in Boisbriand, QC, Azliv Stables fills the gap between traditional riding schools and rigorous show barns, giving children a place to be children while learning perseverance, discipline, and sportsmanship. "In Europe,

kids are jumping anywhere from 1.10m to 1.20m and I thought that was lacking here in North America. So, I wanted to create an upscale European pony club." Joelle explains as her reasoning for founding Azliv.

At only nine years old, Azalia is the youngest participant to join the Great Charity Challenge and she proves that age is just a number. Training with Daniel Geaney in Ireland during the summer, Azalia added the Great Charity Challenge to her vision board many months. For her, this the Olympic Games.

Azliv Stables has blossomed into a platform for giving back to the community. From becoming a JustWorld

International ambassador at seven years old to volunteering and giving back to those around her, Azalia and Azliv Stables embody a goal bigger than the equestrian sport itself by fostering horsemanship centered around giving.

When asked what it means to be partnered with GCC as the youngest participant, Joelle, joke, "For me, it's a heart attack, but it's her reality and dream."

When it comes to this year's costume theme of "Rhyme Without Reason," Azliv Stables is not going unnoticed. By tapping designers from Cirque du Soleil, they are bound to make an impression in the ring. Azalia gave us three

hints to their costumes this year: Turn off the lights, lives underwater, and firecracker. Any guesses?

Now entering its 17th year, the Great Charity Challenge is a high-energy event that has become a celebrated tradition that blends world-class equestrian sport with purposeful giving. Thanks to the incredible generosity of sponsors, donors and participants, the GCC has distributed an impressive \$24 million to 370 local nonprofit organizations. These funds directly benefit individuals and families in need throughout Palm Beach County.



WINTER EQUESTRIAN FESTIVAL
SPORT HORSE AUCTION

featuring **VDL Stud**

// AUCTION

Thursday
February 26, 2026

Auction of talented 5, 6, 7, and 8-year-old showjumpers during WEF week 8

// PRESENTATION

Tuesday
February 17, 2026

LIVE, PHONE & ONLINE BIDDING!

www.wefsporthorseauction.com



EXPERIENCE

Saturday Night Lights

JAN. 03	\$75,000 Battle of the Sexes presented by LeMieux	FEB. 21	\$500,000 Modan CSI5* Grand Prix
JAN. 10	Country Western Night \$140,000 Palm Beach County Sports Commission CSI3* Grand Prix	FEB. 28	\$150,000 Nations Cup CSIO4* presented by Florida Coast Equipment
JAN. 17	Family Night \$50,000 Palm Beach Equine Clinic Grand Prix	MAR. 07	\$500,000 Bainbridge Companies CSI5* Grand Prix
JAN. 24	Military & First Responder Appreciation Night Presented by Wellington Regional Medical Center \$215,000 NetJets CSI4* Grand Prix	MAR. 14	ABBA Night \$215,000 Horshware Ireland CSI4* Grand Prix
JAN. 31	Great Charity Challenge Sponsored by Fidelity Investments*	MAR. 21	Fan Appreciation Night Presented by Palm Beach County Sports Commission \$150,000 Hermès 150m Championship Series Jumper Final
FEB. 07	\$500,000 Fidelity Investments* CSI5* Grand Prix	MAR. 28	\$1,000,000 Rolex US Equestrian Open CSI5* Grand Prix, a Rolex Series Event
FEB. 14	\$150,000 Peter Wetherill WCHR/USHJA Hunter Spectacular		

FREE GENERAL ADMISSION
Enjoy kids activities, shopping, music, food and more!

Gates open at 6 PM, competition starts at 7 PM.*

Parking is \$25 per vehicle at Wellington International.

Free parking is available at Equestrian Village, 13500 South Shore Blvd., Wellington, FL 33414

*Competition times may vary, please visit www.WellingtonInternational.com for more event information.



GOLD
COAST
FEED

When Speed Counts

Offering daily deliveries to Wellington International horse shows and local Palm Beach County farms.

Call to schedule your order today
561.793.4607

or order online at
goldcoastfeed.com



**Wellington
International
Shop**

BORN IN THE ARENA.

**SORRY.
CAN'T.
HORSES.
BYE.**

WORN EVERYWHERE.

Shop onsite at Wellington International or online at
www.wellington-internationalshop.com