

2026 Winter Equestrian Festival

Where Champions Are Made

OFFICIAL SOUVENIR PROGRAM



DECEMBER 31, 2025 – MARCH 29, 2026





CSIO JUMPING
INTERNATIONAL
DE LA BAULE



FALSTERBO HORSE SHOW



BRUSSELS STEPHEX
MASTERS



JUMPING
INTERNATIONAL
DE DINARD

REACH FOR THE CROWN



THE ROLEX SERIES.
SEVEN OF THE MOST PRESTIGIOUS EQUESTRIAN SHOWS.



CSIO ROMA PIAZZA DI SIENA



RDS DUBLIN HORSE SHOW



WINTER EQUESTRIAN
FESTIVAL



THE DATEJUST



WINTER EQUESTRIAN FESTIVAL
CSIO ROMA PIAZZA DI SIENA
CSIO JUMPING INTERNATIONAL DE LA BAULE
FALSTERBO HORSE SHOW
JUMPING INTERNATIONAL DE DINARD
RDS DUBLIN HORSE SHOW
BRUSSELS STEPHEX MASTERS



ROLEX

FOR AN OFFICIAL ROLEX JEWELER VISIT ROLEX.COM
ROLEX OYSTER PERPETUAL AND DATEJUST ARE ® TRADEMARKS.

Bringing Cities to Life

Modon shapes world-class destinations, reimagining the future of living. We are honoured to support the Global Dressage Festival as a premier sponsor – representing a shared vision for excellence with Wellington International.

| Real Estate | Hospitality | Events, Catering & Tourism | Asset & Investment Management

Official & Major Sponsor of the Wellington Equestrian Festival and the Global Dressage Festival



MÜDON
modon.com



To Our Community,

As we open the gates for the 2026 Winter Equestrian Festival, I want to personally welcome you back to Wellington International for what promises to be our most exciting season yet. With the support of Wellington Lifestyle Partners, we have spent the past year making transformative upgrades to both our competition calendar and our facility. Our shared goal is simple: to elevate every aspect of your experience as riders, owners, trainers, and supporters who make competing at Wellington International your winter tradition.

We are excited to unveil below just a few highlights of what's new for the winter competition season. More than \$16 million in prize money will be on the line, highlighted by the \$1,000,000 Rolex US Equestrian Open CSI5* Grand Prix, a Rolex Series Event. The schedule features 68 FEI world ranking classes, enhanced prize money for 4* Grand Prix qualifiers and 5* Grand Prix competition as well as increased prize money across Junior and Amateur divisions, and exciting new competition formats creating more opportunities for riders of every level to shine.

At the same time, we have invested heavily in our facilities with a focus on performance and comfort for our horses and athletes. The International Arena and Schooling Area now feature brand-new GGT textile footing installed by JTWG, Inc., while our FEI barns have been completely renovated with Barnwalkers Pro-Series stalls and Equitan rubber surfaces. Pony Island, the Grand Hunter Ring, and main lunging areas have all received major upgrades, alongside expanded golf cart paths, resurfaced roads, surfaced pathways through the grounds, new wash stalls, and improved drainage.

Spectators and competitors will notice new hospitality enhancements, from upgraded Tiki Hut dining and box seat food service to a refreshed Vendor Village. These improvements were made not only to enhance the competition but to create a world-class environment worthy of the incredible athletes and horses who compete here.

We have made significant progress on the South Venue with a new covered arena nearing completion and a Grass Derby Field that will open for competition in 2027. These projects represent our long-term commitment to ensuring Wellington International remains the premier destination for equestrian sport for generations to come.

I want to thank each of you for choosing Wellington International as your competition venue. Together, we will continue to build on a legacy that not only advances equestrian sport but also strengthens our community and creates lasting impact.

On behalf of the entire Wellington International team, I wish you a safe and successful season. We cannot wait to see you in the ring.

Best Wishes,

A handwritten signature in black ink, appearing to read 'Murray S. Kessler'.

Murray S. Kessler

Chief Executive Officer, Wellington International



BORN IN THE ARENA.



WORN EVERYWHERE.

Shop onsite at Wellington International or online at
www.wellington-internationalshop.com



EQUESTRIAN SPORT PRODUCTIONS, LLC
 14440 Pierson Rd, Wellington, FL 33414
 561-793-5867 – wellingtoninternational.com

Chief Executive Officer, Wellington International	Murray Kessler
President, Wellington International	Michael Stone
Chief Operating Officer	David Burton, Jr.
Chief Financial Officer	Sean Gagnon
Executive Vice President	Vaneli Martinov
Director of Marketing	Alicia McLaughlin
Director of Sponsorship	Lenore Brown
Director of Food & Beverage	Buu Lam
Director of Catering	Patricia Miele
Director of Video Production	Kevin Reilly
Director of Human Resources	Tery Melendez
Director of Information Technology	Patrick McKenney
Executive Chef	Roberto Diaz
Press Officer	Lindsay Brock
Technical Coordinator	JP Bordeleau
Head Show Secretary	Jennifer Glosson

2026 WINTER EQUESTRIAN FESTIVAL SOUVENIR PROGRAM

Editor	Alicia McLaughlin
Cover Image	Natalie Suto Photography
Graphic Designer	Jeanie Burns Graphics By Design
Contributing Photographers	Sportfot, Wellington International, Cassidy Klein, Ashley Neuhoof, Grace Klement, Catie Staszak Media, Natalie Suto, Helen Cruden, Sue Stickle, Thomas Lovelock, Lois Spatz
Contributing Writers	Cassidy Klein, Grace Klement, Anne Caroline Valtin, Alicia McLaughlin, Danielle Henson, US Equestrian
Printer	Commercial Printers, Inc. (954) 781-3737



YOU DREAM IT. WE BUILD IT.

— DEVELOPMENT —

IDA Development lives up to the IDA reputation of high-quality work with excellent customer service. With over 30 years experience in the development industry, we can make all your custom-building dreams come true.

- Barns
- Arenas
- Steel barns and buildings
- OBST arena testing
- Covered arenas
- Dressage mirrors
- Arena drags



Proud distributor of:



Exclusively by **IDA** DEVELOPMENT

IDA Development is proud to be the owner of all Equitan® Rubber Flooring products. The IDA Development team puts their full commitment, expertise, and passion into providing equestrian facilities with the perfect surface.

- Wash/grooming stalls
- Aisle ways
- Walkers
- Horse trailers
- Pathways
- Stall flooring

Harry L Knopp • 561.486.0502 • harryk@idadevelops.com • idadevelops.com

Visit our new showroom located in the heart of Wellington at 13833 Wellington Trace, E2, next to Rocky's ACE Hardware.

EQUESTRIAN SPORT PRODUCTIONS THANKS
THE FOLLOWING SPONSORS FOR THEIR GENEROUS SUPPORT OF
THE 2026 WINTER EQUESTRIAN FESTIVAL



WEEKLY SPONSORS

Rolex

Bainbridge Companies
Fidelity Investments®
Florida Coast Equipment
Horseware Ireland

IDA Development
MARS Equestrian
Modon
NetJets

Palm Beach County
Sports Commission
Southern Arches
WeatherTech

CORPORATE SPONSORS

Adequan®
Almased
Always Faithful Equestrian Club
Antarès Sellier France
BrainJava
BrainJuice
BrainWater
BrightView Landscape Services
Bruno Delgrange
Buckeye Nutrition
Carol Sollak, Engel & Völkers
Champion Equine Insurance
Chrome Horse Society Tequila
CMJ Sporthorse
Coastal Steel Structures
CPKC
CWD
Daily Harvest
Defiant Whisky
Dever Golf Cars
Discover the Palm Beaches
Dodd Technologies
Dutta Corp.

Equine Tack & Nutritionals
EquiRatings
Ethel M Chocolates
FarmVet
Frank & Eileen
GGT Footing Textile
Gold Coast Feed
Griffis Residential
Hermès
Human Touch
Johnson Horse Transportation
JTWG, Inc.
Karina Brez Jewelry
Karlswood
Kelcie's Horse Treats
LeMieux
Lövsta Future Challenge
Lugano
Manestream
Marshall + Sterling
Martha Jolicoeur, Douglas Elliman
Michael Smith
North Star

Palm Beach Equine Clinic
Peregrine Private Client
Perfect Products
Prestige Italia
Ringside Health
Ritz-Carlton Residences,
West Palm Beach
Rushy Marsh Farm
Savannah College of Art & Design
Sean Rush
Sportfot
Stefano Ricci
Stryk Global Diplomacy
TR Capital
Turnham Green
USEF Network
Vogel
Voltaire Design
Wellington Lifestyle Partners
Wellington Regional
Medical Center
Wingrove Academy
Wölffer Estate Vineyard
YETI

Sponsors listed above were confirmed at time of publishing.

NOTHING ELSE COMPARES

The only FDA-approved PSGAG for the treatment of equine arthritis proven to:^{1,2}

- Reduce inflammation
- Restore synovial joint lubrication
- Repair joint cartilage
- Reverse the disease process

Adequan® i.m. (polysulfated glycosaminoglycan) is recommended for the intramuscular treatment of non-infectious degenerative and/or traumatic joint dysfunction and associated lameness of the carpal and hock joints in horses. **WARNING:** Not for use in humans. **CAUTION:** Federal law restricts this drug to use by or on the order of a licensed veterinarian.

BRIEF SUMMARY: Prior to use please consult the product insert, a summary of which follows: **CAUTION:** Federal law restricts this drug to use by or on the order of a licensed veterinarian. **INDICATIONS:** Adequan® i.m. is recommended for the intramuscular treatment of non-infectious degenerative and/or traumatic joint dysfunction and associated lameness of the carpal and hock joints in horses. **CONTRAINDICATIONS:** There are no known contraindications to the use of intramuscular Polysulfated Glycosaminoglycan. **WARNINGS:** Do not use in horses intended for human consumption. Not for use in humans. Keep this and all medications out of the reach of children. **PRECAUTIONS:** The safe use of Adequan® i.m. in horses used for breeding purposes, during pregnancy, or in lactating mares has not been evaluated. For customer care, or to obtain product information, visit

www.adequan.com. To report an adverse event please contact American Regent, Inc. at 1-888-354-4857 or email pv@americanregent.com.



Scan to
see why



adequan.com/horse-owners/talk-to-your-veterinarian

1. Kim DY, Taylor HW, Moore RM, Paulsen DB, Cho DY. Articular chondrocyte apoptosis in equine osteoarthritis. The Veterinary Journal 2003; 166: 52-57.
2. Burba DJ, Collier MA, DeBault LE, Hanson-Painton O, Thompson HC, Holder CL: In vivo kinetic study on uptake and distribution of intramuscular tritium-labeled polysulfated glycosaminoglycan in equine body fluid compartments and articular cartilage in an osteochondral defect model. J Equine Vet Sci 1993; 13: 696-703.

All trademarks are the property of American Regent, Inc.
© 2024, American Regent, Inc. PP-AI-US-1078

THE BAINBRIDGE COMPANIES LLC

PROUD SPONSOR OF THE 2026 WINTER EQUESTRIAN FESTIVAL



CORPORATE OFFICE LOCATIONS

ATLANTA, GA

AUSTIN, TX

BETHESDA, MD

CHARLOTTE, NC

RALEIGH, NC

ORLANDO, FL

TAMPA FL

WELLINGTON, FL

Headquarters

Richard Schechter

Chairman & CEO

561-333-3669

www.bainbridgecompanies.com



VISIT OUR WEBSITE



The Bainbridge Difference

SERVICE. VISION. INTEGRITY. COMMITMENT.

Bainbridge is a fully-integrated family of real estate companies, who have developed and acquired more than 43,000 units representing \$8.3 billion in transactions since inception. With over 650 associates nationally, Bainbridge engages in virtually every step of the real estate process, from development and construction, acquisition and disposition, to asset management and third-party property management of multifamily real estate. Our team of experienced and knowledgeable professionals is devoted to creating exceptional living experiences for all of our residents and building lasting, mutually beneficial relationships with our partners and clients.

BAINBRIDGE



TABLE OF CONTENTS

Welcome	6	Rider Spotlight: Skylar Wireman	64
Thank You To Our Sponsors	10	Sponsor Profile: Lövsta Future Challenge.	68
Sponsor Profile: Rolex	16	Sponsor Profile: BrainJuice	72
Sponsor Profile: Modon.....	20	Creating Equestrian Spaces: Röwer & Rüb	74
WEF Economic Impact.....	22	Groom Spotlight: Derren Lake.....	78
Sponsor Profile: IDA Development.....	26	Wellington Quarterly Magazine	82
Sponsor Profile: GGT Footing Textile.....	28	Spectator's Guide to Equestrian Competition.....	88
Sponsor Profile: Perfect Products	32	Unbridled Community Power: Great Charity Challenge..	94
What's New in 2026?.....	36	2025 WEF Circuit Champions	112-116
Sponsor Profile: Palm Beach Equine Clinic	40	2026 WEF Competition Schedule	120
US Equestrian.....	42	2026 WEF Vendors	122
Sponsor Profile: Ringside Health	46	Advertiser's Index	126
Rising Star: Cisy Zhou	50	2025 Sportfot Gallery.....	128
Sponsor Profile: Adequan®.....	54	Wellington International Site Map	134-135
2026 Cover Photographer: Natalie Suto.....	56	Equestrian Village Map & Vendors.....	136

A photograph of three people in a professional setting. On the left, a man with glasses and a mustache, wearing a blue blazer over a pink shirt, is looking towards the center. In the middle, a woman with curly blonde hair and glasses, wearing a grey blazer, is looking down at a tablet she is holding. On the right, a woman with dark hair is partially visible, looking towards the center. The background is a blurred office interior.

FIDELITY WEALTH MANAGEMENT

IT'S YOUR STORY. IT'S YOUR PLAN.

At Fidelity, no two wealth plans are the same. That's because no two people are the same. By taking the time to get to know you and your full financial picture, we can help you create a comprehensive plan that's as unique as you are.

Boca Raton Investor Center
1400 Glades Road
University Commons, Unit 180
Boca Raton, FL 33431
800.544.8237

Palm Beach Gardens Investor Center
3501 PGA Boulevard
The Grand Bank Center, Suite 100
Palm Beach Gardens, FL 33410
800.553.3292



WEALTH MANAGEMENT

Investment minimums apply.

Investing involves risk, including risk of loss.

The Fidelity Investments logo is a registered service mark of FMR LLC.

Fidelity Brokerage Services LLC, Member NYSE, SIPC, 900 Salem Street, Smithfield, RI 02917

© 2025 FMR LLC. All rights reserved. 1066901.3.0



PHOTOS © ROLEX/ASHLEY NEUHOF

ROLEX AND

Rolex celebrates human achievement, recognizing the journey marked by milestones and emotions that culminates in defining moments – determined by a path followed, not just a trophy. For almost 70 years, Rolex has cultivated an enduring legacy with the equestrian world and is now a major presence at play behind the finest riders, competitions and institutions. The brand's contribution to excellence in equestrianism is based on this heritage, encouraging modernization while respecting the elegance of this prestigious sport.

Whether supporting leading athletes, the CHI Geneva or the Rolex Grand Slam of Show Jumping, Rolex has built on a relationship that began in 1957, through an alliance with British show jumper Pat Smythe. A pioneer in equestrianism, she became the brand's first Testimonee from the discipline. Rolex's perpetual support is highlighted by its affiliation with international events and competitions that represent the pinnacle of the sport, from the equestrian Majors to the shows making up the Rolex Series.

2026

Rolex Series Events



Winter Equestrian Festival – Rolex Finale Week	March 25–29
CSIO Roma Piazza di Siena	May 28–31
Jumping International de La Baule – Officiel de France	June 10–14
Falsterbo Horse Show	July 8–12
Jumping International de Dinard	July 30 – August 2
RDS Dublin Horse Show	August 4–9
Brussels Stephex Masters	August 25–30

EQUESTRIANISM



ABOUT THE ROLEX SERIES

The Rolex Series brings together seven of the world's most respected equestrian events, each supported by the Swiss watchmaker. These historic gatherings have many qualities in

common, offering some of the finest facilities, long-standing traditions and the highest level of competition. All share the honor of having been won by some of the greatest riders to have graced the sport. They

reflect the brand's own unwavering commitment to high performance and boast a background deeply rooted in equestrianism, capturing the timeless essence of the sport while embracing innovation with a continuous drive for improvement.

Since 1974, Wellington International has stood as a cornerstone of equestrian excellence. Spanning approximately 186 acres, this premier venue features 18 state-of-the-art competition arenas and welcomes over 300,000 visitors each year. With Rolex as main sponsor since 2012, the facility has hosted the Winter Equestrian Festival (WEF) for nearly 50 years, the world's largest and longest-running hunter/jumper horse show, held annually during the winter season.

The Winter Equestrian Festival, the first Rolex Series event in the annual calendar, welcomes the world's most talented riders and horses from January through to March, with the highly anticipated Rolex Finale Week the season pinnacle. The highlight of this special week is the Rolex US Equestrian Open Grand Prix on March 28, a competition that promises an evening of outstanding skill, precision and equestrian excellence amid a thrilling atmosphere.





A private jet is parked on a runway at sunset. The sky is a warm orange and yellow, with the sun low on the horizon. The jet is white with dark stripes and is facing towards the right. The runway is in the foreground, and there are some hills in the background.

ONLY **NETJETS**[®]

Limitless Exploration

With seamless access to over 5,000 airports worldwide,
only NetJets empowers endless discovery.

Begin your journey at netjets.com.



MODON:

Sharing traditions of artistry and athleticism

**Modon creates
places where
people can live
well, connect
easily and feel
part of a
thriving,
meaningful
environment.**

As an investor in Wellington International's future development, Modon Holding is proud to join the Winter Equestrian Festival as a premier sponsor, and to stand beside an event that represents the highest expression of equestrian sport.

Listed on the Abu Dhabi Securities Exchange, the Modon group operates

across real estate, hospitality, asset and investment management, and events, catering and tourism. Through its presence across four continents and 13 countries, including an established real estate portfolio that spans the Middle East, Europe and North Africa, Modon shapes world-class destinations, reimagining the future of living.

International landmarks

include Hudayriyat Island in Abu Dhabi, where Modon is creating a leisure, sports and luxury residential destination around half the size of Manhattan. On Egypt's north coast, Ras El Hekma promises timeless Mediterranean living across a 66 square mile master plan. In Spain, La Zageleta ranks among the most exclusive and luxurious residential golf estates in Europe, setting the very



pool, already on the calendar for pro-tour surfing events, with the Middle East's first UCI Category 1 indoor velodrome coming soon. Arena, a Modon company, is the world's leading events infrastructure company, providing structures, seating and multipurpose venues for unforgettable experiences.

Modon now brings that range and depth of experience to its investment in Wellington Lifestyle Partners, supporting the long-term evolution of Wellington International showgrounds

and their surrounding areas. This includes enhanced equestrian facilities, premium residential living, boutique hospitality and a walkable lifestyle marketplace. The ambition is clear: elevate Wellington and deliver a long-term plan to strengthen its standing as the global home of equestrian sport – and of luxury living.

Already recognized globally for large-scale, high-value real estate and lifestyle projects, Modon's partnership in Wellington is built on a shared vision for excellence in destination

development, and a unique collaboration that brings together expertise in real estate, equestrian, hospitality and sports-led communities.

Year after year, the world's finest riders return to Wellington for the Global Dressage Festival and Winter Equestrian Festival. Modon is honored to be part of this season and looks forward to playing a meaningful role in Wellington International's future – shaping a destination that already sets a global benchmark for equestrian excellence.

highest standards in the ultra-luxury segment. Modon is also a joint-venture partner in 2 Finsbury Avenue, a prime 750,000 square feet office tower under construction in the heart of the City of London.

Beyond property and real estate, Modon operates two of the world's leading events venues with ExCel in London and ADNEC Centre in Abu Dhabi. The hospitality segment features a collection of 28 hotels and resorts. Sports and leisure assets include the world's largest man-made wave



WINTER EQUESTRIAN FESTIVAL LIFTS PALM BEACH COUNTY WITH **\$536.2** **MILLION** IN ECONOMIC IMPACT

In a report conducted after the 2025 Winter Equestrian Festival (WEF), \$536.2 million in economic impact was cited for Palm Beach County as a result of the 13-week event running January through March. WEF attracts 31,000 competitors from over 42 countries and all 50 states

to Palm Beach County each year.

The report was prepared for the Palm Beach County Sports Commission (PBCSC), a private, not-for-profit organization that is contracted by Palm Beach County to promote

and market the area as a sports tourism destination. The findings showed a 28.2% increase from the 2024 impact of \$403.6 million, reinforcing WEF as a marquee event in the equestrian realm, but also a major economic driver for Palm Beach County.

Total Economic Impact from the 2025 WEF Season



Increase in Total Economic Impact:

\$536.2 million brought to Palm Beach County's GDP, a 28.2% growth rate from the 2024 WEF Economic Impact Report. More than doubled last year's 14% growth from 2023.



Job Creation:

4,869 jobs were created across multiple industries, a 28.4% increase from 2024.



Labor Earnings:

A total of \$153.9 million in labor earnings was generated throughout the economy with employees earning an average wage of \$31,690, a 30.53% and 1.95% increase from the previous year, respectively.



Lodging Industry:

A total of 210,911 paid room nights were generated by WEF 2025, up from the 161,061 paid room nights from WEF 2024.

Primary Economic Drivers:



Total Horse Expenditures:

\$338.68 million growth in GDP (a 13.2% increase from WEF 2024). This accounts for 63% of the total GDP impact.



Participant Tourism Expenditures:

Equivalent to \$109.6 million growth in GDP.

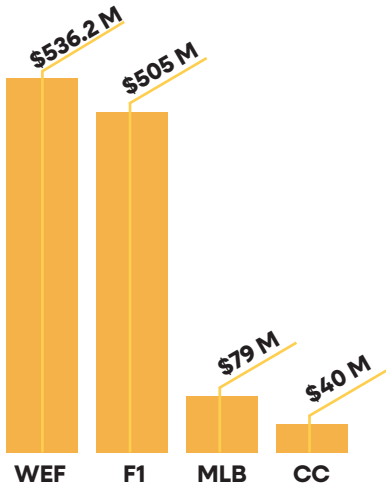


Spectator Impact:

Combined spectator expenditure generated \$88 million in local GDP, up dramatically from last year's \$8.2 million.

How the Winter Equestrian Festival Compares to Other Major Florida Sporting Events

SPORTING EVENT	ANNUAL ECONOMIC IMPACT	COUNTY
Winter Equestrian Festival	\$536.2M	Palm Beach
Miami Grand Prix (Formula 1)	\$505M	Miami-Dade
MLB Spring Training	\$79M	Palm Beach
Cognizant Classic	\$40M	Palm Beach





Looking Ahead to 2026

The Winter Equestrian Festival is not just one of the largest annual equestrian competitions in the world; it is a cornerstone of Florida's sports tourism economy. As participation continues to grow and economic

impact reaches new heights, Wellington International is committed to elevating the experience even further. Looking ahead to WEF 2026, running from December 31 through March 29, we are re-envisioning the future of the festival with major upgrades and higher-

quality facilities designed to enhance every aspect of the competition. From world-class amenities to improved experiences for riders, spectators, and sponsors alike, we're setting a new standard. We can't wait to welcome everyone back for an unforgettable season.



ACCESS LUXURY

Covering the latest in cars, aviation, marine,
travel, watch collecting, and more.



Robb Report

robbreport.com

BEYOND THE BARN:

The Spirit Driving IDA Development's Rise

Fueled by craftsmanship, compassion, and community, IDA's work reflects a belief that great spaces create even greater stories.

It's been a busy year for IDA Development, as they continue to cement their status as the industry leader in equestrian services.

In the last 12 months, their major projects include several significant upgrades at Wellington International. IDA Development completely renovated the FEI barns, handling the demolition and overall upgrades, while Barnwalkers supplied and installed 130 high-quality Professional Series stalls. In addition, they constructed 12 steel barns with 32 stalls each at the newest polo club, Plyrs, as well as a state-of-the-art jumping facility on

50th Street in Wellington and a 150x250 covered arena complemented by a 30-stall barn in Vero Beach.

In addition to the FEI stalls, IDA Development upgraded the aisles by installing more than 8,000-square-feet of Equitan poured rubber flooring - designed to deliver superior safety and shock absorption for all equine athletes. The renovation also included upgraded electrical and plumbing systems and fresh paint throughout the barns.

IDA Development further expanded Equitan rubber pathways on the grounds at Wellington International,

adding more than 10,000 square feet from Ring 10 to the permanent barns—another step in prioritizing equine safety. Equitan was also installed within the landscaping of the Vendor Village, enhancing the area with a clean and attractive look for visitors. In addition, a new porous rock pedestrian walkway was installed by Pony Island. They will also be building five steel barns with 450 stalls as part of the new development at Wellington International.

"We have 15 full-time employees putting down Equitan somewhere in the U.S. six days a week," said

PHOTOS © EQUUS SOLUTIONS

IDA Development owner Harry Knopp.

IDA is also branching out beyond Wellington with projects in Virginia, Cleveland, and La Quinta, California.

“Our goal is to keep our presence here in Wellington and in Ocala, but we’re getting a lot of traction inside the U.S. and outside the U.S.,” said Knopp.

“We completed a three-acre jumping facility in Guatemala along with an eight-horse Barnwalkers walker and we’re also looking at Costa Rica and Brazil,” added Knopp. “I do see that within the next five years we will be the largest equestrian service provider in the U.S.”

Longtime horseman and business leader Murray Kessler, CEO of Wellington International, agrees that IDA Development is making a difference.

“Harry and IDA have been helping us upgrade the property for many years and we’ve been able to turbocharge that improvement this year,” said Kessler. “Harry has moved mountains to make a real difference in WEF and I can’t wait for everyone to see the incredible work IDA Development has done.”

IDA Development is also known for the state-of-the-

art covered riding arenas, IDA steel barns and buildings and custom equestrian estates. As a premier builder, their expert team ensures every detail is flawless, making the client’s dream home or facility a reality.

In addition to IDA Development, Knopp has partnered with Bart Kenis in creating Barnwalkers, which allows IDA to offer top-of-the-line barn products, such as beautifully designed

European stalls, De Sutter Naturally fencing, walkers as well as accessories, all focusing on horse safety and durability.

Knopp has grown IDA Development from a small operation that began on May 1, 2017 into a superior, go-to organization.

His business philosophy is simple and effective:

“One job at a time. One day at a time. We’re a company of integrity,” said



IDA owner Harry Knopp (left) with Wellington International CEO Murray Kessler

Knopp. “Provide high-quality products and take care of your people and your people take care of your clients. Really, it’s one day, one week, one month—that turns into one year, and you just build it from there.”





Building the Foundation of Performance

When riders enter the ring at the Winter Equestrian Festival, their focus is on performance, precision, and partnership with their horse. The eyes of the audience follow every stride, every jump, and every landing. Yet, beneath the brilliance of the sport lies something that often goes unnoticed, but is absolutely essential to success: the footing and all its carefully selected ingredients.

Footing textile is more than the ground beneath us—it is the stage on which champions are made. It is the unseen support system that protects the horse's body, empowers their athleticism, and gives riders the confidence to ask for brilliance. Whether training at home or stepping into the international spotlight, footing is the silent partner in every ride. GGT

Footing Textile is proud to have been selected by the Winter Equestrian Festival and JTWG as a key ingredient to the new footing installed in 2025.

Why GGT Textile in Footing Matters — at Home and in Competition

The average show jumper takes thousands of strides each week, both in the barn arena and at competitions. Each stride delivers force and impact through the horse's body. Without the proper textile in footing, those repetitive motions can result in strain, injury, or compromised performance. Quality footing, on the other hand, provides cushion, stability, and consistency that extend a horse's career and safeguard their health.

At home, footing textile sets the tone for training. Horses learn, build

strength, and refine technique in their home arenas. If the ground is too deep, it can sap energy and put pressure on soft tissue. If it is too hard, concussion reverberates through joints and bones. An arena that feels the same, day after day, gives both horse and rider confidence in the process.

In competition, the stakes rise. Riders ask for speed, precision, and daring athleticism. Horses turn tighter, jump higher, and gallop faster. In those moments, footing textile must not only support performance but protect it. A secure surface helps prevent slips, provides reliable takeoff points, and ensures that horses leave the arena ready to compete again tomorrow.

Simply put, footing textile is a vital ingredient to the foundation of equestrian sport. Riders invest in training, nutrition, veterinary care, and tack with the utmost precision; footing textile deserves that same level of investment, because it touches every single stride.

What makes GGT Footing Textile the leader? It starts with innovation. GGT's specialized blend of additives combine advanced geotextiles and fibers with sand to create footing with the perfect balance of stability and cushion. These textile additives allow horses to push off the ground with power, land with security, and move with freedom. Unlike traditional sand surfaces, footing containing GGT Footing Textile maintains its integrity under pressure, ensuring consistency in all conditions.

But the product itself is only part of the story. GGT Footing Textile is defined just as much by its people—the experts who bring decades of experience and an unwavering commitment to customer service. From the first consultation, GGT Footing Textile works with clients to assess their needs, design the right blend, and oversee installation with precision. The relationship doesn't end there with ongoing support and the pairing of trusted arena builders ensures arenas continue to perform year after year.

wear gradually affect footing quality. That's why GGT Footing Textile specializes in refreshing existing surfaces. A renewed arena containing GGT Footing Textile restores consistency, improves performance, and revitalizes training.

Making a change to upgrade an existing surface with GGT Footing Textile is more than an investment in your facility. It is an investment in your horse's health and your own peace of mind. Riders should never have to question the ground beneath them. Footing containing GGT Textile, they don't have to.

A refreshed surface means fewer risks, greater performance, and more confidence in every stride. Whether you're a professional preparing for international competition or an amateur investing in your horse's future, footing containing GGT Textile offers the foundation for success.

The Foundation of Equestrian Sport

In a sport where every detail matters — from conditioning programs to saddle fit to nutrition — footing often remains the unsung hero. Yet, it underpins every choice riders and trainers make. Without quality footing, the best horses cannot perform at their best.

That's why at the Winter Equestrian Festival, and at barns and venues across the globe, the name GGT Footing Textile has become synonymous with excellence. Riders know that with GGT, they are standing on more than just ground — they are standing on decades of expertise, innovation, and dedication to the sport.

As the season unfolds, the brilliance on display in Wellington will captivate audiences and inspire riders everywhere. And while the spotlight will always be on the athletes, the stage itself—crafted and cared for by GGT Footing Textile—remains an essential part of the performance.

Because when it comes to protecting horses, elevating sport, and building the foundation for greatness, footing with GGT Textile additives is more than a surface—it's the ground you can believe in.



The GGT Footing Textile Difference

For more than two decades, GGT Footing Textile additives have been the leader in arena footing technology. From private barns to international venues, GGT Footing Textile additives have shaped the sport quite literally from the ground up. Riders across disciplines trust GGT Footing Textile additives because the company understands what is at stake: the safety of horses, the success of riders, and the longevity of careers.

This combination of technical excellence and personal service is why GGT Footing Textile has been chosen time and again by top competition venues, including the very stage of the Winter Equestrian Festival itself. When the world's best riders arrive in Wellington, they know they are competing on footing they can trust.

Refresh. Renew. Ride with Confidence.

Even the best arenas need care over time. Weather, usage, and natural



THE WELLINGTON

WELLINGTON, FLORIDA

*Celebrating the Best of South Florida
Living and the Equestrian Lifestyle*



ORAL REPRESENTATIONS CANNOT BE RELIED UPON AS CORRECTLY STATING THE REPRESENTATIONS OF THE DEVELOPER. FOR CORRECT REPRESENTATIONS, REFERENCE SHOULD BE MADE TO THE DOCUMENTS REQUIRED BY SECTION 718.503, FLORIDA STATUTES, TO BE FURNISHED BY A DEVELOPER TO A BUYER OR LESSEE.



Nestled in the heart of Palm Beach County and the world's premier equestrian destination, there is a place to call home in the center of everything, yet a world away – a place defined by design, architecture, landscaping, wellness and service.

Welcome to The Wellington, where you and your family will thrive.

Currently under construction, a new private residential club community, master planned by Workshop/APD with landscape by renowned

LaGuardia Design Group, will include only 253 residences. Designed by a world-class team of architects, including Workshop/APD, Morris Adjmi Architects, D. Stanley Dixon and Squire & Partners, each home will bring distinct character.

Across the community are amenities for all ages and pursuits, from a championship golf course and practice facilities designed by David McLay Kidd, racquet courts, resort-style pools, a wellness and fitness center, a children's club and programs, an equestrian facility, and dedicated concierge services.

THEWELLINGTON.COM | INFO@THEWELLINGTON.COM

Developed by Wellington Lifestyle Partners



The information contained in this presentation shall not constitute an offer to sell or solicitation of an offer to buy securities, a real property interest or a club membership. The sketches, renderings, graphic materials, plans, specifications, terms, conditions and statements contained in this brochure are proposed only, and the Developer reserves the right to modify, revise or withdraw any or all of same in its sole discretion and without prior notice. The developer also reserves the right to replace designers and architects at any time, without notice. All improvements, designs and construction are subject to first obtaining the appropriate federal, state and local permits and approvals for same.

PERFECT PRODUCTS: Cheers to 20 Years!

The 2026 horse show season will be especially meaningful for our family as it marks our 20th year in the equine health business. Perfect Products has matured from a single-product offering in 2006 to an impressive selection of solution-focused formulas that have been embraced by the equine performance industry. Like any athlete, horses experience performance related anxiety, pain, gastric discomfort, and metabolic issues that can impact

them in competition, and we have developed unique, ethical products to target those issues and help support their management.

As we have grown, we have enjoyed the trust of some of the most respected equine performance programs. Whether it's show jumping, hunters, equitation, dressage, western pleasure or reining, successful programs focus

on bringing the best-prepared horse to each competition. Understanding their respective management needs has led us to develop nuanced, ethical formulas that help each horse

compete at their full potential every time they perform. We are grateful that so many of these industry leaders are kind enough to help us carefully evaluate and fine-tune formulas as we develop them, and I believe their input plays a big part in the reputation for effectiveness our products enjoy.

Once again this season, our family will join the crowds cheering on the renowned established stars

(continued page 34)



Jeff Morgenstern
Founder, Perfect Products
The Makers of Perfect Prep EQ™

© SHANE RUX

THE MAKERS OF PERFECT PREP™

PERFECTPRODUCTSEQ.COM



JOHN FRENCH & CRYSTAL BLUE

CAREFULLY DEVELOPED TO PERFECTION.

By the time a new Perfect Products formula reaches the market, top professionals have already tested and verified its efficacy.

The proof is in the performance.

To support your horse's optimal performance, ask for Perfect Products formulas at your preferred retailer.

KINDMEDIA



PERFECTPRODUCTS

Solving Your Horse's Pre-Event Challenges Since 2006



as well as the talented up-and-coming riders as they make their mark in the most exciting, highest-level competition in the horse world. We are unbelievably grateful for the opportunity to serve and be part of such a great industry, and we salute Wellington International and WEF for again making Wellington the epicenter of the Horse World for the next three months.

Renee Morgenstern (left)
Molly Morgenstern (below)



LeMieux

LeMieux



Shop LeMieux at The Tackeria and WEF Showgrounds
Visit our flagship store by the Rolex Bridge!

WHERE CHAMPIONS ARE MADE:

Wellington International Reveals Transformative 2026 Competition Season Enhancements

COMPETITION ENHANCEMENTS

This year, the Winter Equestrian Festival once again sets the bar high with more than \$1 million in additional prize money, bringing the season total to a landmark \$16 million. Headlining the calendar, the Rolex U.S. Equestrian Open CSI5* Grand Prix, a Rolex Series Event, will offer \$1,000,000 in prize money, affirming its status as one of the season's most anticipated competitions.

Three additional CSI5* Grand Prix events will each feature \$500,000. Significant prize money increases also extend to all 4* WEF Grand Prix Qualifiers, which rise from \$62,500 to \$116,100.

The season will showcase 68 FEI Jumping World Ranking classes. The FEI Winning Round Qualifiers will feature a two-round format with faults carried forward, designed to heighten both strategy and excitement. Junior

and Amateur Jumper Classics at 1.25m and above will benefit from enhanced prize money, increasing from \$10,000 to \$15,000. Two new classes will also be introduced: a Medium Amateur Team Competition and a Masters Class under the lights, bringing new dynamics to the schedule.

Hunters also take center stage in 2026 with an impressive \$1.5 million in total hunter prize money. The season will include

10 Hunter Derbies and two featured WCHR weeks, offering premier competition for top hunter combinations and heightened excitement throughout the circuit.

FACILITY ENHANCEMENTS

This year, the changes extend well beyond the competition, with enriched night-class entertainment and elevated spectator experiences creating an atmosphere worthy of world-class equestrian sport taking center stage.

Theme Nights during Saturday Night Lights bring fresh energy, while the YETI Box Seats offer a premium experience. The launch of the newly refreshed BrainJuice Tiki Hut introduces updated vibes and furniture, creating a vibrant venue for athletes, friends and families.

Accessibility resources are also available throughout all hospitality venues, including large-print menus, reading glasses, flashlights,

magnifying glasses, and sensory bags, ensuring a welcoming and inclusive experience for every spectator.

In late fall, a new website was launched that is focused on user experience and offers enhanced accessibility, multi-language support, and all events in a single destination. New merchandise is now available featuring an expanded apparel line and new Winter Equestrian

Festival branding is available in-store and online.

This season begins with a full renovation of the FEI barns, partnering with IDA Development and Barnwalkers, to bring all-new Barnwalkers Pro-Series stalls and Equitan rubber surfaces to the stabling area.

Significant footing enhancements follow across the grounds, with

(continued page 38)



JTWG, Inc. installing new GGT textile additives into their footing in the International Arena and the International Schooling Area, as well as updated footing in the Grand Hunter Ring, main lunging ring, and Pony Island.

Pony Island underwent a transformative renovation with rebuilt Rings 11 and 12, featuring improved base, footing, and drainage, along with new restroom facilities, picnic tables and more.

Additional upgrades around the venue include paved surfaces between the barns and expanded golf cart paths & parking to improve the traffic flow throughout the property as well as strengthened drainage systems. Bridle paths have also been redesigned with new Ebb & Flow layouts and Equitan surfaces, providing improved footing and better drainage across the grounds. The barns now feature upgraded Wi-Fi connectivity, refurbished wash stalls, and newly improved manure bins to support a more efficient



daily routine for exhibitors and staff.

Ongoing enhancements extend into hospitality and guest experience with elevated hospitality offerings, including enhanced YETI Box Seat service, new furnishings in the BrainJuice Tiki Hut and the Modon International Club will enjoy upgraded buffet bars, additional action stations and bespoke experiences.

These improvements are complemented by extensive landscaping enhancements across the property, including the refurbishment of

DeNemethy Hill with new irrigation and the removal of old wood, replacement of the former International Arena deck with fresh sod, refreshed plantings at the main entrance and within Vendor Village, and overall landscape enhancements that elevate the beauty and functionality of the venue.

Wellington International's growth into the South Parcel spearheaded by Wellington Lifestyle Partners advances with four rings, all open for exercise during WEF 2026, while the Grass Derby Field is currently propagating and will mature for competition in the 2027 season.

Construction is almost complete on a new 205' x 420' covered arena, further enhancing the facility's world-class infrastructure.

In addition, ongoing roadwork improvements at Pierson Road & South Shore and Gracida & South Shore are helping to improve traffic flow and overall accessibility throughout the grounds.

There is much to look forward to in the 2026 Winter Equestrian Festival season, and we can't wait to cheer you on!

DEFIANT

WHISKY



BLUE RIDGE DISTILLING CO.

DEFIANTWHISKY.COM



© FLAXEN MANE MEDIA

Palm Beach Equine Clinic

Peak Performance and Compassionate

For more than four decades, Palm Beach Equine Clinic (PBEC) has been at the heart of South Florida's equestrian community, providing exceptional veterinary care to horses competing at the highest levels. As the Official Veterinarians of the Winter Equestrian Festival (WEF), Global Dressage Festival, and National Polo Center, PBEC ensures every horse has access to world-class expertise — whether for routine health papers, emergency services, advanced imaging, surgery,

or second opinions in collaboration with referring veterinarians. At WEF, PBEC veterinarians are on-site daily throughout the circuit to oversee competing horses and help with any needs at their satellite location next to the Stabling Office.

Comprehensive Expertise, All Under One Roof

PBEC's team of more than 30 veterinarians represents one of the most comprehensive collections of equine medical knowledge in the region. Their specialties span internal medicine, emergency care, reproduction and fertility,

regenerative medicine, podiatry, dentistry, and alternative therapies such as equine medical manipulation and acupuncture. This breadth of expertise allows PBEC to think outside the box when it comes to both prevention and treatment, keeping sport horses sound and competitive.

Cutting-Edge Imaging and Technology

One of PBEC's standout features is its unmatched diagnostic imaging capabilities, anchored by South Florida's only Canon Aquilion LB Exceed CT

scanner. Unlike traditional CT machines, this advanced system moves around the patient, elevating to scan the head and neck or lowering to image the limbs of a standing horse. This level of precision gives veterinarians crucial information to make timely, accurate diagnoses — often guiding successful treatment or surgery.

"As the official veterinarians for WEF and GDF, we take great pride in being available 24/7 to care for any equine in the Wellington area," said PBEC

President Dr. Scott Swerdlin. “The standards we set for ourselves — and the level of talent within our team — are second to none. We’re proud to provide top-level care to horses and riders who come here from around the world.”

Trusted by Horse Owners

PBEC’s commitment to excellence has earned the trust of riders, trainers, and owners across disciplines. Hear from some of their clients, who share glowing testimonials about the clinic’s expertise and care:

“Dr. Weston Davis and his

ic: Care

team saved my horse’s life. He is a five-star surgeon; my horse was really lucky to have Dr. Davis and is alive because of him. I will always



be grateful to Palm Beach Equine Clinic and have so much gratitude toward them.”

“We have had two overnight stays at Palm Beach Equine Clinic: one planned for Kissing Spine surgery and one unplanned for a major colic. The colic was due to a nephrosplenic entrapment and was resolved without surgery. Everyone from the vets, to the techs, to the office staff, was always well trained, talented, and kind to both

my horse and me. Highly recommend, over and over.”

Beyond Horses: Helping a Sea Turtle in Need

PBEC’s technology and compassion extend beyond equine athletes. When a loggerhead sea turtle named Pennywise washed ashore injured, Loggerhead Marinelife Center turned to PBEC for help. Using the CT scanner, PBEC veterinarians helped diagnose Pennywise’s injuries and discovered she was carrying a clutch of eggs.

“A big thanks goes to Dr. Karen Beste at PBEC, who allowed us to come in and use their machine and help us with getting good CT scan images, because those were really important for us to get a good diagnosis and treatment plan for Pennywise,” said Dr. Heather Barron, chief science officer at the center.

Dr. Beste added, “We’re really lucky to have this CT scanner. It’s extremely versatile. It’s a very powerful machine, and it’s obviously big enough to handle animals that wouldn’t normally have imaging options. We’re really happy to be able to help this turtle. We are available to do anything we can to help any animal in need.”

A Vital Part of Your Horse’s Team

Whether your horse is a seasoned grand prix champion, a young horse on the rise, or a beloved family pet, Palm Beach Equine Clinic wants to be part of your team, offering the expertise, technology, and compassionate care needed to keep horses healthy and performing at their best. Trusted by top equestrian athletes from around the world, PBEC remains the gold standard in equine veterinary medicine.

To learn more about PBEC’s services, visit www.EquineClinic.com or call 561-793-1599.



STILL SETTING THE STANDARD:

U.S. Jumping's Laura Kraut Keeps Raising the Bar

By Danielle Henson/US Equestrian Communications Dept.

U.S. Jumping athlete Laura Kraut continues to prove that longevity and excellence can ride side by side at the very top of international jumping. With wins and podium finishes across some of the world's most prestigious events, including her unforgettable victory in this year's Rolex Grand Prix of Ireland CSIO5* in Dublin, and a close second in the Rolex Grand Prix of Aachen CSIO5*, Kraut has crafted a season in 2025 defined by partnership, precision, and an unwavering belief in her string of horses.

"It's been a really strong year," Kraut said. "I think confidence has been the biggest thing for me. When you have a horse like Baloutinue, it gives you that trust and belief that carries into all the others. Confidence is everything, especially when you can have that in the horses you're riding."

That confidence has been visible in every round. Whether piloting Baloutinue, a 2010 Hanoverian gelding (Balou du Rouet x Landor S)

owned by St. Bride's Farm, who is also affectionately known as "Balou," or Bisquetta, a 2014 Belgian Warmblood mare (Bisquet Balou C x Takashi van Berkenbroek) owned by Cherry Knoll Farm Inc., who is known at home as "Biscuit," Kraut has shown her trademark grittiness, with a masterful blend of both experience and instinct. Her performance in Dublin with Bisquetta, completing the only clear round of the day, was one for the history books. "That was just crazy," she recalled. "It was really outstanding to have her be the only clear round. I've never had that happen. It was so meaningful to win a Rolex Grand Prix like Dublin. It's not easy to do and it was really fun." Kraut's results this season have built steadily on early momentum. A hard-earned second place finish with Bisquetta in the Rolex US Equestrian Open Grand Prix CSI5* during the finale of the Winter Equestrian Festival in Wellington, Fla., set the tone for the remainder year, followed by numerous U.S. Jumping Team successes and other CSIO5* Grand Prix podium finishes only further reaffirmed her position among the sport's elite.

By October, Kraut climbed to eighth in the FEI World Rankings, becoming the first woman to break into the top ten since her longtime friend and fellow U.S. Jumping teammate Beezie Madden did it 2021. Joining her formidable U.S. compatriots, Kent Farrington and McLain Ward, in the world's top ten, Kraut's rise is more than a personal milestone. It inspires her peers and the next generation of equestrian athletes who look to her accomplishments and continued success as motivation within their own careers.

"I have a lot of people tell me, 'We're nearly your age, and we've decided we're going to keep going,'" she said. "I love that. It's not

something I set out to do, but if my career inspires someone to keep doing what they love, that's special."

Her horses, she says, are the key to keeping her motivated. "Both Balou and Bisquetta are a little quirky, a little funny," Kraut said fondly. "But what I love most is that they're both so brave. I can trust them completely; they'll do anything I ask with a lot of heart. When you're jumping at the level of Aachen or Dublin, you need that faith in your horse."

Behind Kraut's success is a tightly knit team that includes her sister and longtime manager, Mary Elizabeth, and her partner, Nick Skelton, alongside the dedicated team behind her who keep the operation running smoothly. "Without them, none of these results would be possible," she said. "You start first with the horse, of course, but then it's the owners; my sister Mary Elizabeth; Julie Welles, who keeps them schooled when I can't; to Nick who helps me strategize; Alex Tyler-Morris and Margo Thomas who take care of them; our vet and blacksmith — they're all part of it."

This season, Kraut has also placed renewed focus on team competitions, a reflection of her commitment to representing the U.S. on the global stage. "We made up our minds that it was something we were going to concentrate on," she said. "We collectively, as a team, have had a very strong year. I've really enjoyed dedicating more time to that."

That renewed focus has paid off in remarkable fashion. Kraut helped lead the U.S. Jumping Team to multiple Nations Cup victories in 2025, starting the season with a win at the FEI Jumping Nations Cup Wellington CSIO4*, where she rode Tres Bien Z as part of an all-female American team. She followed that

(continued page 44)



**RICHARD
VOGEL**
& United Touch S
European
Champions
2025



© Sportlot

Every medal tells a story - of dedication, connection, and trust. Crafted in Italy, perfected through innovation, Prestige saddles support riders who turn passion into victory.

**HENRIK
VON
ECKERMANN**
& King Edward
World
Champions
2022



GOLD MEDALS



PRESTIGE

WWW.PRESTIGEITALIA.COM

with another triumph in Ocala at the League of Nations CSIO5* on Dorado 212 before joining the winning U.S. squad at the Jumping Nations Cup of Rome CSIO5* aboard Bisquetta. Most recently, Kraut and Bisquetta contributed to a historic Jumping Nations Cup CSIO5* victory at CHIO Aachen, cementing one of the strongest Nations Cup seasons in recent U.S. team history.

Balancing the demands of elite sport with longevity is something Kraut has mastered. Her secret? Keeping her horses, as well as herself, fresh. “The best way to be competitive is to make sure your horses are in good condition and not overused,” she said. “I’m lucky to have a string of horses that can step up when needed. If I only had one, I’d be doing half of what I do now.”

When she’s not in the ring, Kraut’s passion for competition still shines through. She’s an avid sports fan and keeps up with Nick’s sons, accomplished steeplechase trainers Dan and Harry Skelton. “I enjoy following their results—they’re amazing at what they do,” she said. “It’s fun for me to follow any sort of competition.”

Kraut relishes the opportunity to connect with athletes across

disciplines, including tennis, a sport she enjoys watching. During the 2024 Paris Summer Olympics, she met tennis legend and fellow Olympian Serena Williams, who had come to watch the equestrian competitions. After the jumping, Williams turned to Kraut and said, “This was the most exciting thing I have ever seen.”

As she looks ahead, Kraut’s focus is squarely on the next chapter, including the 2026 World Cup Finals in Fort Worth, Texas, and the 2026 FEI Jumping World Championships in Aachen, Germany, next summer, where she

hopes to return two decades after previously representing the U.S. there in 2006. “I have a fantastic group of horses right now, so my motivation is to keep myself fit and strong and get the best out of them,” she said. “I did the World Championships in Aachen in 2006, so to go back 20 years later would be really special.”

With another season of world-class results and the respect of fans and fellow riders alike, Kraut’s list of achievements continues to grow, but she remains an enduring symbol of excellence, partnership, and the timeless joy of the sport.



© MACKENZIE CLARK



US
EQUESTRIAN



Griffis Residential is proud to support equestrian sports and the participants of the 2026 Winter Equestrian Festival.



Griffis West Palm | 223 Units | West Palm Beach, FL

Built on 40 years of experience, Griffis Residential provides eligible investors direct access to institutional-quality multifamily investments.

The closed-end fund series is globally recognized for its value-add strategies in real estate and consistently achieves top-quartile returns.

Griffis Residential, a registered investment advisor, has earned a reputation for its resilient all-weather strategy and strong track record of value creation across multiple market cycles.

GriffisResidential.com

Austin ■ Dallas ■ Denver ■ Los Angeles ■ Portland ■ San Diego ■ Seattle ■ Silicon Valley ■ West Palm Beach ■ Washington D.C.

Ringside Health:

Driven by Passion, Backed by Science

Medical care designed for the demands of the equestrian lifestyle

In the world of equestrian sport, every moment counts in the ring, in the barn, and beyond. Riders, trainers, grooms, and their families dedicate themselves entirely to performance, care, and precision. Yet, amid the daily demands of competition, it is easy to forget the most vital element of long-term success: health.

At Ringside Health, we believe preventive medicine and personalized wellness are not luxuries, they are essentials at every stage of life. Having access to an onsite medical clinic at Wellington International ensures that our entire community can thrive, recover, and perform at its best while staying one step ahead of illness and injury.

Wellness Through the Ages

Health needs evolve with time. The young athlete requires physical conditioning, nutrition support, and early screening for injuries that can shape their career. The adult competitor and trainer must focus on metabolic health, hormone balance, and cardiovascular fitness to ensure that years in the sport are matched by strength



and endurance. Meanwhile, parents, staff, and family members benefit from proactive care that prevents chronic disease and supports energy, focus, and longevity.

Preventive medicine is not only about avoiding illness; it is about optimizing performance and quality of life. Annual wellness exams, lab screenings, and metabolic assessments detect early warning signs of imbalance long before symptoms appear. From managing stress and sleep to addressing joint inflammation or fatigue, proactive care allows each individual to perform in and out of the ring at their absolute best.

A Modern Approach to Wellness

Today's medicine must evolve alongside today's lifestyles. Our concierge medical memberships at Ringside Health bring the physician-patient relationship back to what it should be: accessible, individualized, and deeply connected. Members enjoy 24/7 access to their physician, seamless coordination of care, preventive health planning, and personalized wellness programs that include

metabolic resets, hormone optimization, and performance optimization.

Whether at home or onsite at the show, Ringside Health offers continuity of care across all 50 states, combining the convenience of telemedicine with the reassurance of an established medical team physically present at Wellington International. For our athletes and their families, that means a trusted physician is always close by, ready to manage everything from urgent issues to long-term wellness strategies.

Immediate Access. Lasting Impact.

Having an onsite medical clinic at Wellington International transforms the way healthcare is delivered within our community. Acute care for injuries, infections, or dehydration can be provided immediately, minimizing downtime and preventing complications. Onsite diagnostic testing, imaging, and lab work eliminate the need to leave the showgrounds, while direct communication with local specialists ensures smooth, coordinated treatment plans when needed.


For grooms and support

staff, this access is invaluable. They are the backbone of the sport, often working long hours in the sun and managing physical labor that demands strength and endurance. Ringside Health's presence ensures every member of the equestrian community, not just the competitors, receives the care they deserve.


A Healthier, Stronger Community

When preventive medicine meets accessibility, communities flourish. With Ringside Health onsite, riders and families gain more than just a clinic; they gain peace of mind, knowing that quality medical care, trusted physicians, and personalized wellness support are only steps away. Our mission is to create a culture of health within the equestrian world that values prevention as highly as performance.

Ringside Health remains proud to serve the Wellington community, offering a model of care that blends the science of modern medicine with the heart of compassionate service. Because when health comes first, everything else follows.



Preventive medicine is not only about avoiding illness; it is about optimizing performance and quality of life.



Ellen Crown,
Healthcare Advocate & Philanthropist

Discover more at
lugarodiamonds.com





Simply One of a Kind

LUGANO

RIISING STAR:

Q&A with Pony Rider Cisy Zhou

By Grace Klement

Rising star Cisy Zhou claimed the title of the 2025 Marshall + Sterling/USEF Pony Medal Final aboard "Editorial," becoming the youngest rider to ever win the class at just 10 years of age. Riding under Andre Dignelli at Heritage Farm, Cisy is quickly leaving her mark on the equestrian world, one pony at a time.

How did you get into riding?

AI was introduced to horseback riding through a family friend. Something just clicked, and I fell in love with it! When I was 7 years old, I got more serious with my riding and began training with Heritage Farm. That was a big turning point for me.

You've competed at numerous venues across the nation.

What do you love most about competing at the Winter Equestrian Festival?

AI love competing at WEF, because it's a time of year when you see all your friends, and you also compete with some new people. I love Saturday Night Lights, too! Not only is it a fun time, but I also learn a lot by watching the riders in those classes.





You just took the title in the Marshall + Sterling/USEF Pony Medal Final and the Small/Medium Pony Jumper National Championship. What is one accomplishment you are proud of?

I think my biggest accomplishment would be winning the Marshall + Sterling/USEF Pony Medal Final this summer at Pony Finals. I became the youngest rider to win the class at 10 years old. I share the title with another former Heritage Farm rider, Maggie McAlary, who went on to be very successful in the equitation and reached the Grand Prix level of the sport.

Who is your biggest inspiration?

A My family and everyone at Heritage Farm are a big part of my career as a rider, and they're always there for me.

What are your future riding goals?

A A big goal of mine is to win at least one major 3'6" Equitation Final. I also aspire to go to the Olympics and compete in the Individual Jumping Final.

Do you have a special snack your ponies and horses love best?

A I usually give my ponies carrots, because they are a healthy snack, but sometimes at big shows I also give them peppermints. I am very grateful for what my horses and ponies do for me, and I try to always show my appreciation for them.



PHOTOS © CATIE STASZAK MEDIA





Measured by the
purest of passions,
our love for horses.

horseware.com |    



A woman with brown hair tied back, wearing a red quilted vest over a green long-sleeved shirt, blue jeans, and brown boots, is crouching down to examine the lower leg of a brown horse. The horse is standing in a stable aisle, facing left, and is wearing a brown leather halter with gold-colored buckles. The stable has a wooden ceiling with exposed beams and a concrete floor. In the background, there are stable doors and windows.

3 FACTS VETERINARIANS WISH YOU KNEW ABOUT DJD

Get a better understanding of degenerative joint disease (DJD) and how you and your veterinarian can work together to help manage the disease in your horse.

Degenerative joint disease (DJD) is a major cause of equine lameness.¹ To help keep more horses moving, American Regent Animal Health, maker of Adequan i.m.[®] (polysulfated glycosaminoglycan), talked to a group of leading equine veterinarians. Here are their top insights about DJD.

1.

Equine DJD, commonly called osteoarthritis, may cause lameness in horses of all ages and breeds. It is characterized by progressive deterioration of the articular cartilage along with changes in bone and soft tissues of the joint.¹

Veterinarians diagnose DJD, in part, by looking at radiographs. Dr. Kyla Ortved, the Jacques Jenny Endowed Term Chair of Orthopedic Surgery at the University of Pennsylvania's New Bolton Center, said she sees a lot of pre-purchase X-rays from people looking to buy young horses. "I'm finding that a lot of those pretty young horses have radiographic changes," Dr. Ortved says.

2.

A proactive joint-health approach for the average performance horse should include twice-a-year lameness exams and hoof radiographs to guide the farrier, according to Dr. Kent Allen, owner of Virginia Equine Imaging and a founder of the International Society of Equine Locomotor Pathology. Because DJD gets worse over time, it's important to manage it

early in the disease process when treatment is most effective for horses. "You're going to be able to [help] them. They're going to be successful at their job, and they're going to keep doing the job," Dr. Allen said. "And that's where I've focused my efforts on use of Adequan i.m. (polysulfated glycosaminoglycan) and I've found it very successful."

3.

As the only FDA-approved PSGAG (polysulfated glycosaminoglycan) for DJD in horses, Adequan i.m. actually treats the disease, not just the clinical signs.^{2,3} It has been proven to reduce inflammation, restore synovial joint lubrication, repair joint cartilage and reverse the disease cycle.^{2,3}

Alternatively, joint supplements and nutraceuticals are not regulated by the FDA. That means manufacturers are not required to prove safety or effectiveness, nor are they required to verify ingredient makeup or manufacturing processes.

FDA approval is important to Dr. Robin Dabareiner, who worked at Texas A&M University for 23 years before working at Waller Equine Hospital in Texas. "I try to talk to clients, telling them I feel it's a bigger bang for your buck if you go with the intramuscular Adequan [than unproven supplements]," Dr. Dabareiner said.



BRIEF SUMMARY: Prior to use please consult the product insert, a summary of which follows: **CAUTION:** Federal law restricts this drug to use by or on the order of a licensed veterinarian. **INDICATIONS:** Adequan i.m.[®] is recommended for the intramuscular treatment of non-infectious degenerative and/or traumatic joint dysfunction and associated lameness of the carpal and hock joints in horses. **CONTRAINDICATIONS:** There are no known contraindications to the use of intramuscular Polysulfated Glycosaminoglycan. **WARNINGS:** Do not use in horses intended for human consumption. Not for use in humans. Keep this and all medications out of the reach of children. **PRECAUTIONS:** The safe use of Adequan i.m.[®] in horses used for breeding purposes, during pregnancy, or in lactating mares has not been evaluated. For customer care, or to obtain product information, visit www.adequan.com. To report an adverse event please contact American Regent, Inc. at 1-888-354-4857 or email pv@americanregent.com.

Each of the veterinarians who participated in this article is a paid consultant for American Regent Animal Health.

Trademarks are the property of their respective owners.

© 2023, American Regent, Inc.
PP-AI-US-0680

1. McIlwraith CW, Frisbie DD, Kawcak CE, van Weeren PR. Joint Disease in the Horse. St. Louis, MO: Elsevier, 2016; 33-48.

2. Adequan[®] i.m. (polysulfated glycosaminoglycan), Package Insert. American Regent, Inc..

3. Burba DJ, Collier MA, DeBault LE, Hanson-Painton O, Thompson HC, Holder CL: In vivo kinetic study on uptake and distribution of intramuscular tritium-labeled polysulfated glycosaminoglycan in equine body fluid compartments and articular cartilage in an osteochondral defect model. J Equine Vet Sci 1993; 13: 696-703.


2026 COVER ARTIST: NATALIE SUTO



Through the lens of

NATALIE SUTO

Natalie Suto has been photographing the equestrian world since 2015, building a reputation for her ability to capture the athleticism and authenticity of the sport.

A small portrait of Natalie Suto, a woman with long dark hair, smiling and holding a camera.

Originally from Marietta, Georgia, she first developed an interest in photography through her mother, a professional wedding photographer. Her passion for horses began with a childhood wish for a pony under the Christmas tree, which instead led to riding lessons. Over time, her love of riding and photography merged, forming the foundation of her career in equine photography.

Her early experience photographing friends at local barns quickly turned into a professional pursuit. She began shooting regularly at Wills Park and Chattahoochee Hills, before expanding her work to cover major competitions across the United States and Europe. Her growing portfolio includes events such as the Kentucky Three-Day Event, Mondial du Lion, Les 5 Étoiles de Pau, and the Longines Pfingst Turnier Wiesbaden.



Although she has photographed a wide range of subjects, including concerts and other sports, her primary focus remains on horses. Her goal is always to capture the authenticity of the moment. Unlike other subjects, working with horses requires constant adaptation to capture them in a way that highlights both their athleticism and grace. She mentors aspiring equine photographers and encourages collaboration within the community, emphasizing the value of

(continued page 58)



shared knowledge and teamwork in a competitive field.

Her work has taken her to the Winter Equestrian Festival (WEF), where she documents some of the highest levels of show jumping competition in the world. The preparation for a season at WEF begins well before the first class, involving detailed planning of schedules, equipment, and client coordination. With classes running simultaneously across multiple rings, the job requires precision, communication, and constant adaptability to changing conditions such as weather and lighting.

Among her most notable images is a photograph of Mimi Gochman and Cosmos BH, taken during the Lugano 5* Grand Prix at Wellington International. The image, which is the 2026 WEF Souvenir Program cover, was captured during Saturday Night Lights, one



of the most anticipated events of the WEF circuit. The photo depicts horse and rider suspended midair, as though the pair is soaring across the night sky.

Her photographic style reflects a balance of timing, light, and composition. Over the years, she has drawn inspiration from

other leading equine photographers, including Nicole Schultz and Giana Terranova, whose approaches to framing and emotion have influenced her development. While every photographer brings a different method to the sport, she has refined her own process to emphasize

(continued page 60)



crisp, dynamic imagery that represents the harmony between horse and rider.

In recent years, she has expanded into motion content, incorporating slow-motion videography into her coverage. The growing use of high-speed video and drone work has changed how equine photography is presented, offering new opportunities to show the sport in a more immersive way. She notes that these technologies have become especially relevant for riders and brands seeking engaging, short-form content for social media.

Outside of work, she continues to ride and show under Amelia Nowicki at Hidden Valley Farm in North Carolina. Staying involved in the sport firsthand, she says, gives her a better understanding of what riders value in imagery and helps her anticipate the rhythm of competition.

Natalie Suto has established herself as part of the growing generation of equine photographers redefining how the sport is documented. Her mix of technical skill, consistency, and hands-on understanding of the equestrian world has made

her a trusted name at top venues across the country. Looking ahead, she plans to continue covering large-scale competitions, including the upcoming 2026 Winter Equestrian Festival, while also broadening her portfolio to include more commercial and editorial work.





VOGEL

NEW YORK 1879

BRAINJAVA



COMPTON
COWBOYS

FEATURING...

COMPTON
COWBOYS



MAJOR SPONSOR



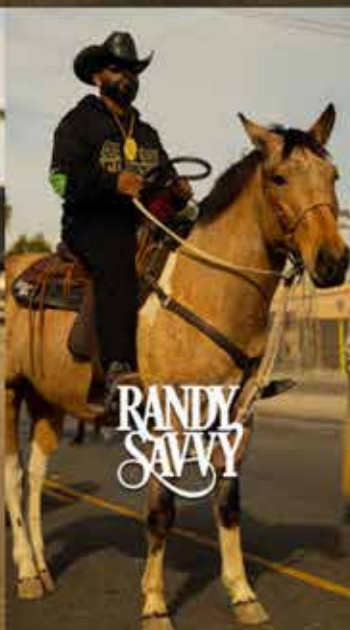
Wellington
International



PROUD SPONSOR



WINTER
EQUESTRIAN
FESTIVAL



RANDY
SAVVY





SKYLAR WIREMAN

and Riding for the Red, White, and Blue

By Grace Klement

Young professional Skylar Wireman is coming in hot this year at the Winter Equestrian Festival. After tremendous success in the equitation ranks during her junior years, she has continued the trend as a young professional in the jumper ring. Her most recent accolades include being a double gold medalist at the 2025 North American Youth Championships Young

Rider Finals and Team Gold at the Youth Nations Cup Finals in Lier in 2025.

This winter, Skylar looks forward to competing at the Winter Equestrian Festival. After spending numerous seasons in Wellington, Skylar remarks on the diversity of the showgrounds, saying, "I have competed in the hunters and the equitation at the Winter Equestrian Festival, and I love that we get to ride in so many different rings".

Skylar has accumulated numerous top-placings in the equitation ring throughout her junior years, but Wellington's iconic International Ring will be one she will always remember. Remarking on the time she competed in the WEF Equitation Championship, a night class that welcomes equitation riders to test their skills under the lights, Skylar states "[the] WEF Equitation Championship under the lights in the Grand Prix ring is a very special feeling on such a big stage—it is always turned out beautifully."

Competing at cornerstone equitation finals is something Skylar is very familiar with. During her junior years, Skylar amassed an impressive list of accomplishments, including winning the 2020 Platinum Performance/USEF Show Jumping Talent Search Finals – West aboard Hot Pants and the 2022 USHJA Gladstone Equitation Cup Final – West with Famous. She also secured Champion and Reserve honors in the 2022 World Equestrian Center Premier Equitation Cup Final with Charisma, and capped off the year by winning 2022 Dover Saddlery/USEF Hunt Seat Medal Final with Famous.

Now transitioning into her professional career, Skylar shares how the pressure of equitation finals helped set her up for the jumper ring. "My success in the equitation definitely gave me the confidence to be able to conquer these bigger 5* classes because through the finals you learn to deal with the pressure of being in the tests and sitting in the top group."





© HELEN CRUDEN

“The equitation helped through learning the precision of control of track, I’ve learned that many of these bigger [jumper] tracks are essentially an equitation course just at 1.60m instead of 1.10m.”

In her first year as a professional, Skylar won her first National Grand Prix. Later, Skylar went on to take top honors in the \$250,000 Longines FEI Jumping World Cup™ CSI-5* and later capping her first year as a professional with her

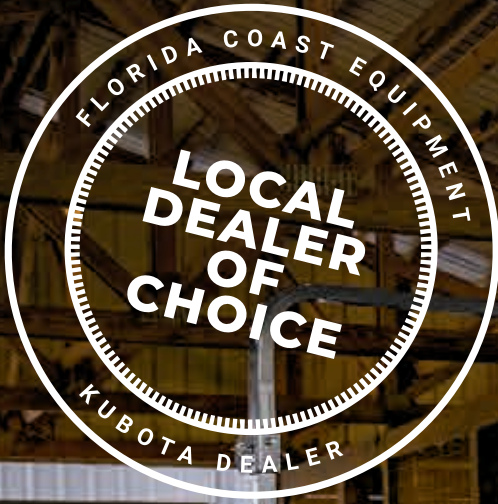
first 4* World Cup Qualifier win.

Outside the ring, Skylar trains and manages Chestnut Hills Farm with her sister, Shayne. Although a young professional, Skylar shares the challenges of running a successful program while showing multiple tours. “My life is all about horses, it’s what I do for a living. I juggle the scheduling and planning, managing the ones at home as well as my horses that are traveling.”

Skylar has always embraced the team aspect of the sport, having competed on several throughout her career. She currently rides for Team

USA on the Youth Jumping Nations Cup Team and represents the “Rainmakers” in Major League Show Jumping. Additionally, she was selected to ride for Team USA in the FEI Longines League of Nations™ Abu Dhabi CSI 5*. Saying, “I have always loved the team component to this sport and feeling that importance that every score counts and as a team we have to work together to win big events for our home nation.”

Skylar’s future goals are to one day represent the United States in the Olympics and compete on Senior Nations Cup teams.



L2502

**A PROUD SPONSOR OF
WELLINGTON INTERNATIONAL**

FLORIDACOASTEQ.COM



Kubota

**FLORIDA COAST
EQUIPMENT**

SPONSOR PROFILE: LÖVSTA FUTURE CHALLENGE

A full-page photograph of a rider on a chestnut horse, captured in a dynamic pose during a cross-country event. The rider is wearing a dark blue jacket, white breeches, black boots, and a black helmet. The horse is in motion, with its front legs tucked. The background is a bright, slightly blurred outdoor setting.

LÖVSTA FUTURE CHALLENGE

Winner of Lövsta Future Challenge 2024, Philip McGuane and My Lady van de Krekel



LÖVSTA FUTURE CHALLENGE CONTINUES TO SUPPORT UP-AND-COMING HORSES IN DRESSAGE AND JUMPING

Lövsta Future Challenge is proud to continue their series in the United States, supporting young horses to reach their full potential in both dressage and jumping.

For the second season, Lövsta Future Challenge is presenting a \$3,000 Groom's Award for each discipline, given to the grooms of the top three placed combinations in each final.

FROM SWEDEN TO THE REST OF THE WORLD – THE JOURNEY OF LÖVSTA FUTURE CHALLENGE

Founded in 2011 by icons Tinne Vilhelmson Silfvén and Louise Nathhorst, with the support of Antonia Ax:son Johnson, Lövsta Future Challenge was created to advance Sweden's standing in the equestrian world while serving as a model of sustainable competition. Over a decade later, this vision has grown internationally. Lövsta Future Challenge now includes national tours in Sweden for U25 riders and young horses in dressage and jumping, along with international events around Europe.

Since its U.S. debut in 2020, the series has seen more than 500 horses representing over 20 nations compete in Wellington. Several participants have gone on to international Grand Prix, for example Jennifer Williams and Joppe K and Marcus Orlob with Jane, members of the U.S. Olympic team in

Paris 2024. These results reflect how the program's mission — to bridge the gap between developing and elite sport — is truly working in practice

LÖVSTA FUTURE CHALLENGE DRESSAGE IN WELLINGTON

The Lövsta Future Challenge Dressage – USA is about to enter its seventh season, offering a tour for young Grand Prix horses (from 8–11 yo) with five qualifiers in Wellington. The top two riders from each qualifier will secure one of the highly sought-after spots in the finale during week 11. The qualifiers will be held in Intermediate II and the final in Grand Prix for Young Horses. With \$15,000 in total prize money and no entry fees, Lövsta continues to support the riders and teams around them.

JUMPING INTO 2026: LÖVSTA FUTURE CHALLENGE VISION FOR FUTURE SHOW JUMPING STARS

The Lövsta Future Challenge Jumping tour provides seven-year-old horses the chance to gain invaluable experience in a competitive environment. This upcoming season, the tour will host seven qualifiers

(continued page 70)

GE

© CASSIDY KLEIN



**Winner of Lövsta Future Challenge Dressage
Brittany Fraser Beaulieu
with her groom together
with Antonia Ax:son
Johnson, Lövsta Stuteri**

throughout the Winter Equestrian Festival circuit, culminating in a grand finale at Wellington International with \$25,000 in prize money.

Reflecting on last year's season, Sophie Mörner, founder of Lövsta Future Challenge Jumping US, says:

"We were thrilled about the outcome of last year's season. With over 200 entries from more than a dozen nationalities, we saw how crucial it is to put future stars into the spotlight. By giving them the opportunity to compete at Wellington International, we hope to equip them with the experience they need for a successful future."

That vision is already paying off — former winners such as Pablo C and Charlotte Jacobs have competed to internationally up to 1.50m-level, while 2024 champion My Lady van de Krekel went on to win CSI3* and CSI2* Grand Prix classes during the 2025 season.

HONORING HORSEMANSHIP AND GIVING BACK TO THE COMMUNITY

Beyond competitive success, Lövsta Future Challenge remains deeply committed to sustainability, horsemanship, and community. One example of this commitment is the ongoing collaboration with Vinceremos Therapeutic Riding Center, a facility that among other things provides equine-assisted therapy for people with disabilities. For the 2026 season, Lövsta Future Challenge will donate \$100 for each participant in its U.S. events to Vinceremos, helping to support its life-changing programs for people of all ages.

"It's equally important for us to look beyond the arena to places where these incredible animals bring joy, healing, and hope in ways that far surpass medals or trophies," Johnson concludes.

"We're delighted to support the sport here in Wellington and to continue our commitment to the most essential part of our sport—the grooms. These dedicated caretakers are the ones who look after the most valuable part of our sport, our wonderful horses,"

— Antonia Ax:son Johnson, founder Lövsta Future Challenge and owner Lövsta Stuteri.



A BETTER WORLD FOR HORSES, PETS AND PEOPLE



WWW.MARSEQUESTRIAN.COM @MARSEQUESTRIAN

BRAINJUICE®

**FOCUS, CLARITY, MOOD & CONCENTRATION ARE NOT JUST “HOT TOPICS.”
THEY ARE ESSENTIAL PILLARS OF BRAIN HEALTH.**

BRAINJUICE is the #1 natural daily brain supplement and functional beverage company, offering products scientifically designed to support overall brain function. BRAINJUICE, BRAINJAVA and BRAINWATER promote daily rejuvenation, functional development and whole-body wellness.

Every product begins with BRAINJUICE's BRAINPOWER BLEND of nutrients. This proprietary blend includes 100% natural vitamins, minerals and amino acids that support long-term brain health and daily brain performance.

The public trend of “brain health surge” is reflected in recent findings. The November 2025 study in the journal, *Neurology*, reported an alarming increase of memory and thinking problems among U.S. adults under the age of 40. The study found that cognitive disability in adults ages 18 to 39 has nearly doubled over the past decade. The largest increases were seen in individuals within this age group who have unhealthy diets coupled with lower income levels and lower levels of education.

Neurological phenomenon described as “surges” are considered unexpected spikes in mood, lucid clarity and energy. While there is so much that needs to be studied, it is known that “anxiety-related brain surges” are disruptive episodes in the brain that can involve sudden, unexplained rushes of distressing symptoms.

Body and mental stress cause overstimulation of the nervous system and shifts in neurotransmission levels that create the feeling of a surge or electrical shock. Triggers include panic attacks, withdrawal symptoms and depression.

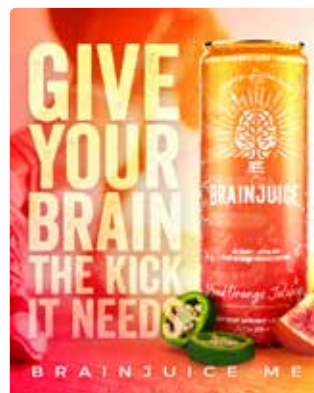
Many energy drinks, shots, and sports beverages advertise vitamins in their products that promote a healthy brain, but these drinks add synthetic vitamins that can be harmful. Synthetic vitamins are cheaper, which is why so many products use them. Synthetic vitamins combined with high doses of sugar, sodium and lab-made synthetic caffeine create a very unhealthy option for energy. Non-genetically modified, naturally sourced ingredients are far superior to synthetics claiming to be healthy.

BRAINJUICE, BRAINJAVA and BRAINWATER encourage you to prioritize self-care for your brain power and mental health. All our products are 100% natural and contain organic superfoods, vitamins, minerals, and amino acids in every formula. Each product is scientifically designed to provide clean brain energy, enhancing focus, concentration, performance, calmness, clarity, mood, and memory. START YOUR DAY THE RIGHT WAY FOR A COMPETITIVE MIND SET!

Equestrian sports are perfect for “Starting Your Day the Right Way.” Getting natural sunlight and physical activity, powered by nature, is perfect for your brain health and combating brain fog!

Athletes often face mental and physical stressors that can affect focus, concentration and overall performance.

Hydrating with water powered by vitamins and eating a nutritious breakfast with ingredients such as eggs & berries promote mental clarity. You can also support your brain with BRAINJUICE 2.5 oz ready-to-drink shots, or BRAINJUICE daily brain power mixes added to your water, tea or a smoothie. Whatever your preference, you need water and natural nutrition for your brain to overcome brain fog!

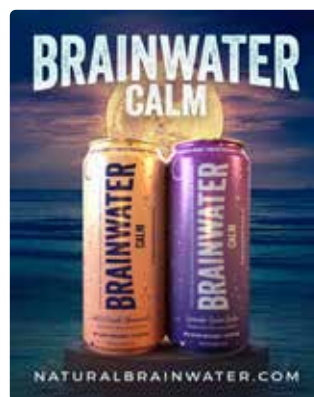


Q1: WHY ARE SPORTS NUTRITION & BRAIN HEALTH SYNONYMOUS?

A: Whether you are an athlete or simply lead an active lifestyle where fitness is central, your brain has unique nutritional needs. The brain functions on superfoods and clean nutrition to fuel neurotransmission throughout the organs, body and muscles. This essential fuel enables your brain to perform at its best, driving you through even the most challenging days.

BRAINJUICE ACTIVE and BRAINWATER ACTIVE are specifically designed for athletes and active individuals. These products feature BRAINJUICE'S proprietary BRAINPOWER BLEND of vitamins and nutrients formulated to enhance reaction time, reflexes, focus, clarity, concentration, decision-making and overall brain performance.

BRAINJUICE ACTIVE & BRAINWATER ACTIVE provide clean, effective nutrition tailored to support the demands of a sports active lifestyle and the brain & mental health needs.



Q2: HOW MUCH WATER DOES MY BRAIN NEED?

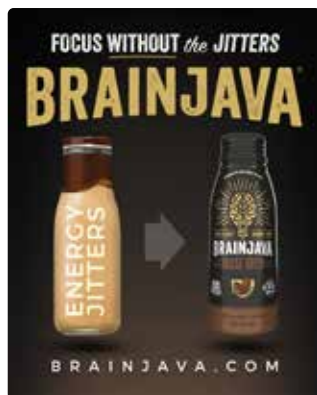
A: Your brain needs water more than anything. Comprising 75% water, the brain relies on proper hydration to support cognition, memory and overall brain health. The Earth is made up of roughly 71% water, found in oceans, lakes and rivers.

The human brain and body are deeply connected to nature and the universe. Even slight dehydration can negatively affect both the planet and our

BRAIN HEALTH & CLEAN BRAIN ENERGY ARE OVERALL HEALTH NEEDS!

brain's function, highlighting the importance of maintaining proper hydration. Water is essential not only for daily brain activity but also for rest and rejuvenation during sleep.

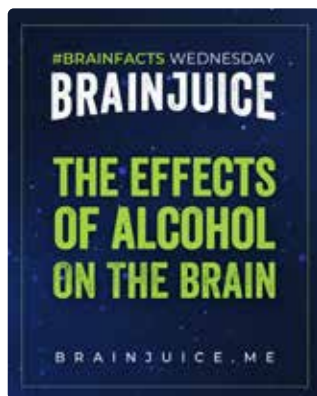
BRAINWATER is hydration designed specifically for your brain health. This 100% natural and functional water includes the proprietary BRAINPOWER BLEND of vitamins, minerals, and amino acids, enriched with botanicals, fruits, and antioxidants to provide additional healing properties for both the brain and body. BRAINWATER ACTIVE takes hydration to the next level, offering a fortified formula that supports clean brain energy while nourishing the brain and body throughout the day. With its ability to fuel neurotransmitter activity, improve cognition, and enhance brain function, BRAINWATER is an essential component of maintaining peak mental and physical performance.



Q3: HOW MUCH ENERGY DOES THE BRAIN USE EACH DAY?

A: Your brain uses approximately 20% of your total daily energy requirements, burning between 300 and 400 calories per day on average just to perform basic functions. For individuals such as athletes, business leaders, or those engaged in high-intensity mental activities, this number can rise significantly, with the brain consuming as much as

600 calories daily due to the cognitive demands placed on it. Energy needs increase further during activities like studying, problem-solving, learning new skills, or taking on creative and complex tasks. Abstract thinking and critical problem-solving raise the brain's metabolic rate, requiring even more energy to maintain peak performance. Brain health is vital to your overall well-being. It is directly tied to your ability to stay motivated, plan effectively and strategize in today's fast-paced world. Providing your brain with the proper fuel supports healthy brain function and performance.



Q4: WHAT ARE THE EFFECTS OF SUBSTANCES LIKE ALCOHOL OR NICOTINE ON THE BRAIN?

A: Alcohol is a widely enjoyed substance, whether it's a glass of wine in the evening or a cocktail before dinner. However, it is well-documented that alcohol interferes with the brain's communication pathways, affecting its ability to function properly. Its immediate effects can disrupt balance, memory, speech, and judgment. While

moderate consumption can often be managed with proper hydration and nutrients to support brain health, excessive alcohol intake poses serious risks, including permanent damage to the brain. High levels of alcohol consumption also increase the likelihood of injury and negative behavioral outcomes.

To minimize the impact of alcohol on the brain, it is essential to consume it in moderation. Supporting the brain with adequate hydration and a balanced intake of vitamins and nutrients is crucial for rejuvenation and maintaining

neurological function. Responsible choices can help protect brain health while still allowing for occasional enjoyment.



Q5: HOW CAN EQUESTRIAN SPORTS AND HORSES HAVE A POSITIVE IMPACT ON BRAIN HEALTH?

A: Scientists and researchers have used many techniques to study the reward hormones in the brain, and their relationships or influences over dislikes, stress management, addictions, learning, and memory. Nature and animals have a direct impact on good feelings, healthy habits, and cognitive processes. At the same time, humans with stress, anger or

an unhealthy chemical imbalance in the brain can cause stress and discomfort to animals and nature.

Animals, in particular horses and dogs, have a large impact on the human brain. Many parts of the brain such as the amygdala, which is responsible for emotional response and memories; the hippocampus, responsible for processing emotions and learning & prefrontal cortex, which is responsible for the management of planning, thinking, remembering, and self-control. Love provided by an animal, such as a horse, can have a profound effect on mental health. A healthy bond with your horse gives a feeling of belonging and purpose. Your horse is a mood booster that can help decrease anxiety, stress, and depression.

Over time, the hormones released in the brain from experiencing love can lead to positive behavioral and emotional changes. An unhappy horse is usually the result of it being in the care of unhappy people. Give you and your horse the love it deserves by focusing on your mental health, your brain health, and your overall health. This includes the mental well-being and overall wellness and happiness of everyone in contact with your horses. Unhappy people cause unhappy horses. Mental health is overall wealth.



Q6: HOW DOES A LARGER PURPOSE AND HELPING OTHERS GROW IMPROVE BRAIN HEALTH?

A: Helping others is linked to improved brain health by boosting cognitive function, reducing stress and increasing overall happiness. Social support activates the brain regions involved in caregiving. The positive neurobiological effects of caring for others, as well as receiving care, contribute to overall improved health outcomes.

To learn more about brain nutrition, or to contact us visit:

www.brainjuice.me
www.brainjava.com
www.naturalbrainwater.com



RÖWER & RÜB:

Creating the world's most inspiring equestrian spaces

“Our facility is an expression of our love for our horses and our desire to provide them with the best possible support and care. The beauty of Röwer & Rüb’s products and their functionality were decisive factors in our decision.”

— Carol Cohen-Hodess

For more than 150 years, Röwer & Rüb has stood for highest quality, uncompromising safety and beautiful design. As one of the world’s leading manufacturers of premium equestrian homes, the German company is known for creating stables that are far more than just buildings: they are a safe haven. Carefully planned, tailor-made, and constructed with passion and perfection, every project reflects the

brand’s dedication to horse well-being and German craftsmanship at its finest.

A heritage of excellence

Founded in 1867 as a small forge in Northern Germany, Röwer & Rüb has evolved into an international benchmark in stable outfitting. For more than four decades, the company has specialized in innovative equestrian architecture, supplying facilities across the world.

Though global in scope, the brand remains true to its roots: traditional handcraft, best-in-class materials and a deep respect for the needs of horses are still at the core of every project.

Today, the German brand represents a promise – to provide horses and humans with a space where they feel secure, calm and at home. This is reflected in every product: from customized

stable interiors to exercise equipment, grooming stations, and climate control systems. People who choose Röwer & Rüb commit to the most beautiful home for their precious horses. They choose trust.

Over the years, the company has introduced a number of product developments that have shaped the look and feel of equestrian facilities worldwide. Among them are some of the most prestigious and aesthetically remarkable stables in the world: from the historic Lipica Stud Farm in Slovenia to the ultra-modern Sono Felice Equestrian Club in South Korea.

Tailor-made luxury

At ROasis in Wellington, Florida, rider and sponsor Rowan O'Riley has realized her unique vision. The stable fronts Hannover were selected to mirror true sophistication. Stainless steel elements, forged in Germany, remain reliable even after decades. The thermally treated bamboo doesn't splinter and is not only resistant to kicking and biting, but is also known

as an ultra-stable wood alternative. Even wash and grooming areas are designed for maximum efficiency, combining technical innovation with timeless aesthetics.

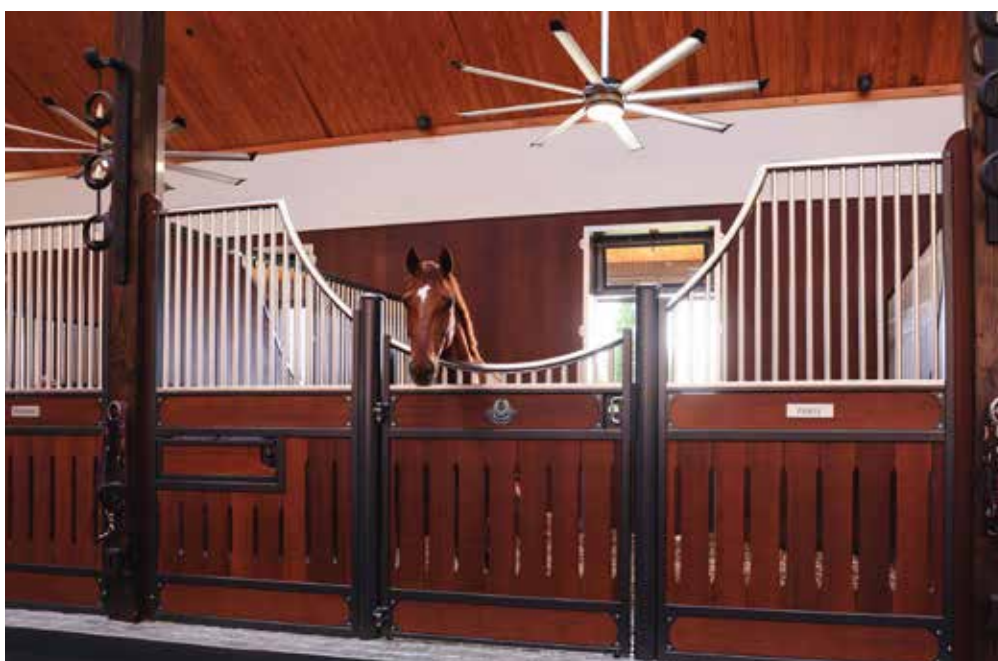
"I love the durability and performance of the Röwer & Rüb stalls. And I made sure to order my stalls with stainless steel hardware

because it's so easy to clean and always looks beautiful," Rowan O'Riley says.

Harmony between horse and human

Similarly, at 3 Graces Dressage, another Wellington-based facility, Carol Cohen-Hodess and

(continued page 76)



her daughter Rebecca Cohen partnered with the German company to create a space that serves both as a high-performance training center and as a sanctuary. Every aspect of the property reflects their commitment to the emotional and physical well-being of their horses.

Key features: The Bremen horse stable fronts with their open, airy design, allowing horses to perceive their surroundings and communicate. Or the award-winning R&AIR system, which contributes to climate control and significantly improves

air quality. Every detail supports the well-being of the horses. With its precision-engineered details and quiet luxury, the facility is a tribute to the harmony between horse and human.

Or, in the words of Carol Cohen-Hodess: “Our facility is an expression of our love for our horses and our

desire to provide them with the best possible support and care. The beauty of Röwer & Rüb’s products and their functionality were decisive factors in our decision.”

Where tradition meets vision

What unites these projects is the shared





philosophy behind them. Each facility is the result of a close dialogue between vision and execution — and personal consultation is a standard. Clients around the world are supported by dedicated representatives who work hand in hand with the design and production team in Germany to ensure seamless project realization.

The result: spaces that not only meet today's demands but are ready for tomorrow. Built with care

and made to last. Each and every one of these projects fills its owners with joy and pride and will bring joy for generations to come.

Navigating import logistics

Customized service doesn't end with advice on horse stalls. Planning a premium equestrian facility in the U.S. involves more than just choosing world-class craftsmanship; it also requires clarity around international import logistics. That's why Röwer & Rüb closely

monitors all trade developments and works directly with experienced logistics and customs partners to ensure a smooth and transparent import process.

From the initial planning to final delivery, the German company provides reliable guidance and clear communication — so clients can focus fully on bringing their vision to life.

Passion for horses has a home

To this day, Röwer & Rüb continues to shape the future of equestrian architecture without losing sight of what truly matters. Horses. People. Craftsmanship. And the spaces where they come together.

By blending tradition with innovation and

personal vision with technical expertise, Röwer & Rüb builds places that are more than structures. They are statements. And they are, above all, homes. Because each and every one of them was developed and realized with horses in mind.

The most beautiful home for every horse. Made in Germany.

U.S. CONTACT:
Jeremy LeBlanc
Sales & Service Mgr. USA
(561) 917 3239
j.leblanc@roewer-rueb.com
www.roewer-rueb.com

When spectators watch British Olympic Champion Ben Maher soar over massive fences on the world stage, the spotlight naturally falls on horse and rider. Yet behind every polished round and gold medal moment is a team member whose work rarely makes headlines. For Maher, that person is Derren Lake, a groom whose quiet dedication and decades of experience form the backbone of his success.

A Life Shaped by Horses

Lake's journey with horses began modestly. Unlike riders who grew up with ponies, his path was more practical than glamorous. He started out simply caring for horses, gradually learning how to handle them, travel with them, and prepare them for competition. What began as a job soon became a lifelong vacation.

Three decades later, Lake has built a reputation as one of the most respected grooms in the sport. His resume includes caring for some of Maher's greatest partners - horses like Explosion W, Dallas Vegas Batilly, and rising stars such as Point Break. Through it all, Lake has demonstrated the same core principle: the horse always comes first.

The Demands of the Role

The work of a top groom is as rigorous as it is invisible. For Lake, each day revolves around details that determine whether a horse feels confident enough to compete at the highest level. That means bandaging legs correctly, monitoring nutrition, keeping travel stress to a minimum,

DERREN LAKE:

The Steady Hand Behind Ben Maher's Success

By Cassidy Klein



© ROLEX/THOMAS LOVELOCK

and making sure the horses rest as well as they perform.

Show jumping may look glamorous from the stands, but Lake's life is built around long days, endless travel, and an ability to adapt. From flying horses across continents to navigating the

chaos of a five-star showground, his role requires both precision and calm under pressure.

Building Trust With Champions

Horses, like people, each carry their own quirks. Some are bold and

(continued page 80)



RANCHERO™ 27L BACKPACK

YETI®

fearless, others more sensitive and wary. Lake has learned to adapt his approach for each horse in Maher's string. A stallion like Point Break may need steady reassurance, while a seasoned campaigner like Explosion W thrives on routine.

That flexibility is one of Lake's greatest strengths. Horses, he believes, give their best only when they feel understood and secure. His ability to form those bonds is one reason Maher can ride into the ring with complete confidence.

Milestones and Recognition

Though grooms rarely step into the spotlight, Lake's contributions have been recognized. At the Winter Equestrian Festival in Wellington, he has received groom's awards that honor his

meticulous care. More significantly, he stood beside Maher on the podium at the Olympic Games, sharing in the team gold medal moment that capped years of hard work. For Lake, such recognition isn't about personal glory. It's about validation for the long nights, the endless flights, and the sacrifices that ensure Maher's horses are at their very best.

Philosophy and Perspective

Despite his decades of experience, Lake remains a student of the sport. He often says that horses teach you something new every day. That humility, paired with his relentless attention to detail, makes him an anchor in Maher's operation. He describes the horses as "our babies," a phrase that captures both affection and responsibility. To him, success is not about one rider or

one result but about a team that puts the horses' welfare first.

Looking Ahead

As Maher continues to target the sport's biggest prizes, from Grand Prix victories to future Olympic Games, Derren Lake remains at the heart of the journey. His presence brings stability to a high-pressure environment, and his knowledge ensures that each horse is prepared to deliver its best.

Show jumping may crown champions in the ring, but those victories are built in the quiet moments, when a groom like Derren Lake is wrapping legs, checking feed, or calming a horse before a flight. For Ben Maher, having Lake by his side isn't just an asset. It's essential.



CHROME HORSE

SOCIETY®

TEQUILA

TEQUILA REDEFINED

THE OFFICIAL TEQUILA OF THE
2026 WINTER EQUESTRIAN FESTIVAL



WWW.CHROMEHORSESOCIETY.COM

IMPORTED BY PARK STREET LIQUORS NEW YORK, NY | 80 PROOF
21+ TO DRINK RESPONSIBLY © 2025





WELLINGTON QUARTERLY MAGAZINE

The Equestrian World's Definitive Lifestyle Journal

Firmly planted in the winter equestrian capital of the world, *Wellington Quarterly Magazine*, published by Vivant Media, captures the elegance, grit, and grandeur of a life lived both in the saddle and beyond the stables. WQ has established itself as the definitive guide to the high-end lifestyle that defines Wellington and Palm Beach. Issued four times per year, this quarterly publication is as much a collector's item as it is a magazine, curating the best of equestrian sport and the luxuries that orbit it, with exceptional photography and editorial content.

At its core, *Wellington Quarterly* is devoted to the three disciplines that define the area's international reputation: show jumping, dressage, and high-goal polo. In every issue, WQ profiles one of the sport's leading figures, be it Olympians, Grand Prix champions, dressage icons, or the titans of polo, delivering not just results and headlines, but rich narratives of training, triumph, and legacy. Readers can expect beautifully shot

photography from the arena and stables, paired with in-depth interviews that reveal the personalities behind the polished boots and gleaming horses.

Unlike others, *Wellington Quarterly* frames equestrian competition in the context of culture and lifestyle. It understands that a weekend spent ringside at Wellington International or field-side at The National Polo Center is not simply about watching horses, it's about the rituals, relationships, traditions, and luxuries that define the sport. The publication serves as a lifestyle companion for the discerning reader. Its glossy pages move effortlessly from coverage of FEI-level competitions to the refined pleasures that define Wellington and Palm Beach life.

LUXURY TRAVEL

From Mediterranean villas to Aspen chalets, the magazine explores destinations favored by jet-set equestrians when they dismount and depart.

FINE DINING

Features spotlight both local institutions—Palm Beach's iconic restaurants

and Wellington's hidden gems, as well as global culinary destinations.

WELLNESS

In keeping with the demands of equestrian sport, the magazine delves into cutting-edge fitness, spa retreats, and holistic therapies.

TIMEPIECES & JEWELRY

A focus on horology and jewelry ensures that the magazine appeals to collectors who appreciate craftsmanship and heritage, with features written by leading authorities in this space.

FASHION FOR HIM & HER

From couture gowns to bespoke riding jackets, *Wellington Quarterly* presents fashion as both an expression of personal style and a reflection of equestrian elegance.

Further cementing its role within the equestrian world, *Wellington Quarterly* proudly serves as a Media Sponsor at Wellington International, one of the sport's most prestigious venues. This partnership allows the magazine to remain at the forefront of competition coverage

while reinforcing its deep connection to the community it celebrates. The collaboration ensures readers enjoy privileged access to the pulse of equestrian sport with its triumphs, trends, and unforgettable moments. For visitors, WQ is a guidebook to a lifestyle that blends the sporting spirit with refinement. For residents, it is a mirror reflecting their world—exclusive, international, and steeped in tradition, yet always evolving. With its quarterly cadence, WQ respects the art of anticipation. Each issue is meticulously crafted, offering content that feels timeless yet relevant, seasonal yet enduring. Published by Vivant Media (WQ, Vivant and Delamar) the magazine embodies the publisher's commitment to excellence, storytelling, and design, ensuring that it not only informs but inspires.

More than a magazine, WQ is the curated voice of equestrian luxury, celebrating the horses, the people, and the lifestyle that make Wellington unlike anywhere else in the world.

WELLINGTON QUARTERLY

QUINTESSENTIAL STYLE



Proud Media Sponsor of WEF 2026

@wellingtonquarterlymagazine

www.wellingtonquarterlymagazine.com



SADDLE TRAIL • \$21,500,000

Steps Away From The Horse Show • Stunning Architecture Designed for Privacy and Practicality • Spanish Bungalow Home Features Pool, Spa and Outdoor Terrace • Custom 28-Stall Center Aisle Barn • 2 Full Tack Rooms • Numerous Wash Stalls • Large Lounge With Kitchen • Owner's Office With Spacious Balcony and Outdoor Fireplace • Expansive All-Weather Arena • 2 Storage Buildings Offer 6 Garages • 2-Bedroom Apartment With Porch • 8 Spacious Shaded Paddocks



GRAND PRIX VILLAGE • \$17,000,000

Exceptional 5.88-Acre Equestrian Training Facility • Direct Access to Wellington International Showgrounds Via Private Gate • Luxurious 2-Bedroom, 2-Bath Owner's Quarters • Private Office and Lounge • 3-Bedroom, 2-Bath Staff Accommodation • 16-Stall Barn • Tack and Feed Rooms • 4 Wash Stalls • State-Of-The-Art All-Weather Ring • Grass Grand Prix Field and All-Weather Training Track • 5 Paddocks and Lunging Ring • Rare Gem in the Heart of Equestrian Excellence!

MARTHA W. JOLICOEUR

FARMS & ESTATES

WELLINGTON, FL



SADDLE TRAIL • \$7,450,000

Stunning Custom-Built 4-Bedroom, 3.5-Bath Pool Home • High-End Appliances • Lanai With Travertine Flooring • 16-Stall Barn Features 2 Tack Rooms, 2 Feed Rooms and Laundry • 5 Paddocks and Round Pen • Fiber Arena by Drew Dirtworks • Storage Garage • 2-Bedroom, 1-Bath Apartment With Kitchen



NEW LISTING

GRAND PRIX VILLAGE SOUTH • \$6,500,000

Rare 4.38-Acres in Grand Prix Village South • Beautifully Landscaped • State-Of-The-Art All-Weather Arena • 8 Lush Grass Paddocks • Grooming/Wash Stalls • Westerly Views • Ideal Canvas To Build Your Dream Facility • Easy Access to Wellington International Showgrounds and Scenic Trails



MARTHA W. JOLICOEUR, PA

Director of Luxury Sales
Equestrian Homes and Estates of Distinction
561 797 8040
www.MarthasProperties.com





**GOLD
COAST
FEED**

When Speed Counts

Offering daily deliveries to Wellington
International horse shows and local
Palm Beach County farms.

Call to schedule your order today
561.793.4607

or order online at
goldcoastfeed.com



Conceptual Rendering

Join Us in Bringing Comprehensive Care to Palm Beach County

With the support of visionary donors in the community, we are planning the first new inpatient hospital in a century and quadrupling our outpatient footprint. Now is the time to learn more and get involved in the effort. **Together, we can make this vision possible. To find out more, visit Cle.Clinic/PB.**



Cleveland Clinic

*Elevating the
Healthcare Landscape*

The Campaign for Cleveland Clinic Palm Beach

Scan the
QR code to
learn more.



THE SPECTATOR'S GUIDE to Equestrian Competition

Grand Prix Show Jumping

Jumping is one of the three Olympic equestrian sports, along with Dressage and Eventing. As in all equestrian sports, men and women compete on equal terms. The Olympic sport of Grand Prix show jumping is the highest and most challenging level of jumping competition. Men and women compete over a set course of obstacles that can be as tall as 1.60 meters (5.25 feet) in height. They must clear all of the fences without knocking down a pole in order to return for the second round, also known as the "jump-off," and be the fastest with the least faults to win.

Guide to Scoring in Show Jumping

Penalties in show jumping competitions are referred to as "faults." Knocking down a rail or a pole on a jump is 4 faults, as is putting a foot in the water jump or the first refusal. In all jumper classes, falls and going off-course result in elimination, as does a second refusal.

PHOTOS © CASSIDY KLEIN



Show Jumping Faults and Penalties

Knocking over a jump: 4 faults
Refusing a jump: 4 faults
Two refusals: Eliminated
Rider falls off: Eliminated
Over the time allowed: 1 fault for every second over the time allowed



Hunters

Hunt seat competitions are based upon elegant traditions arising from the foxhunt. Hunters differ from jumpers because they are judged on the style, movement, and technical proficiency of the horse and rider within the constraints of the set course design. Hunters should display jumping ability, manners, style, an even pace, and quality.

(continued page 90)



World Class Arena Textiles

Proud Sponsor of
**Winter Equestrian
Festival 2026**

Where the World's Best Riders



Meet the World's Best Footing.

ARENA FOOTING TEXTILES • CONDITIONING GROOMERS

WATERFREE FOOTING • MATTING SYSTEMS



Contact: Cynthia Keating 864.804.0011



Equitation

Equitation competition is offered for junior and amateur riders and is judged based on the style and form of the rider. Horses are not judged in this discipline, but successful riders will ensure that their horses are well behaved. Riders can be judged over fences or on the flat.



FEI

Fédération Equestre Internationale is the international governing body for all Olympic equestrian disciplines based in Lausanne, Switzerland.

Concours Dressage International: CDI

An acronym for Concours Dressage International, a dressage competition recognized by the FEI. As CDI-W, there are World Cup qualifying or World Cup classes at the show, as CDIO there are Olympic qualifying or Olympic classes at the show.

Dressage

Dressage is a competitive equestrian sport, defined by the International Equestrian Federation (FEI) as “the highest expression of horse training.” The rider will be relaxed and appear effort-free while the horse willingly performs the requested movement. In modern dressage competition, successful training at the various levels is demonstrated through the performance of “tests,” prescribed series of movements ridden within a standard arena. Dressage is considered the most artistic of the equestrian sports and can be traced back centuries. The Freestyle is choreographed and performed to music.



Para Dressage

Para Dressage is the sport of Dressage for athletes with an impairment. Conducted under the same basic rules, but with athletes classified according to the level of their impairment, the horse has to perform at a walk, trot, and canter, and all tests are ridden from memory and follow a prescribed pattern of movements. The only exception is the Freestyle which is specifically choreographed for each horse and is performed to music. Para Dressage is the only Equestrian discipline included in the Paralympic Games, where it has been a regular fixture since 1996. The Paralympic Games are the second largest sporting event in the world after the Olympic Games, and are contested immediately after the Olympic Games in the same city and at the same venue.



The Art of Horsemanship

Athletic excellence • Elite academics • World-class resources



2025 IHSA Region
and Zone
Champions



2025 National
Tournament of
Champions



2025 ANRC National
and Reserve National
Champions

SCAD

The University for Creative Careers

Scan to learn more





CENTRE OF EXCELLENCE

CIAN O'CONNOR

The Kildare native has represented Ireland at four Olympic Games, four World Championships, and six European Championships, earning 165 Senior Nations Cup caps. Career highlights include Olympic Individual Bronze in London 2012 and European Championship Team Gold and Individual Bronze in Gothenburg 2017.

COACHING TO PERFORM

Cian O'Connor provides world-class coaching at Karlswood, integrating traditional principles with modern techniques to achieve full potential of horse and rider performance.


SOURCING THE RIGHT HORSE

With extensive expertise and a global network, Karlswood matches riders with horses suited to their ambitions, from amateur to World Class level.


WINNING PARTNERSHIP

Showjumping offers excitement and prestige worldwide, and Karlswood invites you to share in that journey. As an owner or syndicate member, you'll follow your horse's progress, supported by a professional team committed to excellence.



 WWW.CIANOCONNOR.COM

 MEDIA@KARLSWOOD.COM

 [@CIANOCONNOR_OFFICIAL](https://www.instagram.com/CIANOCONNOR_OFFICIAL)



STEFANO RICCI
◆ EQUESTRIAN LINE ◆



stefanoricci.com
DISCOVER MORE

UNBRIDLED COMMUNITY POWER:

The 2026 Great Charity Challenge

Sponsored by Fidelity Investments®

For the past 16 years, one extraordinary night has merged the thrill of equestrian sport with the beating heart of philanthropy. Thanks to the steadfast generosity of

of hope—where show-jumping excellence and compassionate spirits unite to uplift over 40 local charities.

The electrifying evening is not only about horsepower; it celebrates the power

of community, impact, and collective generosity.

As we gallop toward January 31, 2026, a clarion call invites individuals, families, and

between the community and the equestrian world has deepened—driving interest, support, and unwavering dedication to its mission.

Looking ahead to 2026, with a brand-new group of charities awaiting their selection, Wellington International is honored to empower the 17th edition of this beloved event. The GCC proudly redistributes 100% of donations back into the community thanks to Wellington International's generosity in covering all event-related costs. That means every dollar you give goes directly to making a measurable local impact.

"Year after year, the event continues to thrive, thanks to our many donors and sponsors who join forces to create a genuine impact for local nonprofits and the clients they serve," shares Anne Caroline Valtin, Executive Director of the GCC. "Reflecting

donors and sponsors, the Great Charity Challenge sponsored by Fidelity Investments® (GCC) has now distributed \$24 million to 370 Palm Beach County nonprofit organizations, transforming lives and strengthening our community.

As the winter season returns, the Winter Equestrian Festival once again becomes a beacon

businesses to join the movement, build upon the GCC's legacy, and help propel the event toward another remarkable goal.

In 2025, inspired by the theme of Global Music, the GCC raised and distributed a record-breaking \$2.3 million, directly benefiting some of Palm Beach County's most vulnerable populations. Over 16 editions, the partnership



© SPORTFOT



on the past 16 years and the ties created between Palm Beach County and the equestrian community, we are incredibly grateful for our donors' unwavering trust and commitment—and thrilled to keep sharing the impact of their generosity.”

Beyond distributing funds, the GCC focuses on capacity building, meaningful partnerships, and expanding long-term impact. By strengthening the skills and capabilities of local organizations, we help fuel sustainable, community-wide transformation.

And for 2026, get ready for a night of unforgettable creativity and fun with this year's theme: **RHYME WITHOUT REASON**, where costumes and team spirit collide in delightfully mismatched style!

(continued page 96)



© CASSIDY KLEIN



**GREAT
CHARITY
CHALLENGE**

SPONSORED BY
FIDELITY INVESTMENTS®



Are you impact-driven and inspired to help shape the future of your community?

We invite you to join fellow donors and sponsors in supporting the 17th annual GCC on **Saturday, January 31, 2026**. Together, we can make a difference today and spark positive change for generations to come.

Donations and sponsorships from \$50 to \$200,000 help the GCC reach and exceed its \$1+ million annual goal, with the 2026 edition once again aiming to surpass \$2 million. Customized sponsorship opportunities begin at \$500, and contributions of every level are meaningful.

PHOTOS © CASSIDY KLEIN



EVENT DETAILS

The 17th annual Great Charity Challenge will take place during the 2026 Winter Equestrian Festival at Wellington International on **Saturday, January 31, 2026**.

A new costume relay race initiative for younger kids will open the evening's ceremonies, generously presented by the Postage Stamp Farm Foundation, along with creative art installations from 12 local public schools.

To ensure fairness and transparency, the GCC conducts an open application period every October, followed by a thorough vetting process. Eligible organizations are randomly selected from a lottery drum by sponsors, officials, and community champions. The 2026 charity drawing took place on Giving Tuesday, December 2, 2025 and was livestreamed on GCC social channels as well as WellingtonInternational.com. Thirty charities were selected to compete in this year's event.

GCC-supported organizations play a crucial role in strengthening Palm Beach County's well-being and growth. All grant recipients provide updates for one full calendar year, demonstrating how funds were deployed to benefit the community. A complete list of past recipients and recent fund-use reports is available on the Wellington International website.

For more information, please contact:

Anne Caroline Valtin, Executive Director
acv@greatcharitychallenge.com | 727-678-8677

Visit wellingtoninternational.com/great-charity-challenge for event details.

Follow the GCC on social media: @Great Charity Challenge.



GREAT
CHARITY
CHALLENGE
SPONSORED BY
FIDELITY INVESTMENTS®

JOIN US FOR THE 17TH ANNUAL
**GREAT CHARITY
CHALLENGE**

Saturday, January 31, 2026
At Wellington International

Gates Open at 6PM
Free General Admission



WWW.WELLINGTONINTERNATIONAL.COM/GREAT-CHARITY-CHALLENGE/



DAN RYAN'S
**PRESSURE
CLEANING**

THE PREMIER PRESSURE CLEANING COMPANY IN SOUTH FLORIDA

- Exterior and Interior Window Cleaning
- Pressure Cleaning
- Chemical Roof Cleaning
- Paver Sealing
- Yearly Maintenance Plans Available



(561) 313-3569

www.DanRyansPressureCleaning.com

We Guarantee Our Work!
We carry **LEGITIMATE** Roofers
Workman Compensation



**Licensed & Insured | HOA's
& Roofers Compensation
Residential & Commercial**



**Stable
Legacies**
PLLC

ANDREA P. SINNER, ESQ.

Author of *Newcomer to the Horse World:*
How to Do Right By Horses...and Not Be Taken For a Ride



**A Law Firm
Serving Equestrians
in Palm Beach County**

Your Legacy, Their Future

- **ESTATE PLANNING**
Trusts, wills, powers of attorney,
horse & pet trusts
- **EQUESTRIAN VENTURES**
Purchases, leases, syndicates,
entity formations & formalities
- **LIFE & LEGACY READINESS**
Legacy profiles, emergency
playbooks, annual reviews

andrea@stablelegaciespllc.com
www.stablelegaciespllc.com



THE RITZ-CARLTON RESIDENCES

WEST PALM BEACH

The Pinnacle of Waterfront Elegance *in West Palm Beach*



Experience the coveted lifestyle of The Ritz-Carlton, a limited collection of 138 homes—all with breathtaking, crystal-clear water views—defined by legendary service and exemplary design.

Waterfront residences, with private elevator access,
located on the iconic Flagler Drive, priced from \$3M.

The most prestigious place to call home.

Schedule your appointment today.

TheResidencesWestPalmBeach.com | 561.952.6017

Our new sales gallery is now open at 50 Cocconut Row, S101, Palm Beach, FL 33480

ARTIST'S CONCEPTUAL RENDERING



The Ritz-Carlton Residences, West Palm Beach are not owned, developed or sold by The Ritz-Carlton Hotel Company, L.L.C. 1717 N Flagler Drive Venture, LLC uses The Ritz-Carlton marks under license from The Ritz-Carlton Hotel Company, L.L.C.

 **Douglas Elliman**
Development Marketing

 **RELATED**

 **BHG GROUP**

ORAL REPRESENTATIONS CANNOT BE RELIED UPON AS CORRECTLY STATING REPRESENTATIONS OF THE DEVELOPER. FOR CORRECT REPRESENTATIONS, MAKE REFERENCE TO THIS BROCHURE AND THE DOCUMENTS REQUIRED BY SECTION 718.503, FLORIDA STATUTES, TO BE FURNISHED BY A DEVELOPER TO A BUYER OR LESSEE. This Condominium is developed by 1717 N Flagler Drive Venture, LLC ("Developer") and this offering is made only by the Developer's Prospectus for the Condominium. No statement should be relied upon if not made in the Prospectus provided to you by the Developer. Locations and layouts of windows, doors, closets, plumbing fixtures, balconies, patios, views, as well as structural, architectural, and design elements may vary from concept to actual construction and are not guaranteed to be as depicted. Images and renderings of appliances, plumbing fixtures, countertops, cabinets, soffits, floor coverings, lighting, furniture and décor may depict features not included with a UNIT purchase, but which may be available for purchase for an additional charge. The Ritz-Carlton® is the registered trademark of Marriott International, Inc., but The Ritz-Carlton Residences, West Palm Beach is not owned, developed, or sold by Marriott International, Inc. or its affiliates ("Marriott"). Developer uses the Ritz-Carlton® marks under a license from Marriott, which has not confirmed the accuracy of any of the statements or representations made about the project. Pursuant to license agreements, Developer also uses the trade names, marks, and logos of: (i) The Related Group and (2) BHG Group, each of which is a licensor. In the event the license of Marriott should terminate or not be renewed, the names and logos of Ritz-Carlton® can no longer be used. The managing entities, hotel, artwork, designers, contributing artists, interior designers, fitness facilities, amenities, services, and restaurants proposed and referred to herein are accurate as of this publication date, however, Developer does not guarantee these and reserves the right to change or to make modifications, revisions, and changes it deems desirable or necessary as a matter of code compliance or otherwise. Developer does not control off site attractions and there is no guarantee that any off-site attractions such as shopping venues, restaurants, or other activities, services, and destinations referenced will exist or be fully developed, as depicted, when the Condominium is completed or thereafter. Consult the Prospectus for all terms, conditions, and unit specifications and to learn what is included with purchase. This Condominium is not oceanfront; the sight line of the tower depicted is conceptual and situated with frontage along Flagler Drive in West Palm Beach. This document is summary in nature regarding The Ritz-Carlton Residences, West Palm Beach and Developer's contemplated features and amenities. Your eligibility for purchase will depend upon your state or territory of residency. The Developer is not incorporated in, located in, nor a resident of, New York. This offering is not directed to any person or entity in New York or to any resident of a jurisdiction in which this offering is prohibited by law. 2025©1717 N Flagler Drive Venture, LLC with all rights reserved.



WINTER
EQUESTRIAN
FESTIVAL



WHERE CHAMPIONS PERFORM

December 31, 2025 - March 29, 2026

\$16,000,000 Total Prize Money Featuring:

\$1,000,000 Rolex US Equestrian Open CSI5* Grand Prix, a Rolex Series Event

\$500,000 Fidelity Investments® CSI5* Grand Prix

\$500,000 Bainbridge Companies CSI5* Grand Prix

\$500,000 Modon CSI5* Grand Prix

wellingtoninternational.com



CARGO LINER

FLOORLINER HP™

SADDLE UP WITH PREMIUM PROTECTION

Think beyond the stable with custom-fit coverage from WeatherTech. FloorLiner HP and Cargo Liner are designed to keep sand and dirt contained and out of your vehicle's interior — so you can leave the barn messes behind.



Made in USA

© 2025 MacNeil IP LLC

WeatherTech®.com

Auto. Home. Pet. Find Your Fit. 1-800-441-6287



WINGROVE ACADEMY

A WORLD-CLASS PRIVATE SCHOOL OPENING IN WELLINGTON, FL

Founded on a vision of excellence, innovation, and personalized learning, Wingrove Academy, a PreK-Grade 12 school, encourages students to explore big ideas, follow their curiosities, and push the boundaries of what's possible to shape a better future. Here, learning is both rigorous and rooted in passion—nurturing not just academic achievement, but also the resilience, adaptability, and global perspective it takes to thrive in a complex world.

WINGROVE ACADEMY PREK-12 | VILLAGE OF WELLINGTON, FL
OPENING CLASS 2028 | PREK-9

For more information, contact us at info@wingroveacademy.org.



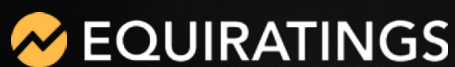
A woman with long brown hair tied back, wearing a blue denim button-down shirt with rolled-up sleeves, stands in a kitchen. She is looking off to the side with a slight smile. The background features a marble countertop, a wooden cutting board, and a stove. The brand name 'Frank & Eileen' is overlaid in white serif font.

Frank & Eileen

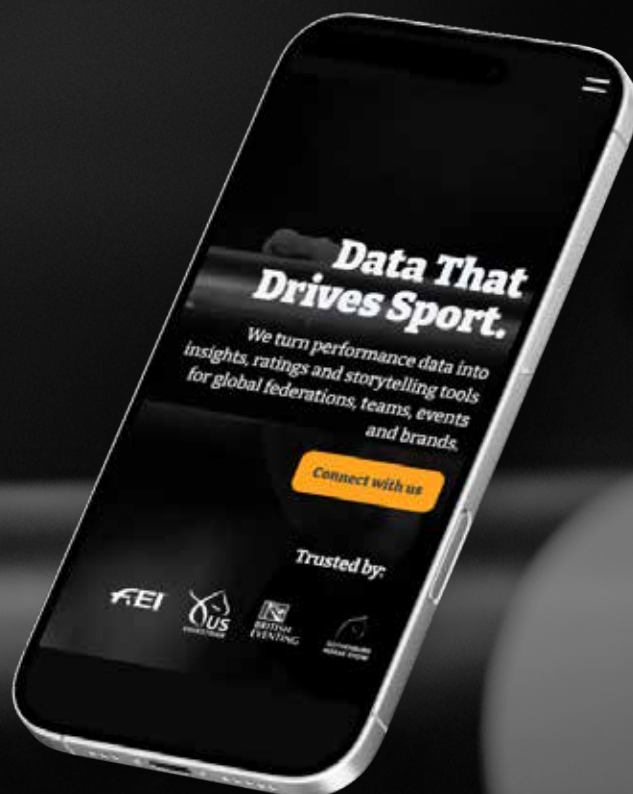
Made to Live in

FRANKANDEILEEN.COM





SHOWS | BRANDS | TEAMS | ATHLETES



Data That Drives Sport.

We turn performance data into insights, ratings and storytelling tools for global federations, teams, shows and brands.



LEARN MORE AT **EQUIRATINGS.COM**

HOME ANNUALLY TO
PGA TOUR CHAMPIONS

PALMBEACHSPORTS.COM

PALM BEACH COUNTY
SPORTS COMMISSION



78° AVERAGE
TEMPERATURE

THE
PALM BEACHES



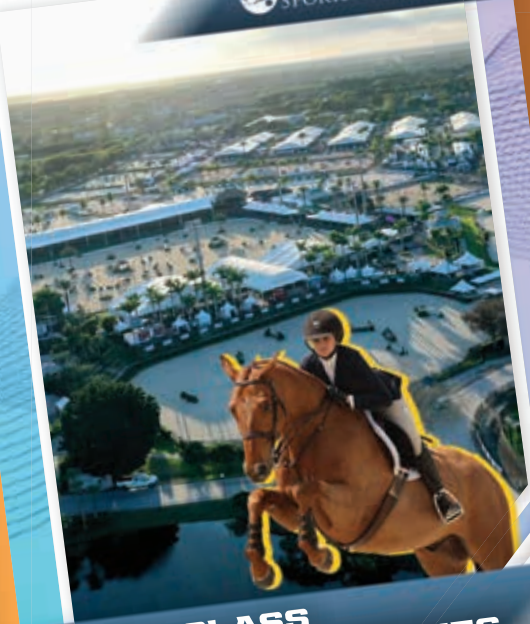
SPORTS COLLECTION

PALM BEACH COUNTY
SPORTS COMMISSION

47 MI

COUNTY
COMMISSION

PALM BEACH COUNTY
SPORTS COMMISSION



WORLD CLASS
EQUESTRIAN FACILITIES

WELLINGTON INTERNATIONAL

UNRIVALED
IN EVERY WAY

WELLINGTON INTERNATIONAL
GLOBALLY RECOGNIZED AS THE PREMIER
EQUESTRIAN SPORTS DESTINATION IN THE WORLD

HOME TO
THE PRESTIGIOUS WINTER EQUESTRIAN FESTIVAL,
EQUESTRIAN SPORT PRODUCTIONS ANNUAL SERIES,
AND THE ADEQUAN® GLOBAL DRESSAGE FESTIVAL

FEATURING
OVER 111 TOTAL ACRES, 14 STATE-OF-THE-ART
COMPETITION ARENAS AND MORE THAN 500
PERMANENT EQUINE STALLS

PALM BEACH COUNTY IS THE
ULTIMATE DESTINATION FOR
EQUESTRIAN SPORTS

HOME
PGA
PALM

From unbeatable facilities, service and incentives
to amazing beaches, we keep everyone cheering.
Start planning at PalmBeachSports.com.

PALM BEACH COUNTY
SPORTS COMMISSION



LED
VIDEO
AUDIO
SCENIC
RIGGING
LIGHTING
GRAPHICS





CONTACT US



765.221.5010



WWW.DODDTECHNOLOGIES.COM



Your Horse. Your Goals. Protected.

At Marshall+Sterling, we understand the dedication it takes to compete at every level. From local shows and premier nationals, to international CSI5*, we're the insurance provider for horsepeople who never settle for second best.

We specialize in comprehensive sport horse coverages, offering mortality, medical and surgical protection tailored to your competition schedule, anywhere in the US or around the world.

**Focus on your ride and
navigating the course.
We've got your back.**

Secure Your Success

Marshall+Sterling helps protect what you've built, and what comes next. Our Personal Risk Solutions and Tactical Risk Solutions include home, farm, and life, as well as business insurance, employee benefits, and wealth management.



**Your sport requires skill,
strategy, and trust. So
does great insurance.**

At Marshall+Sterling, we understand that one unexpected moment can change everything. We help you stay ready for it.

☎ (844) 320-8060

✉ equineinfo@marshallsterling.com

🌐 marshallsterling.com/equine



Scan the QR code to get a quote

Assortment of Huggable Hooves,
Lucky Horseshoe, and Bit of LUV
Jewelry Collections



KARINA BREZ
J E W E L R Y



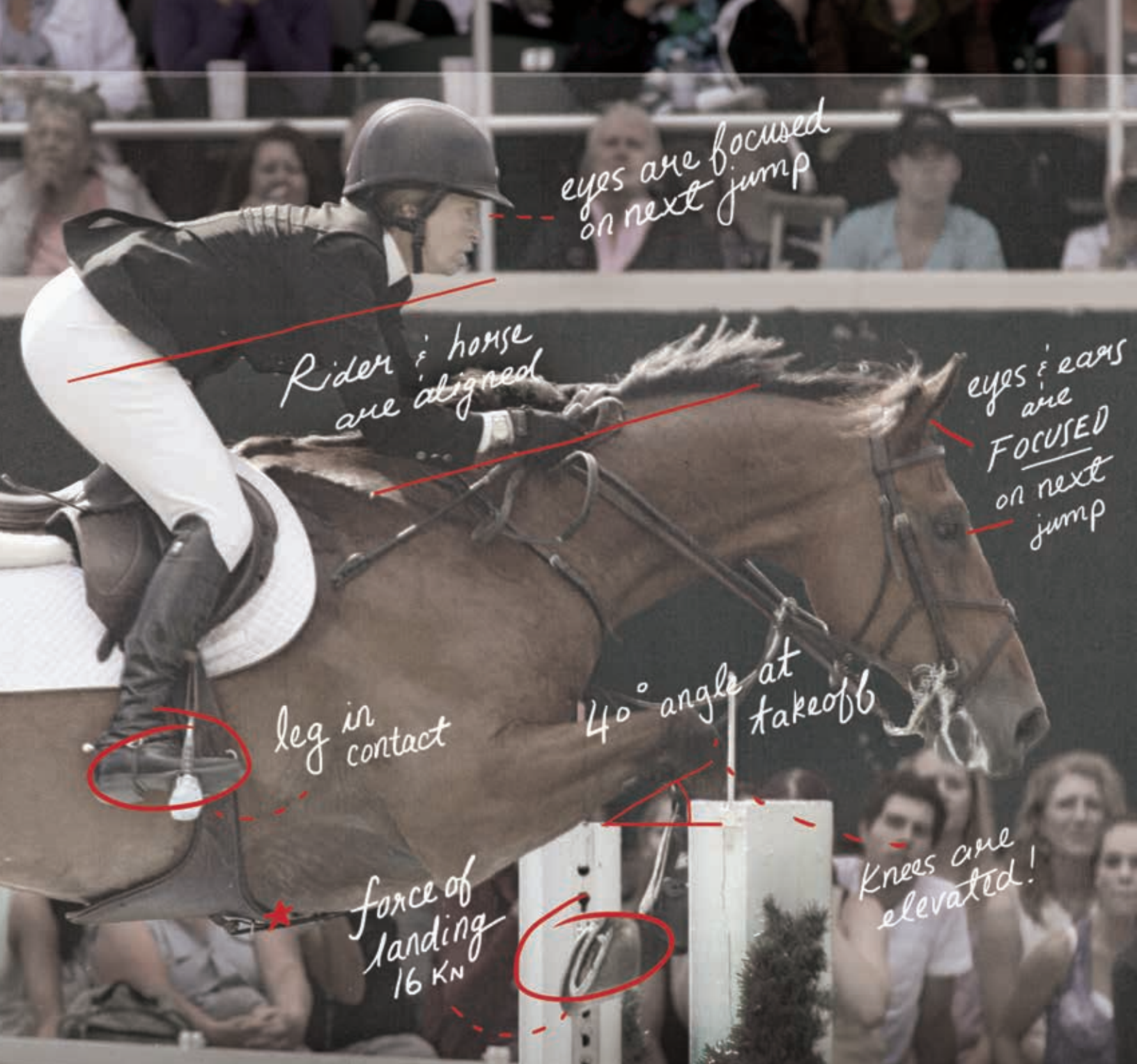
Follow us on Instagram
www.KarinaBrez.com
561.400.4085



The Art of the Unexpected

Trained as a classical artist, Sean views design through a painter's eye. His signature is the fearless layering of eras, materials, and global influences, all arranged with sharp precision. Clients come to him seeking originality, knowing that no two Sean Rush homes will ever be alike. He deconstructs and reimagines, turning found objects and high-end materials into pieces that don't just decorate a space, but define it.





WE LOVE A SPORT THAT REWARDS PRECISION.

CPKC is proud to be a sponsor of the
Winter Equestrian Festival.

cpkcr.com

CPKC



2025 WEF Circuit Champions

JUMPERS

DODD TECHNOLOGIES 1.45M JUMPER

HIGHWAY FBH
OWNER: SHERRI CRAWFORD
RIDER: JACOB POPE

BAINBRIDGE COMPANIES 1.40M JUMPER

WADRO'S LERINA
OWNER: SYDNEY LEVY
RIDER: ERYNN BALLARD

PALM BEACH EQUINE CLINIC 1.35M JUMPER

TYSON FURY
OWNER: LAURA & MARY CHAPOT
RIDER: LAURA CHAPOT

ZEN ELITE EQUESTRIAN CENTER 1.30M JUMPER

JANASTASIA S
OWNER: J.R. SHOW STABLES
RIDER: CHELSEA ROCHE

MANESTREAM 5 YEAR OLD DEVELOPING JUMPER

JUNE SOLSTICE ODF
OWNER: LINDSAY CLAYTOR
RIDER: HAYLIE ROLFE

NORTH STAR 6 YEAR OLD DEVELOPING JUMPER

OCEANA
OWNER: ABIGAIL FRYE
RIDER: ALEXIS BODO

LÖVSTA FUTURE CHALLENGE 7 YEAR OLD DEVELOPING JUMPER

NINJA BF
OWNER: RICHARD KIRBY
RIDER: KEVIN GALLAGHER

LUGANO 1.40/1.45M AMATEUR JUMPER

EQUINE AMERICA ZODIAK DU BUISSON Z
OWNER: HK HORSES
RIDER: RACHEL PROUDLEY

HORSEWARE IRELAND 1.30/1.35M AMATEUR JUMPER

CHAKALAKA 8
OWNER: AQUITAINE EQUINE
RIDER: STELLA PROPP

MARTHA JOLICOEUR, DOUGLAS ELLIMAN

1.20/1.25M AMATEUR JUMPER

IDA GOLD
OWNER: MICHELLE STACY
RIDER: DANIELLE STACY

WÖLFFER ESTATE VINEYARD 1.10/1.15M

AMATEUR JUMPER 18-35

NIKITA JOLIE
OWNER: ASHLAND FARM
RIDER: TATYANA SOLDERA

CMJ SPORHORSE 1.10/1.15 AMATEUR JUMPER 36+

VEMAC JJS Z
OWNER: KINDLE HILL AFFILIATES
RIDER: SALY GLASSMAN

RUSHY MARSH FARM DON LITTLE 1.10/1.15M

AMATEUR MASTERS

CASE-TOUT Z
OWNER: ALBERTO MICHAN
RIDER: NORA KEEFE

FARMVET ADULT AMATEUR MODIFIED JUMPER

CELINE
OWNER: PONY LANE FARM
RIDER: SOPHIA BRUNY

KARLSWOOD 1.40/1.45M JUNIOR JUMPER

GOOD MOOD SEMILLY
OWNER: ILAN FERDER
RIDER: J.J. TORANO

GRIFFIS RESIDENTIAL 1.30/1.35M JUNIOR JUMPER

INDIRA
OWNER: ASHWOOD FARM LLC
RIDER: CAMPBELL BROWN

CAROL SOLLAK, ENGEL & VOLKERS 1.20/1.25M JUNIOR JUMPER

GODFATHER B BELESBAT
OWNER: BRITT SCHEIFELE
RIDER: KYLIE WILSON

PRESTIGE ITALIA 1.10/1.15M JUNIOR JUMPER 14 & UNDER

S&L ZELENSKY
OWNER: SGD EQUESTRIAN LLC
RIDER: SOPHIA DELELLIS

PRESTIGE ITALIA 1.10/1.15M JUNIOR JUMPER 15-17

VENDREDI RIVERLAND
OWNER: ISABELLA CUKROWSKI
RIDER: DEVON SCHWARTZ

TURNHAM GREEN CHILDREN'S MODIFIED JUMPER

BEST BOY 2
OWNER: MISSY CLARK & NORTH RUN
RIDER: BAYLEE ROWAN

BRAINJUICE 1.0/1.05 AMATEUR JUMPER 18-35

GANDALF
OWNER/RIDER: LAUREN PRESTOPINO

JTWG, INC. 1.0/1.05M AMATEUR JUMPER 36+

FERNHILL KUDOS
OWNER/RIDER: LYNN YOOS

LOW CHILD/ADULT AMATEUR TRAINING .80M JUMPER

ONE UP
OWNER: REAGAN THOENNES
RIDER: SOPHIA WALKER

TAKE2 THOROUGHBRED JUMPER

GOLD LABEL
OWNER: JOHN BEEBE
RIDER: MEREDITH GALLAGHER

LOW CHILD/ADULT TRAINING .90M JUMPER 39 & UNDER

KRYPTON DV
OWNER: JULIE BURTON
RIDER: ALANA PICARD

LOW CHILD/ADULT TRAINING .90M JUMPER 40 & OVER

HOXYNULA N
OWNER/RIDER: DEIDRE DONNELLY

TRM 1.0/1.05M JUNIOR JUMPER CALI

COOPER PICCOLINA
OWNER: HAYLIE ROLFE
RIDER: OLIVER ROLFE

VITI DE LONGA

OWNER/RIDER: SIENNA SAFCHIK

KARLSWOOD ITTY BITTY JUMPER CALI

GOLD DIGGER
OWNER: MISSY CLARK & NORTH RUN
RIDER: AVA STRYK
TULLY LARK
OWNER: MAILIN DELIA BECKMAN
RIDER: KENDALL CAFFERTY

PONY JUMPER - SMALL

KA-CHOW
OWNER: SOUTHSIDE EQUESTRIAN LLC
RIDER: LACEY POWERS

PONY JUMPER - MEDIUM/LARGE

HULST SUMMER
OWNER: VS STABLES
RIDER: ZARA MCGUIGAN

HUNTERS & EQUITATION

HIGH PERFORMANCE HUNTER

CAMILLO VDL
OWNER/RIDER: JEAN SHEPTOFF

ALMASED GREEN HUNTER 3'

SEA SMOKE
OWNER: JOHN & STEPHANIE INGRAM LLC
RIDER: EMILY WILLIAMS

FARMVET PERFORMANCE HUNTER 3'3" CALI

AVENTUS
OWNER: STERLING RACING LLC
RIDER: GEOFFREY HESSLINK

VALOR

OWNER: CBB SPORTS LLC
RIDER: JACOB POPE

PERFORMANCE HUNTER 3'6"

PAISLEY PARK
OWNER: ANDESITE EQUESTRIAN
RIDER: GEOFFREY HESSLINK

ANTARÈS GREEN HUNTER 3'3"

CARTER
OWNER: REIN FAMILY LLC
RIDER: BRADY MITCHELL

EQUINE TACK & NUTRITIONALS GREEN HUNTER 3'6"

SANDORI
OWNER: MERIDIAN FARM LLC
RIDER: GEOFFREY HESSLINK

EQUINE TACK & NUTRITIONALS GREEN HUNTER 3'9"

TRUE CASSINI
OWNER: KELLY SIMS
RIDER: MICHAEL BRITT-LEON

PRE GREEN 3 & 4 YEAR OLD

SOUTHERN CHARM
OWNER: SG EQUESTRIAN LLC
RIDER: VICTORIA COLVIN

GREEN CONFORMATION

FIDELIO
OWNER: DR. BETSEE PARKER
RIDER: SCOTT STEWART

WELLINGTON REGIONAL MEDICAL HIGH PERFORMANCE CONFORMATION

SVF CHANGEUP
OWNER: SUNSET VIEW FARM LLC
RIDER: MARIA RASMUSSEN

KITON AMATEUR OWNER 3'6" 18-35

GRAND REMO
OWNER: AQUITAINE EQUINE
RIDER: STELLA PROPP

LAURACEA AMATEUR OWNER HUNTER 3'6" 36 & OVER

WAY WITH WORDS
OWNER/RIDER: SHEILA MOTLEY

LÖVSTA FUTURE CHALLENGE FOR THE STARS OF TOMORROW



A development tour for young
jumping and GP dressage horses





2025 WEF Circuit Champions

(continued)

ADEQUAN AMATEUR OWNER HUNTER 3'3" 18-35

ALISTAIRE
OWNER/RIDER: CAROLINE KELLOGG

BLUCREEQ SPIRITS AMATEUR OWNER HUNTER 3'3" 36 & O

FOREVER ROMANCE
OWNER: GOCHMAN SPORT HORSES LLC
RIDER: BECKY GOCHMAN

IDA DEVELOPMENT ADULT HUNTER 18-35

SECTION A
CARRY ON
OWNER: CHARLOTTE ROSSETTER,
PAMELA WRIGHT
RIDER: REILLY CANARD

HORSEWARE IRELAND ADULT HUNTER 18-35

SECTION B
SYMBOLIQUE
OWNER: MORERA EQUINE LLC
RIDER: ERIN MORERA

KARINA BREZ JEWELRY ADULT HUNTER 36-49

SECTION A
LIGHT IT UP
OWNER: THEODORE IORIO
RIDER: KIMBERLY MALOOMIAN

RINGSIDE HEALTH ADULT HUNTER 36-49

SECTION B
HOOPLA
OWNER: LOUISA ATTENBOROUGH
RIDER: MICHAEL BAUM

BARNWALKERS ADULT HUNTER 50+ SECTION A

PLAYBOOK
OWNER: CH FARM, LLC
RIDER: CAROLYN ANDERSON

MARSHALL & STERLING ADULT HUNTER 50+

SECTION B
CHARLIE BE GOOD Z
OWNER: GOCHMAN SPORT HORSES LLC
RIDER: BECKY GOCHMAN

SMALL JUNIOR HUNTER 15 & UNDER

ADLER
OWNER/RIDER: ALICE GOODWIN

SMALL JUNIOR HUNTER 16-17

BABYLON
OWNER: WALKENBACH EQUESTRIAN
RIDER: PAIGE WALKENBACH

T&R DEVELOPMENT LARGE JUNIOR HUNTER 15 & UNDER

GLOËJ
OWNER: ELEANOR ROONEY
RIDER: REMY BECKER

VOLTAIRE DESIGN LARGE JUNIOR HUNTER 16-17

SAN PEDRO 15
OWNER: WALKENBACH EQUESTRIAN LLC
RIDER: PAIGE WALKENBACH

WEATHERLY STROH STUDIO JUNIOR HUNTER 3'3" 15 & UNDER

SUNDOWN
OWNER: CHARLOTTE ROSSETTER,
PAMELA WRIGHT
RIDER: KENZIE SMITH

JUNIOR HUNTER 3'3" 16-17

LYSANDER
OWNER/RIDER: MARLENE HOLLAND

SMALL/MEDIUM CHILDREN'S PONY

BEST KEPT SECRET
OWNER: JILL SHULMAN
RIDER: GABRIELLA PITTS

CWD LARGE CHILDREN'S PONY

MARVEL COMIC
OWNER: JOE CURRAIS
RIDER: AMELIA WETENHALL

CHILDREN'S HUNTER 14 & UNDER

VALOR
OWNER: CBB SPORTS LLC
RIDER: CLARA BURNHAM

VOGEL CHILDREN'S HORSE 15-17

DOM PERIGNON
OWNER: SAMANTHA O'BRIEN
RIDER: GEORGIA SPECTOR

STRYK GLOBAL DIPLOMACY SMALL PONY HUNTER CALI

FORTNITE
OWNER/RIDER: CISY ZHOU

SO ENCHANTED
OWNER: SPRUCEDALE INC
RIDER: LACEY POWERS

MEDIUM PONY HUNTER

EDITORIAL
OWNER/RIDER: CISY ZHOU

LARGE PONY HUNTER

ON TOUR
OWNER: CHARLOTTE KELLY
RIDER: KENZIE SMITH

SMALL GREEN PONY

LITTLE HOLLYWOOD
OWNER: RIVERS EDGE
RIDER: CISY ZHOU

MEDIUM GREEN PONY

BOCA'S RAIN BEAU
OWNER: PONIES & PALMS SHOW STABLES LLC
RIDER: LILLY HERZOG

LARGE GREEN PONY

SO DAZZLING
OWNER: SPRUCEDALE INC
RIDER: EMI RICHARD

ESP OPEN HUNTER 3'3"

DESIGNER
OWNER: CONTINENTAL STABLES, LLC
RIDER: MARCUS AU

USHJA HUNTER 2'9"

AUGUST
OWNER: ROSE HILL FARM LA, LLC
RIDER: MICHAEL BRITT-LEON

PERFECT PRODUCTS USHJA HUNTER 3' CALI

DEJA BLUE
OWNER: ISABELLA FIORETTI
RIDER: MICHAEL BRITT-LEON
CAPITAL BLUE
OWNER: SHANNON MC LEAN
RIDER: MERRY HARDING

USHJA HUNTER 2'6" CALI

PRIVATE PARTY
OWNER: KELLY SIMS
RIDER: MICHAEL BRITT-LEON
KAMERA SHY
OWNER: CHRISTY POWELL
RIDER: MAGGIE GOULD

USHJA HUNTER 2'3"

EXACTLY
OWNER: MADAKET LANE LLC
RIDER: MERRY HARDING

USHJA HUNTER 2'

HARLOW
OWNER: SWEDE VENTURES
RIDER: MADELEINE FLOCKS

USHJA HUNTER 2' (FIRST YEAR SHOWN)

WHEEMHOEVE'S GAMEKEEPER
OWNER: OAKLAND VENTURES LLC
RIDER: LILLY RAE BUNCHER

USHJA HUNTER 2'3" (FIRST YEAR SHOWN)

LITTLE HOLLYWOOD
OWNER: RIVERS EDGE
RIDER: CAROLINE PASSARELLI

USHJA HUNTER 2'6" (FIRST YEAR SHOWN)

LOUISIANNA
OWNER/RIDER: LAURIE STEVENS

USHJA HUNTER 2'9" (FIRST YEAR SHOWN)

MCILROY
OWNER: DANYA BRAY
RIDER: KATIE STRANDBERG

TAKE2 THOROUGHBRED HUNTER

CAPTURE THE MUSIC
OWNER: PAULINE LAMPISHIRE
RIDER: HUNTER KAY

2'9" YOUNG HUNTER (5 & UNDER)

TINTIN
OWNER: PAULA MONFORTON
RIDER: GREG CROICK

3' YOUNG HUNTER (6 & UNDER)

LA DOLCE VITA
OWNER: JOANNA ESTEY
RIDER: DENIS SWEENEY

3'3" YOUNG HUNTER (7 & UNDER)

ATHENA
OWNER: BETSY FAUNTLEROY
RIDER: HUNTER KAY

LOW ADULT HUNTER 2'6" SECTION A

FABRIANO
OWNER: RICHARD CUNKLE
RIDER: MORGAN E. GOODMAN

ALWAYS FAITHFUL EQUESTRIAN LOW ADULT HUNTER 2'6" SECTION B

HIGH SOCIETY
OWNER: MICHAEL BRITT-LEON
RIDER: KELLY SIMS
KNIGHTLY
OWNER: BRENDAN WILLIAMS
RIDER: KRISTEN BARAN

OFFICIAL HORSE HEALTH CARE SUPPLIER
OF THE
WINTER EQUESTRIAN FESTIVAL




EQUINE
Tack & Nutritionals

www.equinetan.com

Equine Tack & Nutritionals at Wellington International

14440 Pierson Road • Wellington, FL 33414

800-833-8225



2025 WEF Circuit Champions

(continued)

BAXTER MIAMI WEF 2'9" ADULT AMATEUR HUNTER

BAZOOKA
OWNER/RIDER: EMILY SIMON

LOW CHILDREN'S HUNTER 2'6" CALI

CASPEN
OWNER/RIDER: AVERY ROPER

SECRECY

OWNER: JOE CURRAIS
RIDER: AMELIA WETENHALL

SHORT STIRRUP HUNTER CALI

AFTER THE RAIN
OWNER: IMPERIAL SHOW STABLE
RIDER: MISCHA MORRISSEY

LITTLE DASH ABOUT
OWNER: MOLLY KENNEY
RIDER: CHASE WHITE

WALK/TROT

SYBIL MOYLAN

CROSS RAIL HUNTER – YOUNGER CALI

LITTLE DASH ABOUT
OWNER: MOLLY KENNEY
RIDER: COLLINS WHITE

ROSENHOF JULIE
OWNER: MR & MRS GAVIN MOYLAN
RIDER: EVELYN MOYLAN

CROSS RAIL HUNTER – OLDER

IN FAVOR
OWNER/RIDER: KAREN LUCIAN

RUSTY STIRRUP HUNTER

SHIRLEY BASSEY
OWNER/RIDER: KELLY GARDNER

PLEASURE PONY UNDER SADDLE

NEVER ENOUGH SWEET DREAMS
OWNER: BLUE STAR CAMPS EQUESTRIAN
RIDER: AVEN VISSICCHIO

PLEASURE HORSE UNDER SADDLE

SUNDOWN
OWNER: CHARLOTTE ROSSETTER
& PAMELA WRIGHT
RIDER: PAMELA WRIGHT

USHJA HUNTER 2' JUNIOR/AMATEUR

MADHAPPY
OWNER: ALLRSFARM LLC
RIDER: JOAN EHRHART

11 AND UNDER EQUITATION

NAVA GOODHART

12-14 EQUITATION

KENDALL DEY

ILLUSTRATED PROPERTIES EQUESTRIAN 15-17**EQUITATION CALI**

MAGGIE KING
PAIGE WALKENBACH

ADULT EQUITATION

WILLOW VINCE



2025 TROPHIES & SPECIAL AWARDS

**LUGANO OVERALL JUMPER OWNER**

ILAN FERDER

LUGANO OVERALL HUNTER OWNER

JOHN & STEPHANIE INGRAM LLC

YETI OVERALL JUMPER RIDER

ERYNN BALLARD

YETI OVERALL HUNTER RIDER

GEOFFREY HESSLINK

WEATHERTECH OVERALL JUMPER TRAINER

JOHN BRENNAN

WEATHERTECH OVERALL HUNTER TRAINER

BRENDAN WILLIAMS

ARION OVERALL PONY HUNTER RIDER

LACEY POWERS

CHRISTY CONARD PERPETUAL TROPHY**FOR EQUESTRIAN EXCELLENCE**

OLIVIA SWEETNAM

SIMBA RUN PERPETUAL TROPHY

CHECKER 47
CHRISTIAN KUKUK

WENDY W NEWBY MEMORIAL TROPHY

FOREVER ROMANCE

HERMES 1.50 CHAMPIONSHIP JUMPER SERIES**OVERALL LEADING RIDER**

SPENCER SMITH

JAMES 'JIM' BRUNDAGE MEMORIAL TROPHY

LITTLE HOLLYWOOD
OWNER: RIVERS EDGE
RIDER: CISO ZHOU

HOWARD A NEWMAN PERPETUAL**MEMORIAL TROPHY**

CASE-TOUT Z
OWNER: ALBERTO MICHAN
RIDER: NORA KEEFE

KENYA PERPETUAL MEMORIAL TROPHY

CHARLIE B GOOD Z
OWNER: GOCHMAN SPORT HORSES LLC
RIDER: BECKY GOCHMAN

PIN OAK FARM PERPETUAL TROPHY

J.J. TORANO

THE JAY MATTER MEMORIAL TROPHY

CAMILLO VDL
OWNER/RIDER: JEAN SHEPTOFF

THE HARRISON CUP PERPETUAL TROPHY

BEERBAUM STABLES GMBH

BRUNO DELGRANGE PALM BEACH MEDAL**SERIES WINNER**

BROOKE TAYLOR

CARLY ANTHONY SHOWJUMPING JUNIOR**SPORTSMANSHIP AWARD**

CLAYTON FARRELL

DAVID E. BURTON JR PERPETUAL TROPHY**FOR EXTRAORDINARY SERVICE**

FRANCISCO "LEFTY" GOMEZ & RAMON HUERTA

THE RAMBLEWOOD PERPETUAL TROPHY

CHRIS KEITH

LIFETIME ACHIEVEMENT AWARD

RALPH CARISTO

CHAMPION EQUINE INSURANCE OVERALL**JUMPER STYLE WINNER**

KATANGA V/H DINGESHOF
OWNER/RIDER: NICOLA PHILIPPAERTS

CHAMPION EQUINE INSURANCE OVERALL**HUNTER STYLE WINNER**

BABYLON
OWNER: WALKENBACH EQUESTRIAN LLC
RIDER: JOHN FRENCH

DENNIS DAMMERMAN PERPETUAL TROPHY

BEN MAHER

JEFF WIRTHMAN PERPETUAL TROPHY

JACK TOWELL

"CLASS ACTION" BEST EQUITATION HORSE**PERPETUAL TROPHY**

CASTLEFIELD SPARTACUS

BARRY LOUISE LANE PERPETUAL**MEMORIAL TROPHY**

DERBY DE RIVERLAND
NICOLA PHILIPPAERTS

VILLAGE OF WELLINGTON CUP

CYDELLO
RICHARD VOGEL

IN MEMORY OF NIAL GRIMES "CHEERS"**PERPETUAL TROPHY**

CIAN O'CONNOR

KATE NASH BOONE STYLE AWARD

CHARLOTTE JACOBS

HERMAN "KAPPY" KAPLAN PERPETUAL**MEMORIAL TROPHY**

PORTOBELLA V/D FRUITKORF
EMILIE CONTER

BRAINJUICE U25 GRAND PRIX SERIES CHAMPION

HALLIE GRIMES

MARTHA JOLICOEUR, DOUGLAS ELLIMAN**OVERALL LEADING LADY RIDER**

NATALIE DEAN

PALM BEACH

WELLINGTON

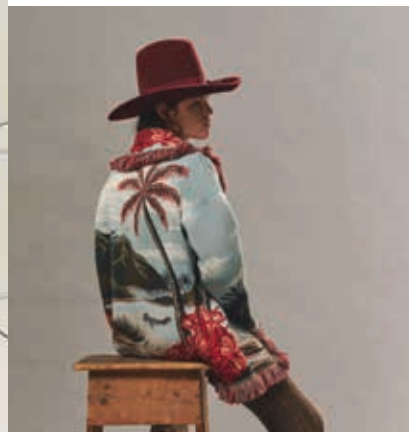
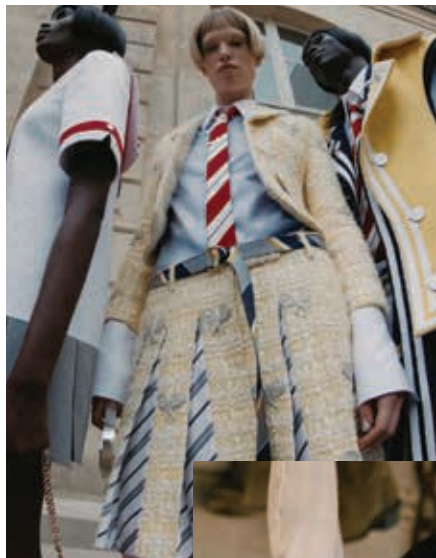
NANTUCKET

SERENELLAUSA.COM

VALEXTRA

ALANUI

THOM BROWNE



GOD'S TRUE CASHMERE



DUBINI



SUZANNE KAUFMANN

ACCESSORIES

READY-TO-WEAR

FINE JEWELLERY

APOTHECARY

SERENELLA

VIA BICE 313 1/2 WORTH AVENUE PALM BEACH 561.220.2442

3400 EQUESTRIAN CLUB DRIVE WELLINGTON 561.220.3000

9 SOUTH BEACH STREET NANTUCKET 508.228.3400



WINTER EQUESTRIAN FESTIVAL
SPORT HORSE AUCTION

featuring

VDL Stud

// AUCTION

Thursday
February 26, 2026

Auction of talented 5, 6, 7, and 8-year-old showjumpers
during WEF week 8

// PRESENTATION

Tuesday
February 14, 2026

LIVE, PHONE & ONLINE BIDDING!

www.wefsporthorseauction.com





Donald P. Dufresne
Shareholder
561.820.2889
ddufresne@beckerlawyers.com

SPECIALIZING IN EQUINE LAW

- Contracts and agreements for the purchase, sale, leasing, boarding, training, and breeding of horses
- Real estate expertise serving the unique needs of equestrians, including construction, development, code enforcement and agricultural classifications
- Disputes and litigation arising from equine transactions, ownership disputes, fraud or unpaid bills for services rendered
- Business formations, including horse syndicates and partnerships
- Enforcement of equine lien rights

Serves areas of Wellington, Ocala, and Internationally

Becker
beckerlawyers.com



Personalized Care. Exceptional Results.

Palm Beach County's premier destination for concierge-level eye care.

At See Vision Eye Institute, we provide comprehensive eye care and advanced surgical solutions designed to bring clarity at every stage of life. From routine eye care to life-changing procedures that restore freedom from glasses and bifocals, our team delivers exceptional results with precision.

Schedule a consultation today!

 5165 S State Rd 7, Lake Worth, FL 33449

 seevisioneye.com

 561.621.2020



2026 SCHEDULE†

PREMIERE WEEK

December 31–January 4

Rating: USEF Premier "AA"

Saturday Night: \$75,000 Battle of the Sexes
presented by LeMieux

WEEK 1

**Sponsored by Palm Beach County
Sports Commission**

January 7–11

Rating: CSI3*, USEF Premier "AA"

Saturday Night: \$140,000 Palm Beach County
Sports Commission CSI3*
Grand Prix

WEEK 2

Sponsored by Southern Arches

January 14–18

Rating: CSI3*, USEF Premier "AA"

Derby Field: FEI Jumpers

Saturday Night: \$50,000 Palm Beach Equine
Clinic Grand Prix

WEEK 3

Sponsored by NetJets

January 21–25

Rating: CSI4*, CSI2*, USEF Premier "AA"

Saturday Night: \$215,000 NetJets CSI4* Grand Prix

WEEK 4

Sponsored by MARS Equestrian

January 28–February 1

Rating: CSI4*, CSI2*, USEF Premier "AA"

Derby Field: FEI Jumpers

Saturday Night: Great Charity Challenge
sponsored by Fidelity Investments®

WEEK 5

Sponsored by Fidelity Investments®

February 4–8

Rating: CSI5*, CSI2*, USEF Premier "AA"

Friday Night: Kristen Baran \$100,000 Neil S. Hirsch
Boys and Girls Club Team Hunter
Exhibition Class

Saturday Night: \$500,000 Fidelity Investments®
CSI5* Grand Prix

WEEK 6

Sponsored by IDA Development

February 11–15

Rating: CSI3*, USEF Premier "AA", WCHR

Derby Field: FEI Jumpers

Saturday Night: \$150,000 Peter Wetherill
WCHR/USHJA Hunter
Spectacular

WEEK 7

Sponsored by Modon

February 18–22

Rating: CSI5*, CSI2*, USEF Premier "AA"

Saturday Night: \$500,000 Modon CSI5* Grand Prix

WEEK 8

Sponsored by Florida Coast Equipment

February 25–March 1

Rating: CSIO4*, USEF Premier "AA"

Thursday Night: WEF Sporthorse Auction

Friday Night: BrainJuice U25 Series Semi-Final

Saturday Night: \$150,000 Nations Cup CSIO4*
presented by
Florida Coast Equipment

WEEK 9

Sponsored by Bainbridge Companies

March 4–8

Rating: CSI5*, CSI2*, USEF Premier "AA"

Derby Field: Hunter Derbies

Saturday Night: \$500,000 Bainbridge Companies
CSI5* Grand Prix

WEEK 10

Sponsored by Horseware Ireland

March 11–15

Rating: CSI4*, USEF Premier "AA"

Saturday Night: \$215,000 Horseware Ireland
CSI4* Grand Prix

WEEK 11

Sponsored by WeatherTech

March 18–22

Rating: CSI4*, CSI2*, USEF Premier "AA"

Derby Field: Hunter Derbies

Thursday Night: WEF Equitation Championship
presented by Prestige Italia

Saturday Night: \$150,000 Hermès 1.50m
Championship Jumper Series Final

ROLEX FINALE WEEK

March 25–29

Rating: CSI5*, CSI2*, USEF Premier "AA"

Saturday Night: \$1,000,000 Rolex US Equestrian
Open CSI5* Grand Prix,
a Rolex Series Event

† Schedule subject to change.

Check wellingtoninternational.com for the latest event information.

BUCKEYE[™]
NUTRITION



PURE

NUTRITION

To learn more, visit BuckeyeNutrition.com



100% equine-focused company



100% med-free facility



100% traceable, pure ingredients

2026 WEF VENDORS

INTERNATIONAL CLUB

Lugano
Stefano Ricci
Ritz Carlton Residences,
West Palm Beach
Sean Rush
Wellington Lifestyle Partners
Human Touch

TIKI TERRACE

French Boutique (WEF P-2)
Flor de Campo (WEF 3-4)
Irene Neuwirth (WEF 5-6)
Zoe (WEF 7-11)
SR Blackinton (WEF 12)
WEF Store
Hermès
DandyLion
Karina Brez Jewelry
Serenella

BRIDGE DECK AT TIKI TERRACE

DADA Sport
Coastal Steel Structures (WEF 5-7)
US Equestrian Store (WEF 12)
Cara VL (WEF P-1)
Horsehair Jewellery (WEF 3- 4)
Hangai Mountain Textiles (WEF 5-7)
The Calvert Collection (WEF 8-12)
Weatherly Stroh Studio (WEF 8-11)

HUNTER HILL

LeMieux
Gladiator Equine
Lash LaRue
VMJ for Horses (WEF P-10)
Coastal Steel Structures (WEF 11-12)

INTERNATIONAL RING WARM UP

Prestige Italia
Horcery
Bruno Delgrange Maître Sellier
Barnwalkers
IDA Development

RING 6

Antarès Sellier
Voltaire Design
Theault

RING 9

Arion Sellier
Forestier Sellier
Sportfot
Graceful Oaks
Nathalie's Café

RING 10

Ringside Health
McGuinn Farms
Magdalena's Mexican

VENDOR VILLAGE SOUTHSIDE

Danny & Ron's Dog Rescue
Equestrian Team Apparel
Optic Nirvana
Fab Finds by Sarah
JODS
Sofie's Boutique
Best Buds Florist
Odette Boutique (WEF P-4)
Respoke (WEF 5-8)
Flor de Campo (WEF 9-10)
Renrod Equestrian (WEF 11-12)

VENDOR VILLAGE NORTHSIDE

Loopy's Crepes
The In Gate
Ride EquiSafe
Miki Saddlery
Parlanti
Equ Lifestyle Boutique
EQUIS
Vogel NYC
Kelly's Lemonade

PONY ISLAND

Farm Stand
Hunters Landing
Silvia's Tacos
Florida Snow
Best Pizza Heaven
Palm Beach International Academy
House Call The App (WEF 1-2)
Fashion Farm Girl (WEF 3, 4, 6, 10, 11 & 12)

OASIS

Charles Ancona
La Enovesé Designs
Erica Wilson (WEF P-4)
J Wilder Imports (WEF 5-6)
Odette Boutique (WEF 7-8, WEF 11-12)
Ryde Equestrian (WEF 9-10)
Devoucoux
70 Degrees
CWD Sellier
Paulina Velez Designs
The Oasis Café

TRAILER ROW

Stephex
Tony Hanley Horse Supplements
Kelly Kocher Tack
Running Fox
Turner & Co.
Personalized Products
CM Hadfield's
Equine Tack & Nutritionals
Equiline
Tack N' Rider
Toasties Gourmet

THE BARNs

Paddock Paws Veterinary
Dandy Products
FarmVet
Josey's Laundry
Anonymous Coffee

SOUTH BARNs

Rider's Boutique
Zest
Blue Ribbon Carts
Tampico Hermoso

■ = FOOD VENDORS

SUMMER IN A BOTTLE THE OFFICIAL ROSÉ

OF THE INTERNATIONAL CLUB AT THE WINTER EQUESTRIAN FESTIVAL



SHOP NOW WOLFFER.COM



WINTER EQUESTRIAN FESTIVAL 2026



PHOTOS UPLOADED DAILY ON

sportfot.com

Weekly and seasonal packages available

Private photo shoot on demand

Pre order your video reels



@sportfot.photovideo



RINGSIDE HEALTH MEMBERSHIP PROGRAMS

Exclusive Concierge Packages Designed for the Equestrian Lifestyle

PREMIUM CONCIERGE MEMBERSHIP

- 24/7 Provider Access
- Healthcare Navigation
- Expedited Referrals to Specialists
- Expedited ER Visits & Care Coordination
- Discounts on all Wellness Services
- Licensed Physician Coverage in all 50 States
- In-Barn, In-Home, or Hotel Visits
- Comprehensive Physical Exam and Health Review
- USEF Return-To-Sport Clearance
- TUE-Therapeutic Use Exemption Letter for FEI Riders
- Comprehensive functional lab evaluation and advanced epigenetic testing for deep biological insight.
- Personalized care focused on longevity and hormone optimization, performance optimization, and ageless medicine.
- Full genetic screening and risk evaluation for proactive personalized health management.
- Targeted peptide therapies and premium supplements to support enhanced health and recovery.
- Personalized weight management program led by Board certified obesity medicine physician.
- Complete Women's health care led by board certified OBGYN

MEDICAL CONCIERGE MEMBERSHIP

- 24/7 Provider Access
- Healthcare Navigation
- Expedited Referrals to Specialists
- Expedited ER Visits & Care Coordination
- Discounts on all Wellness Services
- Licensed Physician Coverage in all 50 States
- In-Barn, In-Home, or Hotel Visits
- Comprehensive Physical Exam and Health Review
- USEF Return-To-Sport Clearance
- TUE-Therapeutic Use Exemption Letter for FEI riders

Ringside Health. Driven by passion, backed by science.
Medical care designed for the demands of the equestrian lifestyle.

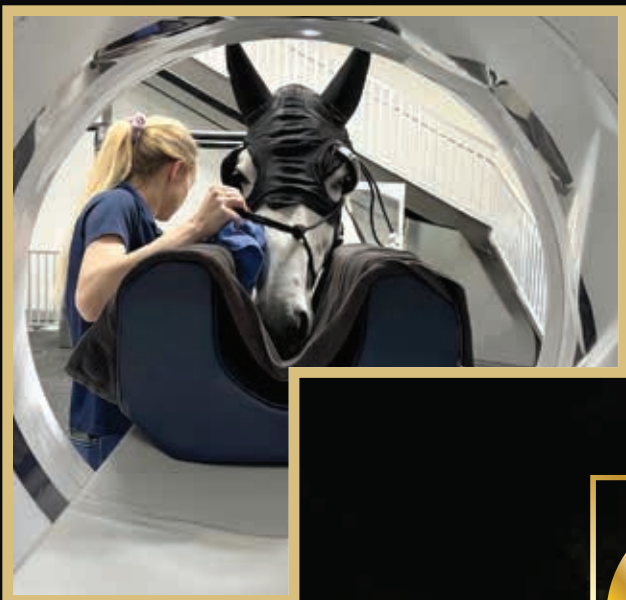


- Located On-Site at Wellington International
- www.RingsideHealth.com
- (561) 247-2373
- info@ringsidehealth.com

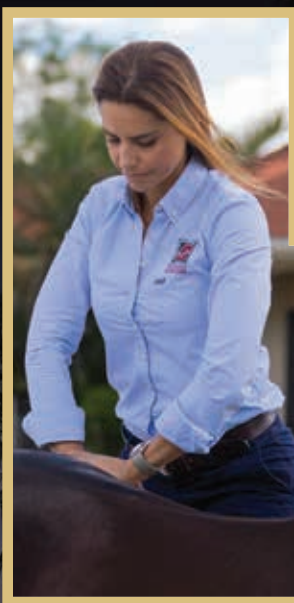


ADVERTISERS INDEX

Adequan®.....	11	MARS Equestrian	71
The Bainbridge Companies LLC	12-13	Marshall + Sterling	108
Becker Equine Law.....	119	Martha W. Jolicouer, P.A. Douglas Elliman.....	84-85
BrainJava.....	62-63	Modon	4-5
BrainJuice.....	Inside Back Cover	NetJets.....	18-19
Buckeye Nutrition.....	121	Palm Beach County Sports Commission	105
Chrome Horse Society Tequila.....	81	Palm Beach Equine Clinic	127
Cleveland Clinic	87	Perfect Products.....	33
Coastal Steel Structures	133	Prestige Italia	43
CPKC.....	111	Ringside Health.....	125
Dan Ryan's Pressure Cleaning	98	Ritz Carlton Residences, West Palm Beach	99
Defiant Whisky.....	39	Robb Report.....	25
Diane Griswold Johnston.....	132	Rolex	Inside Front Cover
Dodd Technologies	107-108	Savannah College of Art & Design	91
Equine Tack & Nutritionals.....	115	Sean Rush	110
EquiRatings.....	104	See Vision	119
Ethel M Chocolates	Back Cover	Serenella	117
Fidelity Investments®.....	15	Sportfot	124
Florida Coast Equipment.....	66-67	Stable Legacies, PLLC	98
Frank & Eileen.....	103	Stefano Ricci Equestrian Line	93
GGT Footing Textile	89	The Wellington.....	30-31
Gold Coast Feed	86	US Equestrian.....	131
Great Charity Challenge	97	VDL Sport Horse Auction.....	118
Griffis Residential	45	Vogel.....	61
Horseware Ireland	52-53	WEF Hospitality Experiences.....	130
IDA Development	9	WeatherTech	101
Karina Brez Jewelry.....	109	Wellington Quarterly	83
Karlswood	92	Wellington International Shop	7
LeMieux	35	Wingrove Academy.....	102
Lövsta Future Challenge	113	Wölffer Estate Vineyard	123
Lugano	48-49	YETI	79



PALM BEACH EQUINE CLINIC



UNPARALLELED EXCELLENCE IN EQUINE SPORT MEDICINE



13125 Southfields Road at Pierson Road, Wellington, FL
561-793-1599 | www.equineclinic.com

f Palm Beach Equine Clinic @pbequineclinic

2025

SPORTFOT®

MEMORIES





BOOK PREMIUM HOSPITALITY EXPERIENCES

during Saturday Night Lights
at Wellington International

THE BLUE RIBBON CLUB

Indulge in a gourmet dinner buffet, enjoy an open bar, and savor the best views of the International Arena.

THE BRAINJUICE TIKI HUT

Relax with a casual, lively atmosphere just steps from the action, for a VIP experience with a fun twist.

THE NETJETS LANDING

Experience the ultimate in exclusivity with front-row seats, enhanced amenities, an exquisite dinner, and open bar access in the heart of the International Arena.

THE GALLERY

Available only on 4 and 5* Grand Prix nights, enjoy a buffet, open bar, and an exclusive post-competition nightclub for guests 21+.*

Scan the QR code
to learn more



2026

JUMPING FINAL



2025 CHAMPIONS
CHRISTIAN KUKUK
CHECKER 47

\$1,000,000 ROLEX U.S. EQUESTRIAN OPEN GRAND PRIX CSI5*, A ROLEX SERIES EVENT
WELLINGTON INTERNATIONAL • WINTER EQUESTRIAN FESTIVAL • MARCH 28, 2026

TRIPLE CIRCUIT CHAMPION BRACELET



Triple WEF Circuit Champion
King - French Thoroughbred 2000
Viking - Selle Francais 2001, 2002



Diane and the Lapis Tree Ltd. contribute to many Animal Rescue and Charitable organizations including:

American Humane Audobon Egret Society Jack Hanna - Rhino
Panther Ridge Sanctuary Danny & Ron's Rescue Scituate Animal Shelter
♥ Heart Ambulance Namimbia - Africats and Cheetah Preservation

617-827-9111 dianaspreciousjewels.com insta: dianaspreciousjewels Dijohnston1@icloud.com
1st dibs Atelier - Jewelry & Watches Tucson International Gem Show - GJX Idar Oberstein Group 2026



WHEN PASSION DEMANDS MORE...

THE STANDARD

IS ONLY THE

Beginning

There's a certain poetry in the equestrian life: the quiet before a ride, the steady breath of a trusted horse, the elegance of movement in perfect harmony.

At Coastal Steel Structures, we build spaces that honor that beauty.

We approach each project with the same care and precision you bring to your craft. Because this isn't just about building, it's about creating a space worthy of your passion and the life you've built around it.



COASTAL
STEEL STRUCTURES

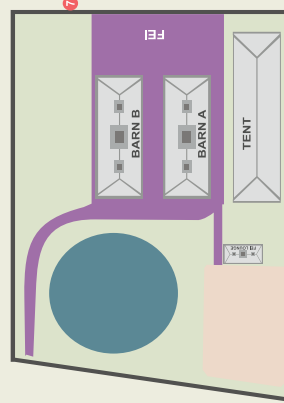


866.759.9644 | coastalsteelstructures.com

- ## OFFICES & PARKING

- ## SHOPPING AREAS

- Bridge Deck Shops
Farm Stand
Hunter Hill
Pony Island
Ring 6 Vendors
South Ring Vendors
Vendor Village
Tiki Terrace
The Shops at Int'l Club



SHUTTLE STOPS

- 1 Main Entrance
- 2 Farm Stand
- 3 Ring 6
- 4 Exhibitor Services
- 5 Vendor Village
- 6 Dever Golf Cart Rentals
- 7 FEI Barns
- 8 South Ring
- 9 South Parking
- 10 Ring 10
- 11 DeNemethy Ring
- 12 International Club
- 14 Grass Lot 5 Parking

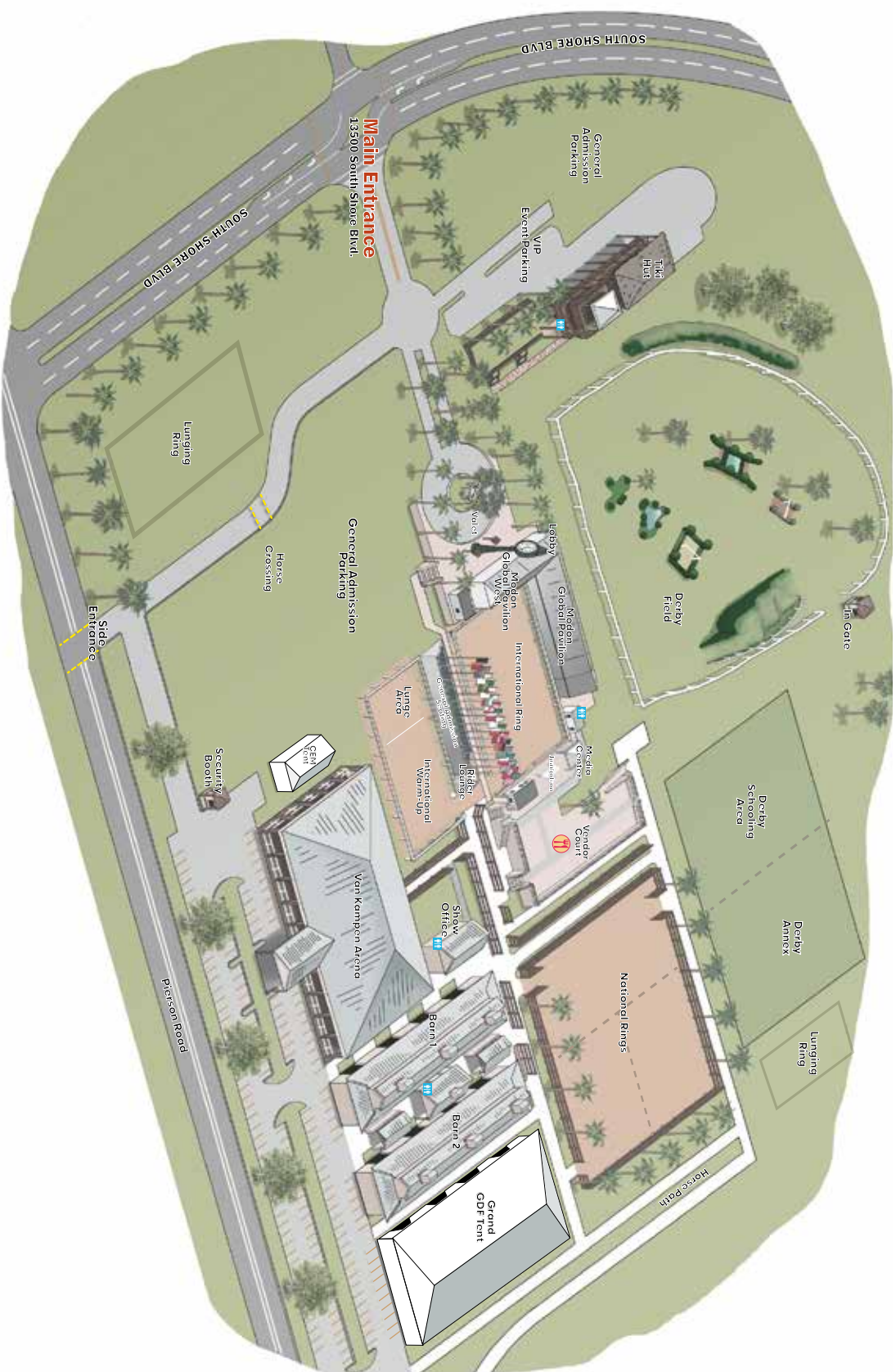
LEGEND

- Medic
- Fire Rescue
- Gate Entry
- Restrooms
- Food Vendors
- ATM
- Handicap Parking
- Horse Crossing
- Shuttle Stop
- Shuttle Route



Private Forms

Private Forms



EQUESTRIAN VILLAGE

EQUESTRIAN VILLAGE VENDORS

VENDOR DECK

- Aviar Saddles
- Barnwalkers
- IDA Development

Equestrian Team Apparel

- Romitelli Boots
- Richard's Equine Video
- Dressage Collections

Unicorn Exceptionnel

- Horse of Course
- Centre Line Media
- Brims on the Bluff (GDF 1, 3, 8 & 10)

THE PATHWAY

- Daily Dose Equine (GDF 7)
- Hulesbos Saddles (GDF 3 & 5)

SUPPLEMENTS & FUNCTIONAL BEVERAGES FOR YOUR BRAIN HEALTH!

BRAINJUICE[®]

MARIE HECART

PROFESSIONAL SHOW JUMPER (FRANCE),
RIDING "TISARA QUALITY CRUISE"

MAJOR SPONSOR



Wellington
International

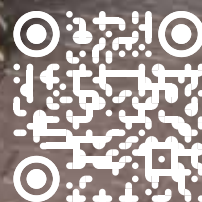
PROUD SPONSOR



WINTER
EQUESTRIAN
FESTIVAL

BRAINJUICE.ME

USE CODE "WEF" AT
CHECKOUT FOR 20% OFF!



Elevate *Every* Occasion With Ethel M[®] Chocolates

As the luxe expression of the Mars family of brands, Ethel M Chocolates embodies the essence of American luxury. With a rich, decades long heritage of chocolate-making excellence, a spirit of innovation and a fierce commitment to superior ingredients and exceptional craftsmanship, our chocolatiers create exquisite chocolate gems that are as unique as a fine jewel.



Ethel M
CHOCOLATES

